



HOSPITAL STATISTICS
AND ACCOUNTS
LANDSPÍTALI 2015

Compassion – Professionalism – Safety – Progress

Landspítali is the university hospital and main hospital of Iceland and a referral hospital for the whole country.

The hospital is organized as divisions that offer diverse clinical services in outpatient clinics, day patient units, inpatient wards, clinical laboratories and other departments. The hospital's support divisions provide a range of services related to teaching and training of clinical staff, human resources, finance and economics, information technology and operations.

Executive Committee

Páll Matthíasson Chief Executive Officer

Alma Möller Chief Executive of Perioperative Services

Ásta Bjarnadóttir Chief Executive of Human Resources

Benedikt Olgeirsson Chief Executive of Development

Guðlaug Raket Guðjónsdóttir Chief Executive of Emergency, Geriatrics, Rehabilitation Services

Hlíf Steingrimsdóttir Chief Executive of Internal Medicine

Ingólfur Þórisson Chief Executive of Facilities and Operational Services

Jón Hilmar Friðriksson Chief Executive of Women and Children's Services

Lilja Stefánsdóttir Chief Executive of Surgical Services

María Einisdóttir Chief Executive of Mental Health Services

María Heimisdóttir Chief Executive of Finance and Information

Ólafur Baldursson Chief Medical Executive

Óskar Reykdalsson Chief Executive of Diagnostic Medicine Services

Sigríður Gunnarsdóttir Chief Nursing Executive

Hospital Statistics and Financial Accounts

Landspítali, Division of Finance and Information

Eiríksgötu 5, 101 Reykjavík, Iceland

Tel: +354 543 1000

www.landspitali.is

Table of contents

A typical day at Landspítali	2
Key statistics for Landspítali	3
Key figures, clinical divisions	4
Clinical services.....	6
Quality indicators	12
Academic research	13
Human resources	14
Financial accounts	15
Five year statistical overview	17



A typical day at Landspítali (2015)

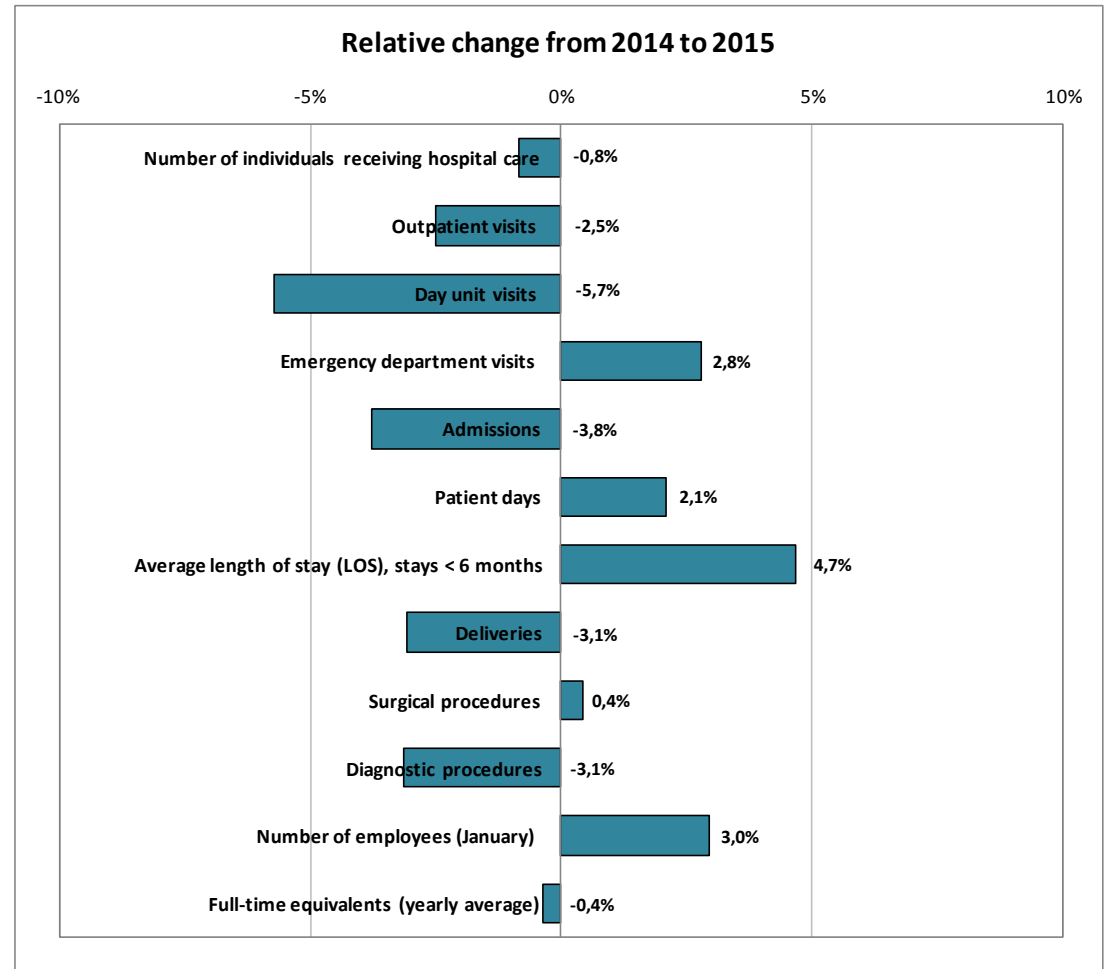
- **660** inpatients
- **1.300** day- and outpatient visits
- **80** new admissions
- **6.300** laboratory tests
- **550** visits to physio- and occupational therapists
- **300** emergency unit visits
- **60** surgical procedures
- **8** babies born
- **130** outpatient mental health visits
- **40** visits at pediatric emergency unit
- **7** cardiac catheterizations
- **25** patients in hemodialysis
- **12** patients in intensive-care units
- **3.700** employees at work
- **3,5** tons of waste, 30% recycled
- Electricity usage equals use in **4.300** homes

Key statistics for Landspítali

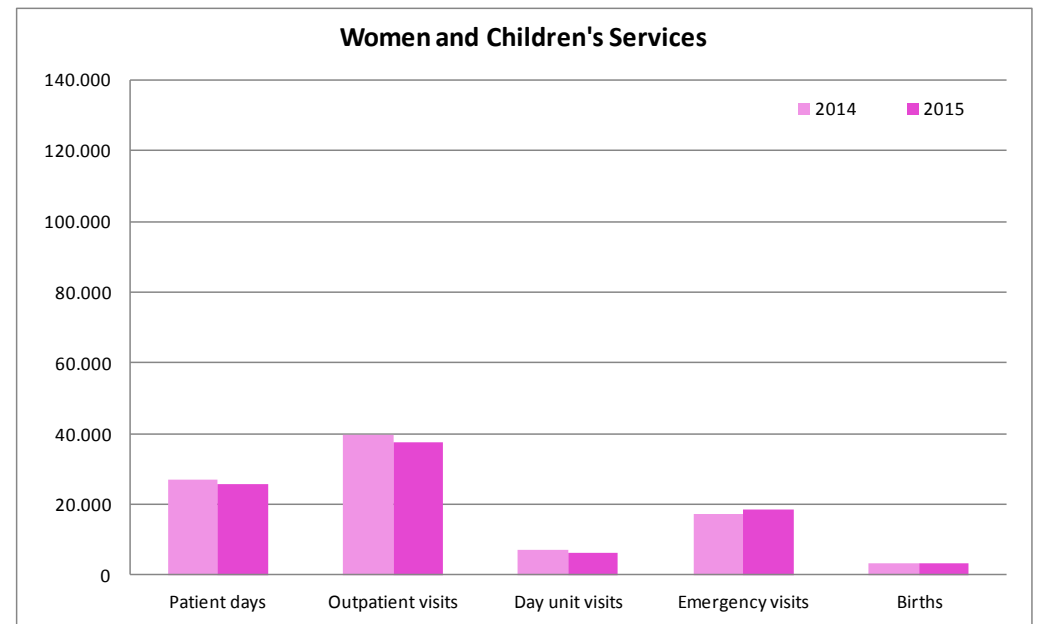
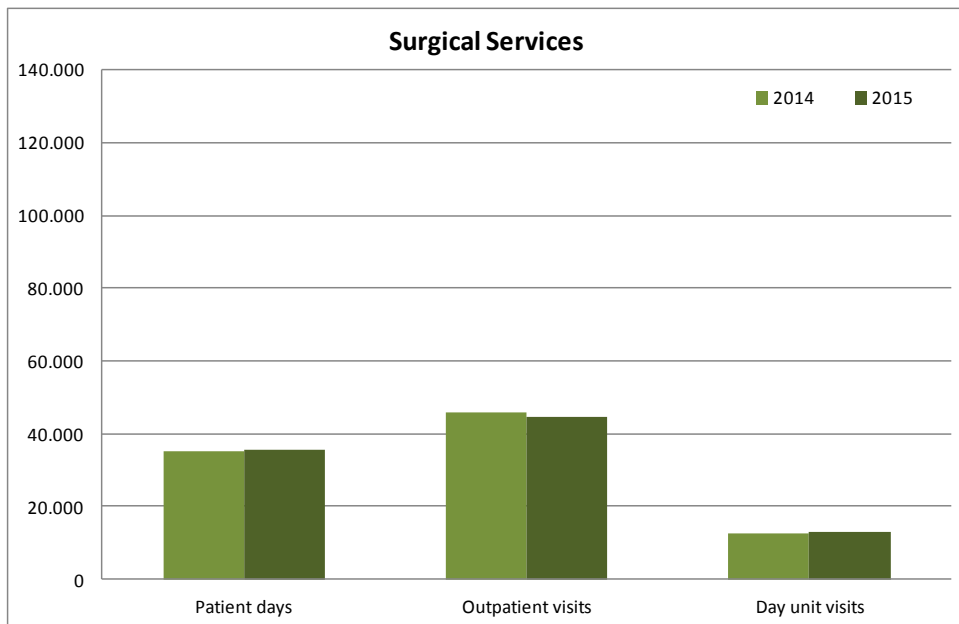
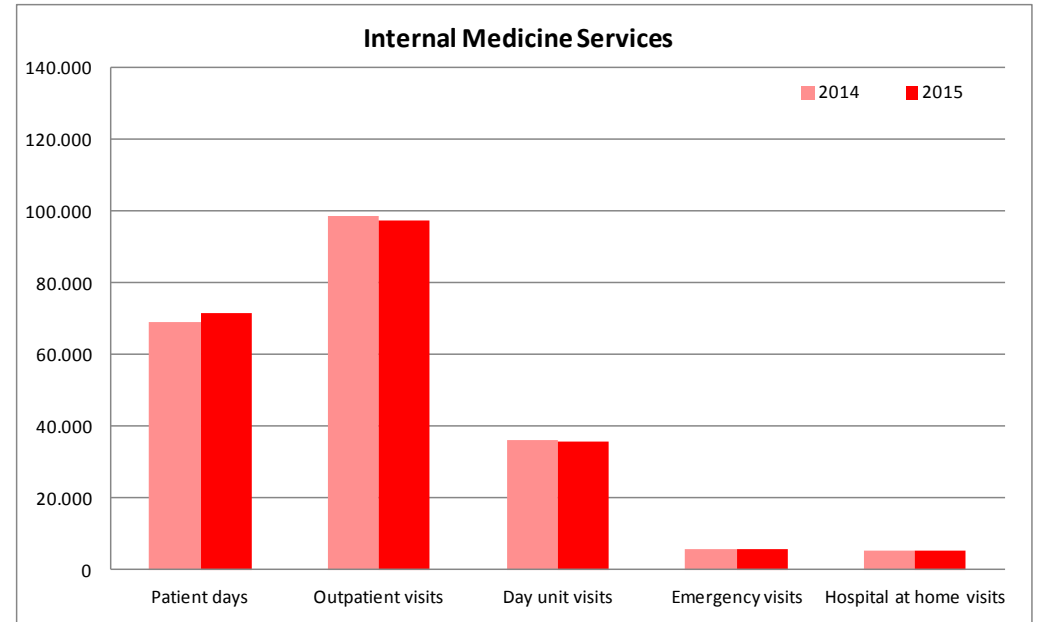
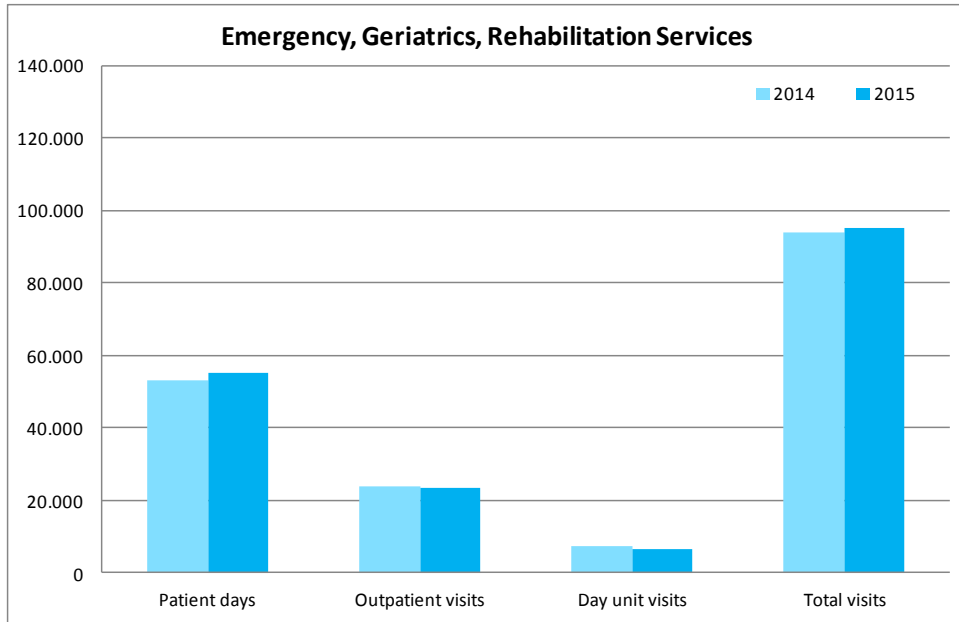
Key statistics for Landspítali

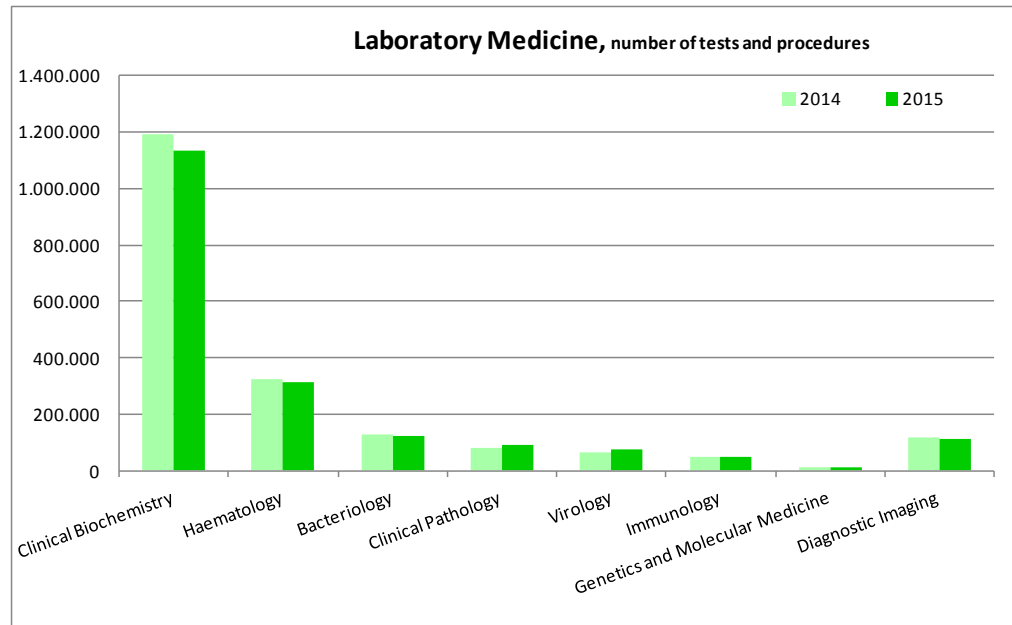
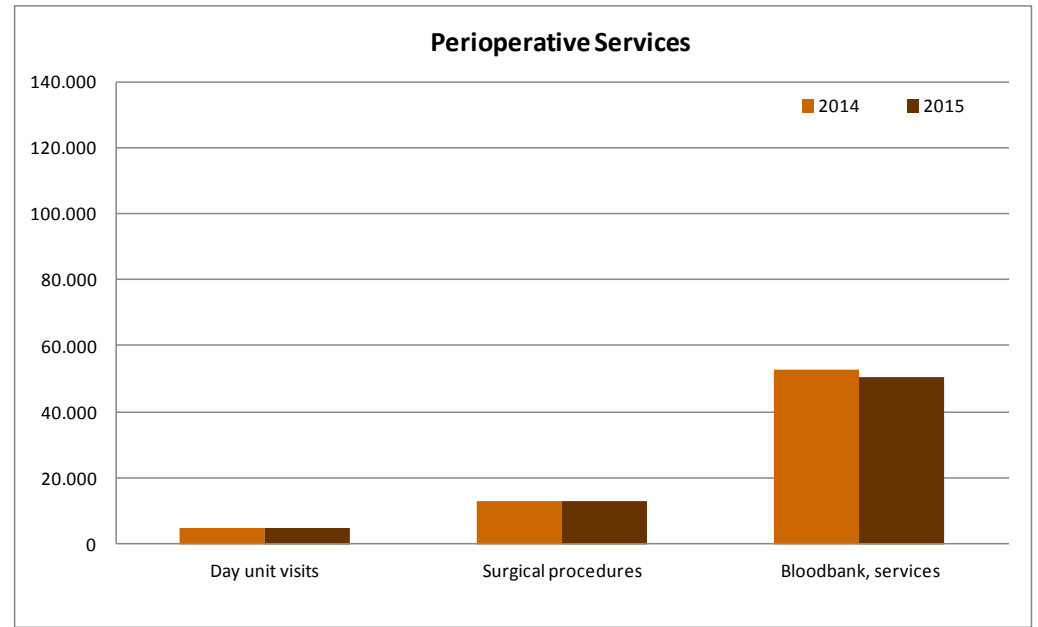
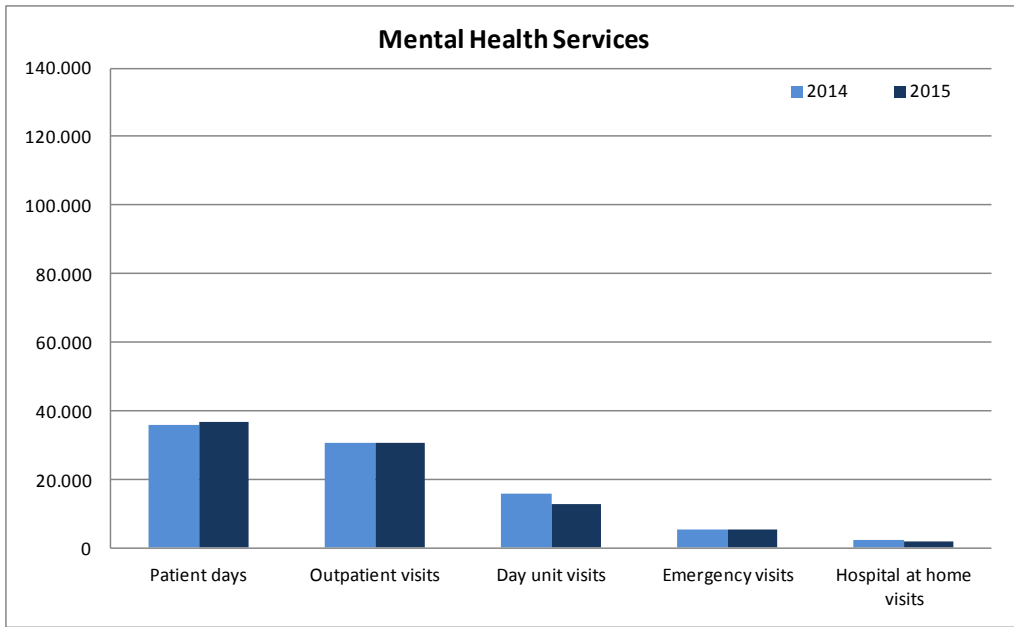
	2015	2014	2015-2014	Increase/ decrease
Number of individuals receiving hospital care ¹⁾	106.861	107.766	-905	-0,8%
Outpatient visits	220.844	226.521	-5.677	-2,5%
Day unit visits	78.867	83.639	-4.772	-5,7%
Emergency department visits	101.094	98.343	2.751	2,8%
Admissions	25.239	26.227	-988	-3,8%
Patient days	224.551	219.981	4.570	2,1%
Average length of stay (LOS), stays < 6 months	7,9	7,5	0,4	4,7%
Deliveries	3.037	3.133	-96	-3,1%
Surgical procedures	13.006	12.951	55	0,4%
Diagnostic procedures	1.906.030	1.967.654	-61.624	-3,1%
Number of employees (January)	5.019	4.875	144	3,0%
Full-time equivalents (yearly average)	3.739	3.752	-13	-0,4%

¹⁾Each individual may have received care on more than one occasion, but is counted here only once.



Key figures, clinical divisions





Clinical services

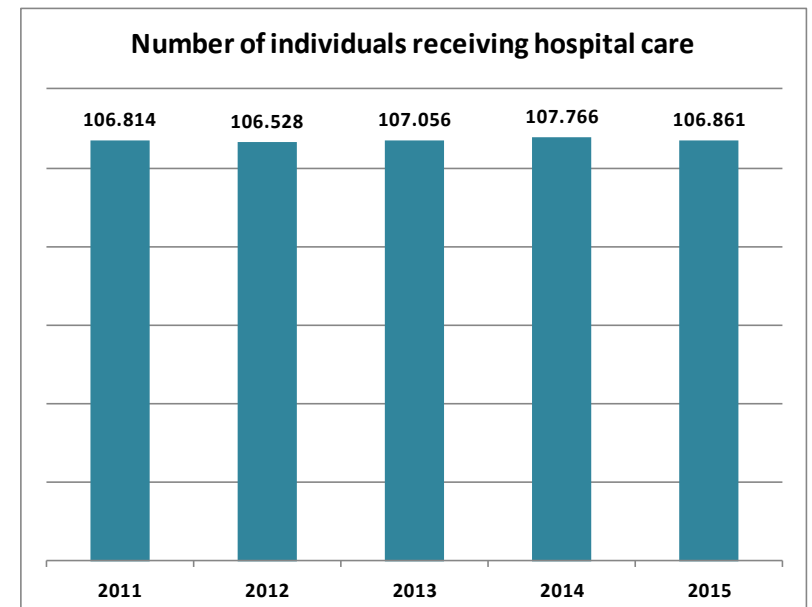
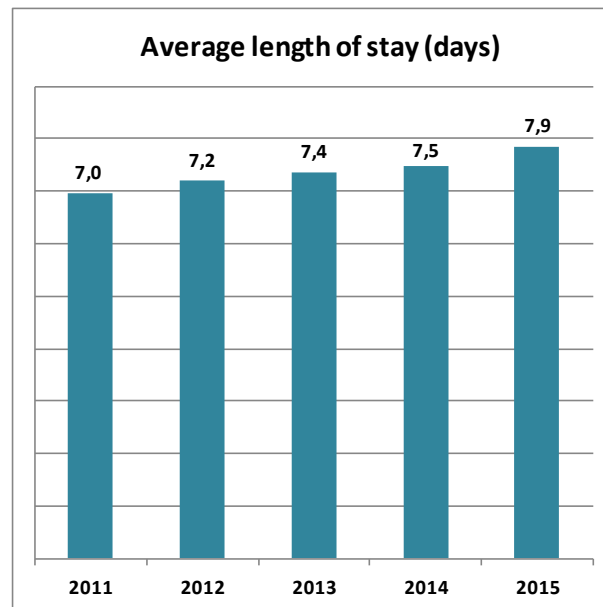
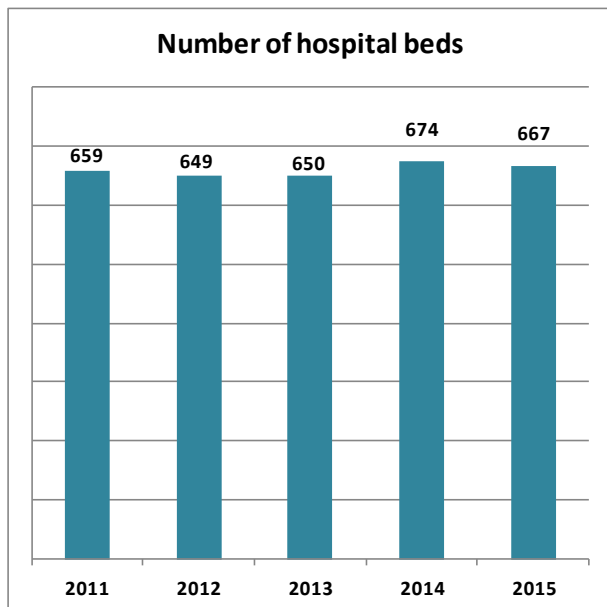
Inpatient Services

	Admissions		Increase/ decrease	Patient days		Increase/ decrease	Average length of stay		Increase/ decrease
	2015	2014		2015	2014		2015	2014	
Women and Children's Services	7.210	7.547	-4,5%	25.669	27.050	-5,1%	3,5	3,6	-2,2%
Mental Health Services	2.132	2.083	2,4%	36.580	35.762	2,3%	13,5	13,1	2,9%
Internal Medicine Services	8.228	8.537	-3,6%	71.492	68.972	3,7%	8,8	8,1	8,1%
Surgical Services	6.151	6.485	-5,2%	35.517	35.043	1,4%	5,6	5,3	5,1%
Emergency, geriatrics, rehabilitation services	1.518	1.575	-3,6%	55.293	53.154	4,0%	31,2	30,1	3,6%
Total	25.239	26.227	-3,8%	224.551	219.981	2,1%	7,9	7,5	4,8%

Outpatient Services

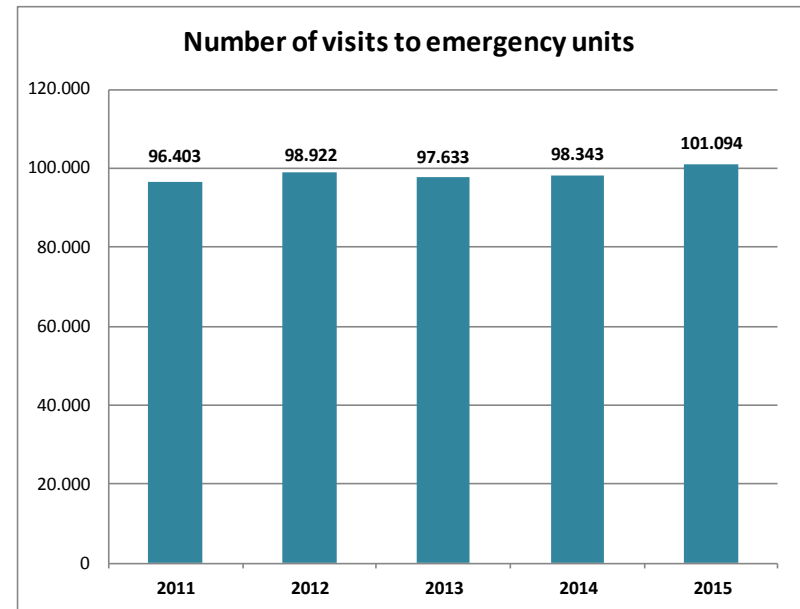
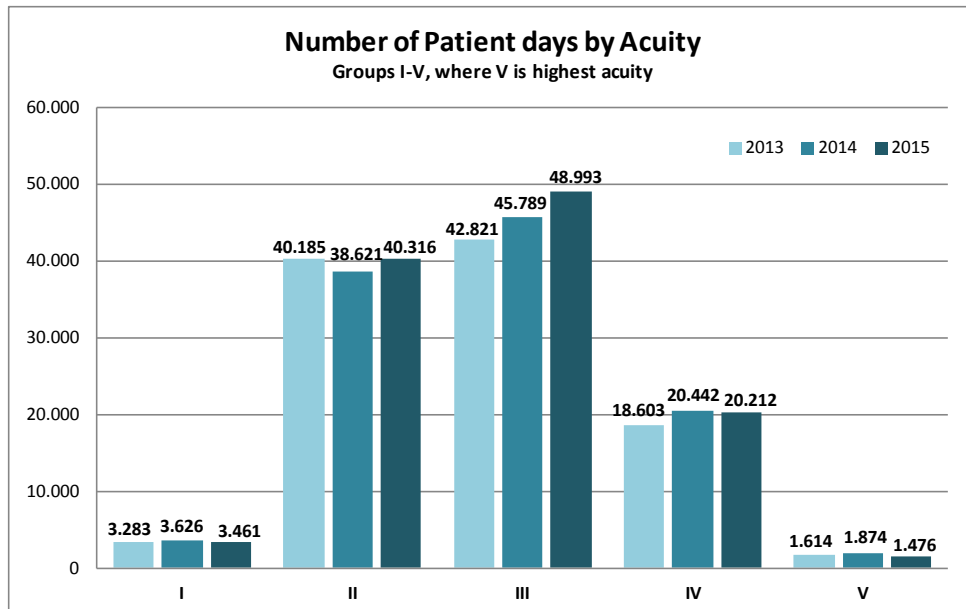
	Outpatient visits		Increase/ decrease	Day visits		Increase/ decrease
	2015	2014		2015	2014	
Women and Children's Services	37.578	39.580	-5,1%	6.070	7.072	-14,2%
Mental Health Services	30.791	30.438	1,2%	12.697	15.640	-18,8%
Internal Medicine Services ¹⁾	97.298	98.450	-1,2%	35.454	36.169	-2,0%
Surgical Services	44.565	45.842	-2,8%	13.165	12.679	3,8%
Perioperative Services ¹⁾	-	-	-	4.831	4.943	-2,3%
Emergency, geriatrics, rehabilitation services	9.294	9.899	-6,1%	6.754	7.299	-7,5%
Laboratory Medicine Services (Genetics and Molecular Medicine)	756	655	15,4%	0	0	-
Employee Health Care	2.125	1.657	28,2%	0	0	-
Total	222.407	226.521	-1,8%	74.437	79.084	-5,9%

1) Gastroenterology belongs to Internal Medicine, however the gastroscopic day service belongs to Perioperative Services. It is therefore counted in both, but only once in the total number.



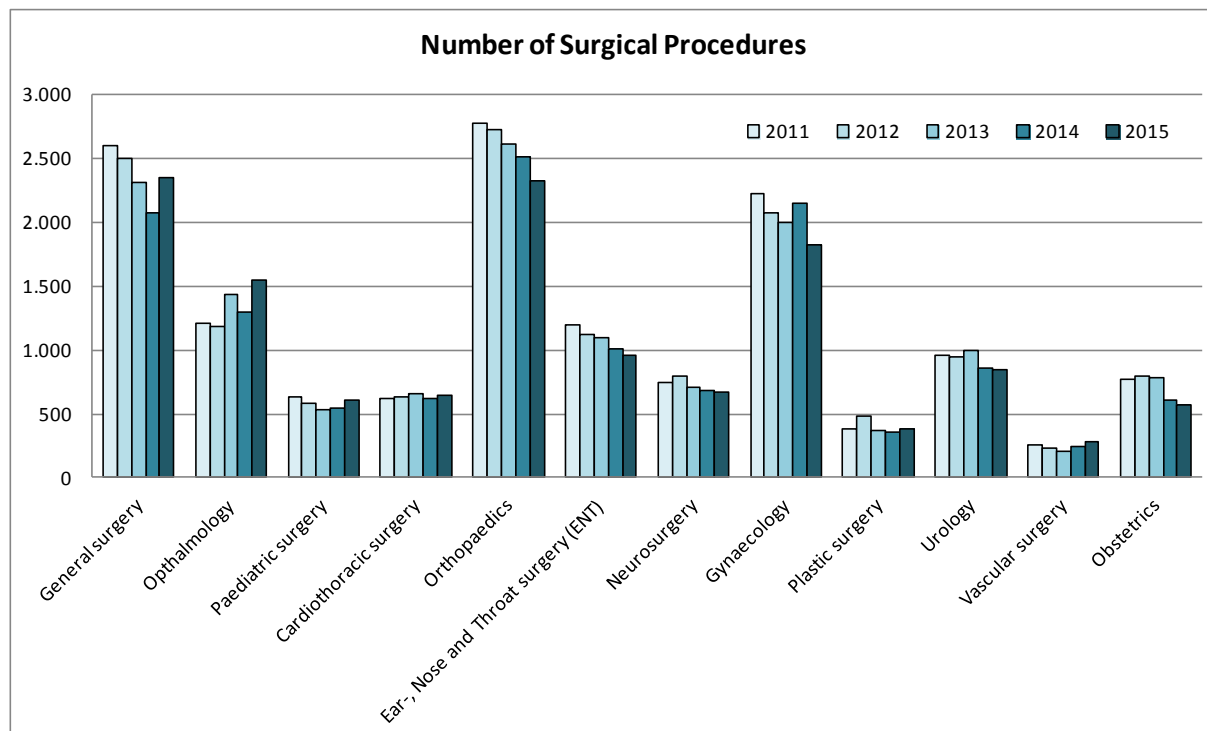
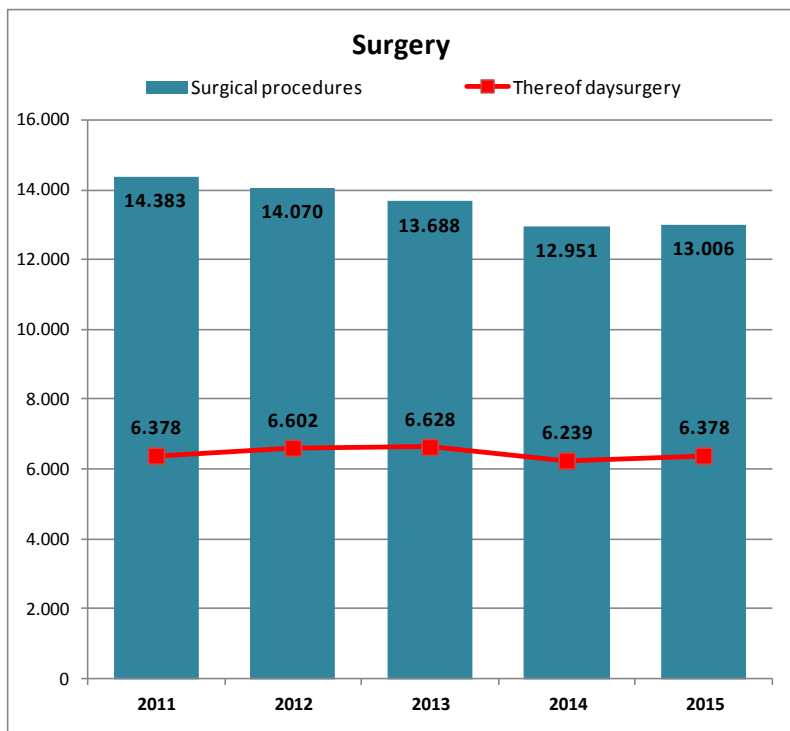
Emergency Visits

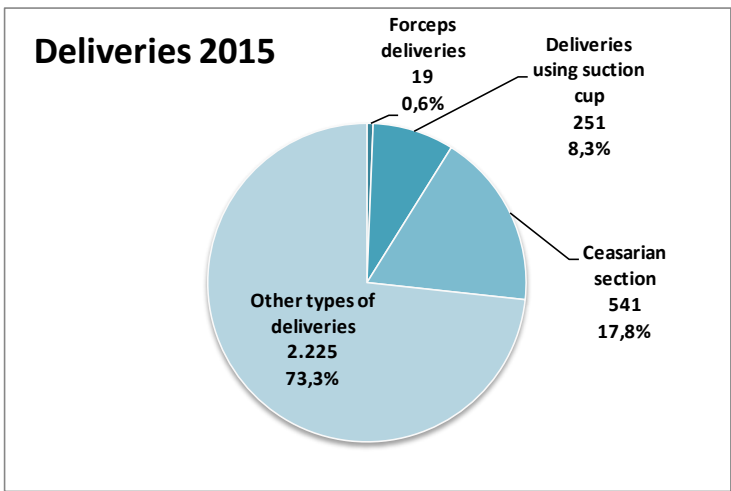
	Number of visits			Average number of visits per day		Admissions		Percentage admitted	
	2015	2014	Changes	2015	2014	2015	2014	2015	2014
	Women's Services	3.990	4.105	-115	11	11	694	659	17,4%
Children's Services	14.502	13.259	1.243	40	36	844	844	5,8%	6,4%
Mental Health Services	5.355	5.255	100	15	14	975	952	18,2%	18,1%
Cardiac Emergency Unit	5.552	5.494	58	25	25	1.210	1.260	21,8%	22,9%
Emergency Unit in Fossvogur, thereof;	71.695	70.230	1.465	196	192	8.300	8.441	11,6%	12,0%
<i>high priority (G2)</i>	31.104	29.209	1.895	85	80	7.611	7.589	24,5%	26,0%
<i>low priority (G3)</i>	40.591	41.021	-430	111	112	689	852	1,7%	2,1%
Total emergency visits	101.094	98.343	2.751	286	279	12.023	12.156	11,9%	12,4%



Surgical Procedures

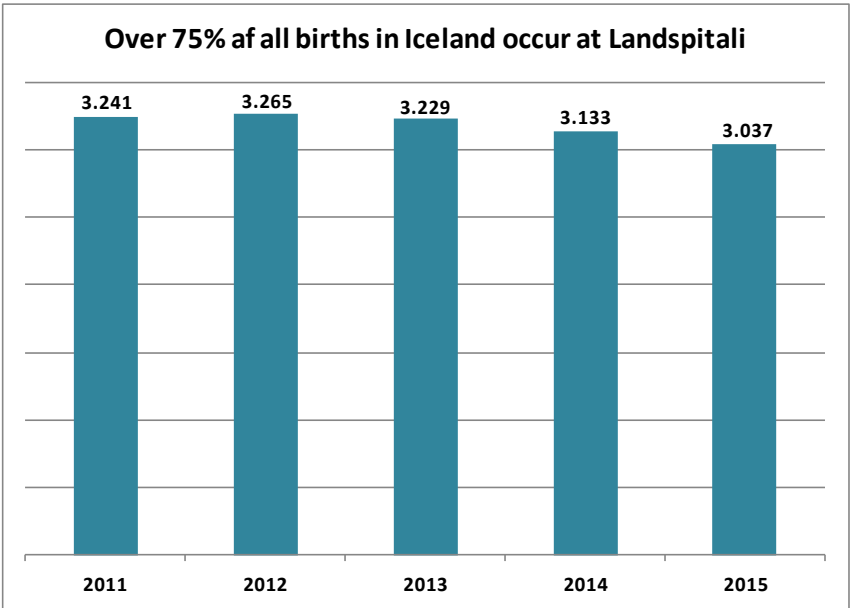
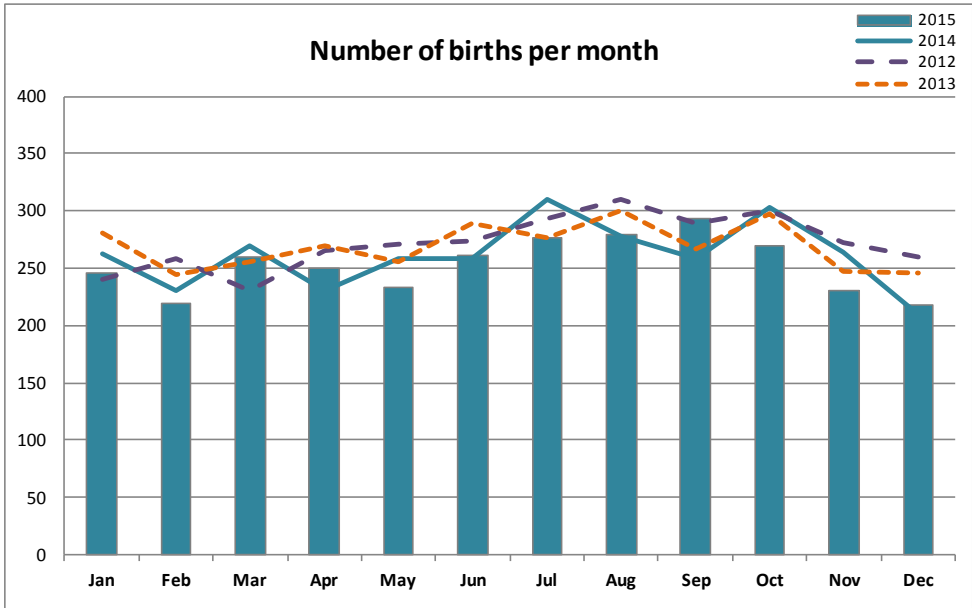
	Total		Increase/ decrease	Acute procedures		Day surgery	
	2015	2014		2015	Proportion	2015	Proportion
General surgery	2.347	2.075	13,1%	859	36,6%	802	34,2%
Ophthalmology	1.547	1.300	19,0%	124	8,0%	1.402	90,6%
Paediatric surgery	605	547	10,6%	267	44,1%	298	49,3%
Cardiothoracic surgery	651	618	5,3%	272	41,8%	40	6,1%
Orthopaedics	2.321	2.508	-7,5%	1.236	53,3%	951	41,0%
Ear-, Nose and Throat surgery (ENT)	956	1.003	-4,7%	136	14,2%	691	72,3%
Neurosurgery	673	684	-1,6%	153	22,7%	344	51,1%
Gynaecology	1.817	2.153	-15,6%	521	28,7%	1.127	62,0%
Plastic surgery	384	354	8,5%	82	21,4%	139	36,2%
Urology	846	863	-2,0%	124	14,7%	484	57,2%
Vascular surgery	287	242	18,6%	81	28,2%	94	32,8%
Obstetrics	572	604	-5,3%	364	63,6%	6	1,0%
Total	13.006	12.951	0,4%	4.219	32,4%	5.060	38,9%
Intraocular injections for treatment of age-related macular degeneration	4.718	3.874	21,8%	0	0,0%	4.718	100,0%





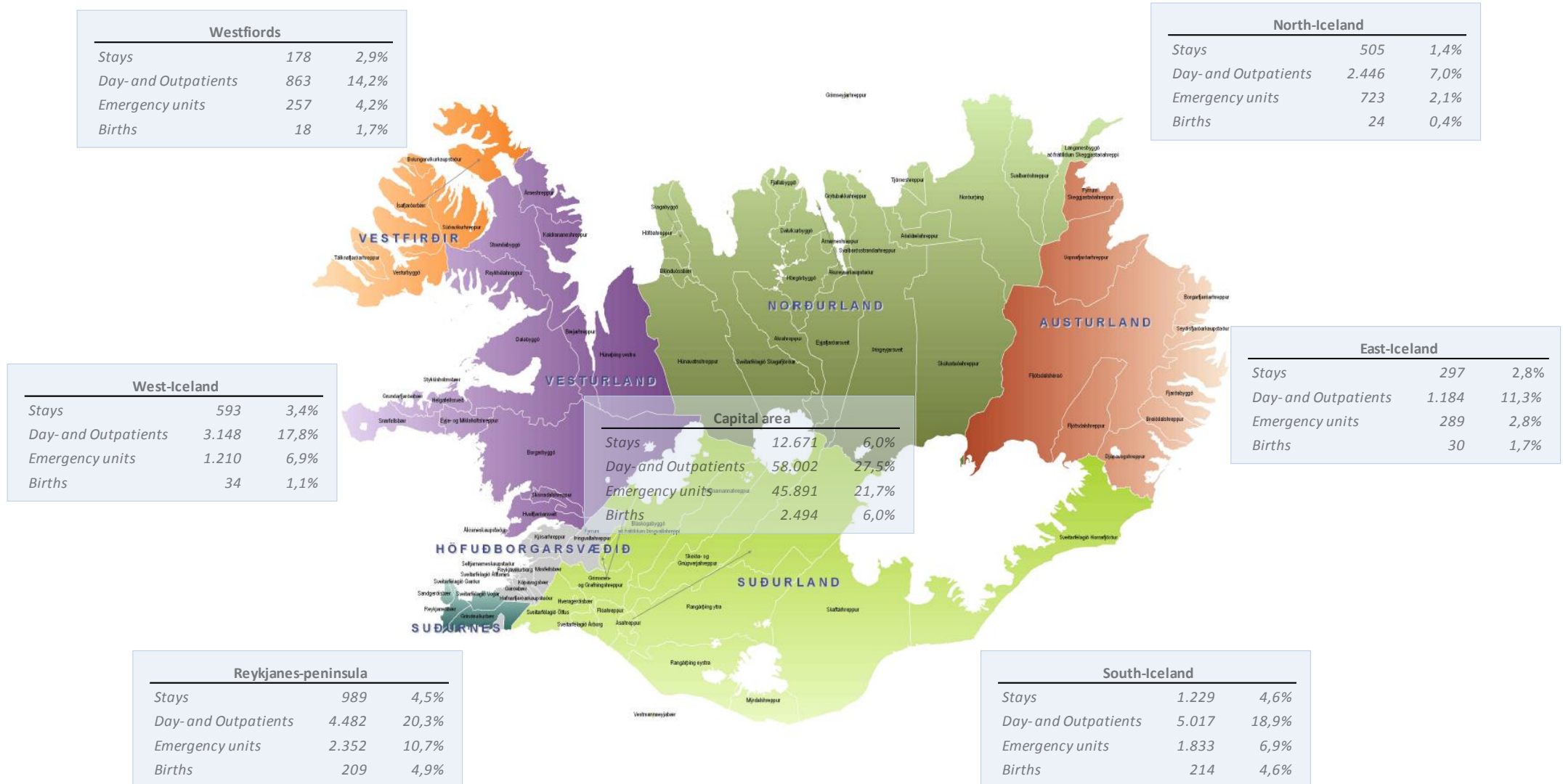
Deliveries

	2015	2014	Increase/decrease
Number of births	3,037	3,133	-3,1%
proportion of all births in Iceland	75,4%	73,0%	3,3%
Number of babies	3,105	3,198	-2,9%
Number of twins	66	65	1,5%
Number of triplets	1	0	-
Multiple births	2,2%	2,1%	-
Caesarean section rate	17,8%	17,0%	-



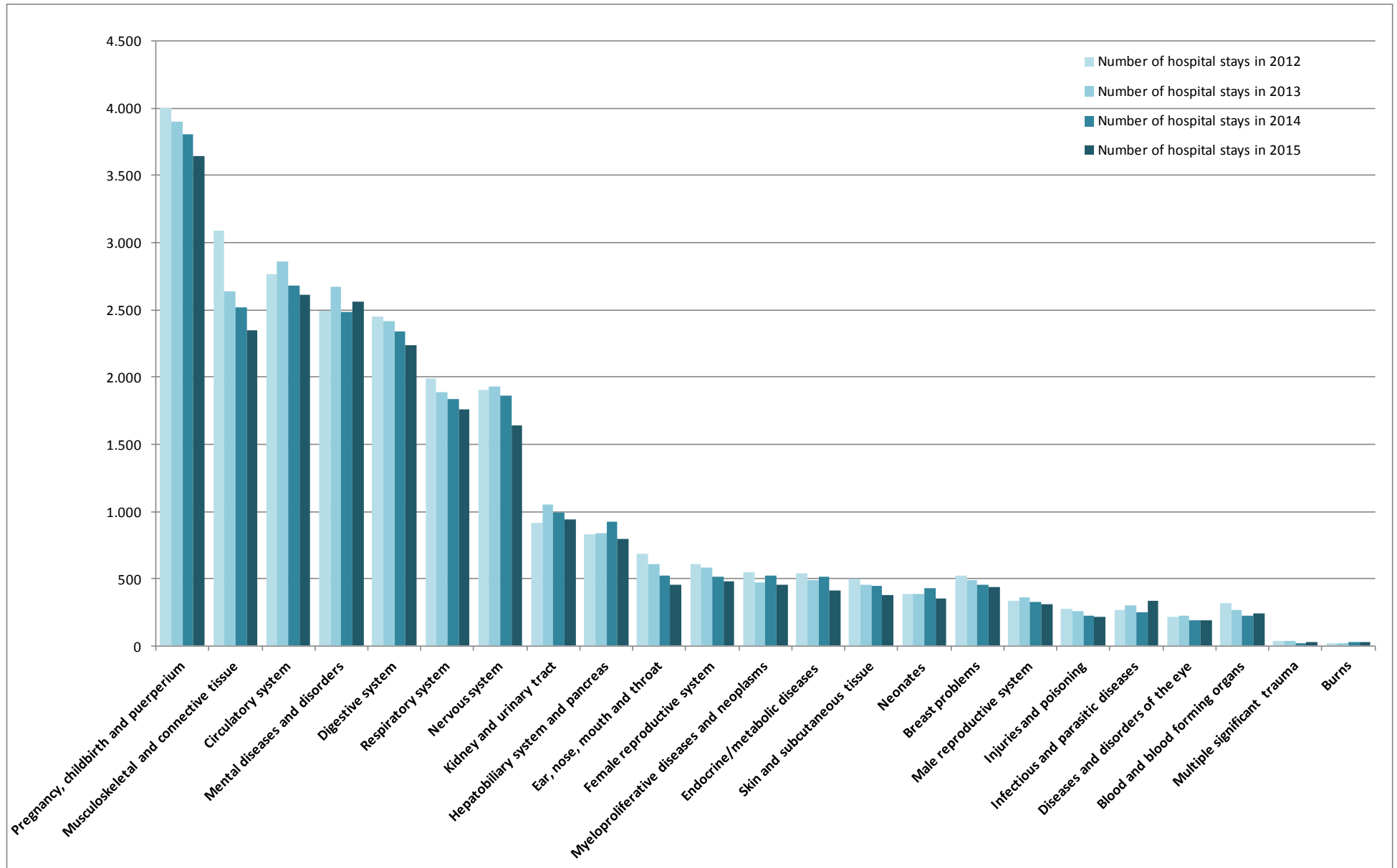
Our patients come from all parts of Iceland

Patients seeking health care services at Landspítali come from all health districts in the country. The first column shows the number of patients, the second column shows the percentage of inhabitants in each area that had at least one contact with Landspítali in 2014. Percentage of births is calculated from the number of women at the age of 18 to 45 living in the area.

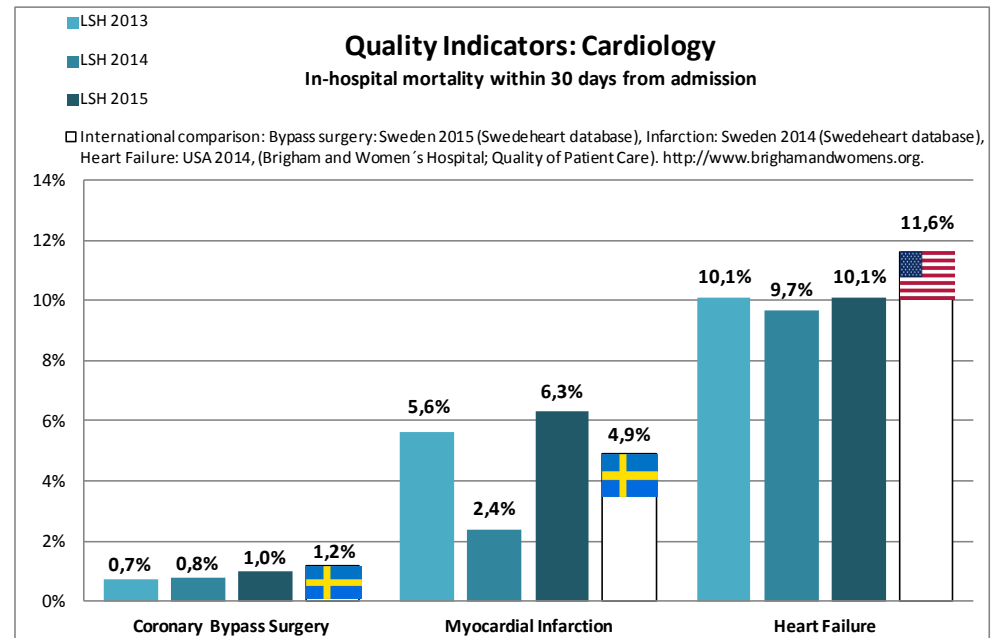
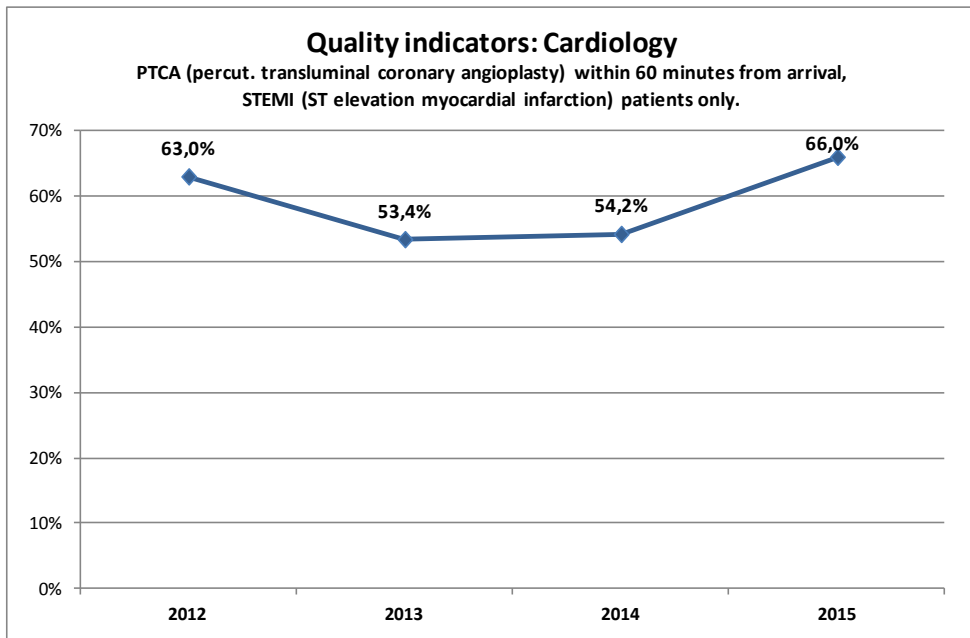
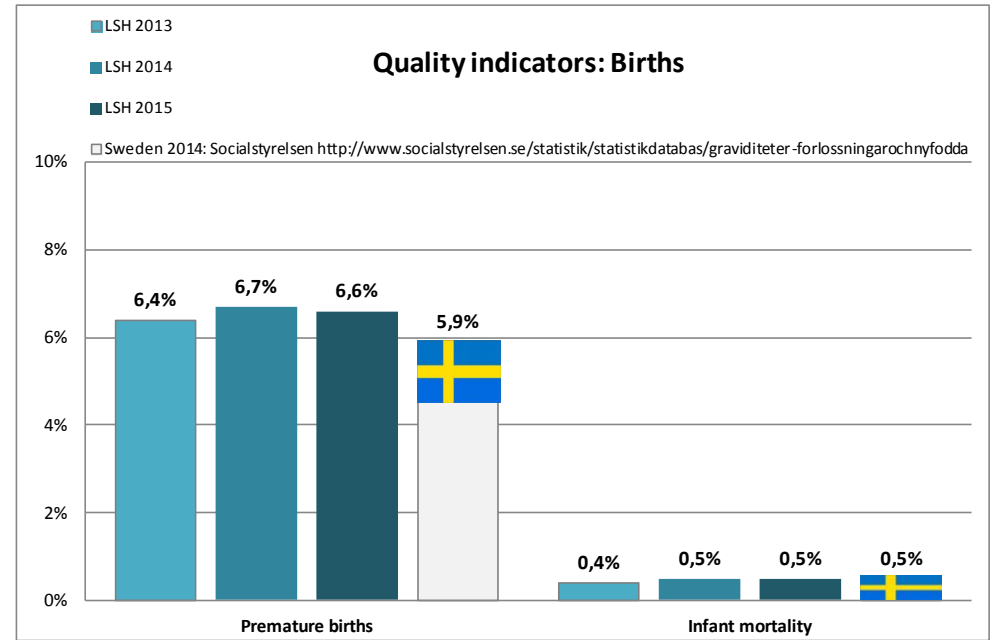
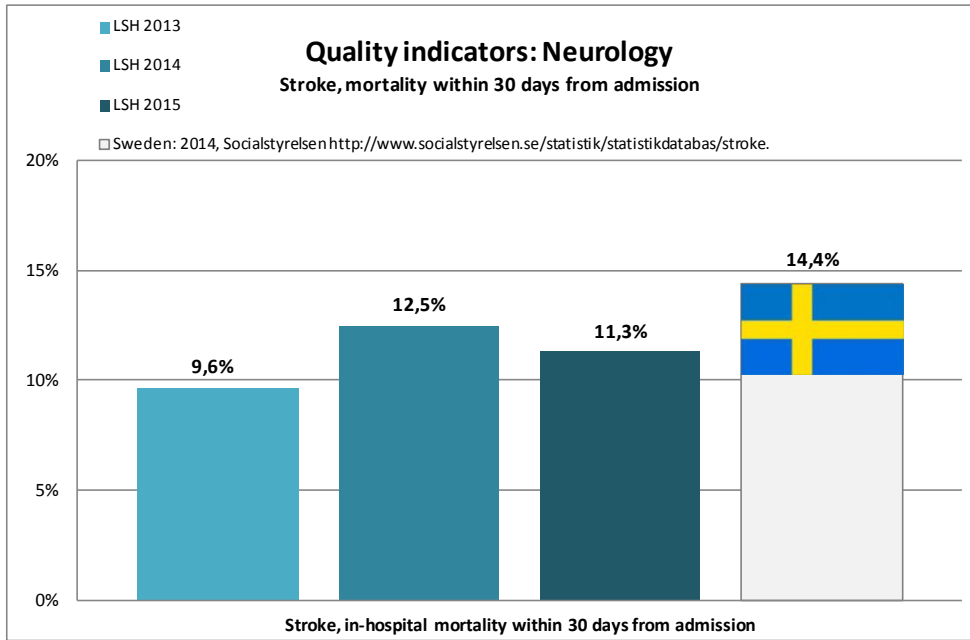


Inpatients; Main Diagnostic Categories (MDC) of the Diagnosis Related Groups (DRG) system

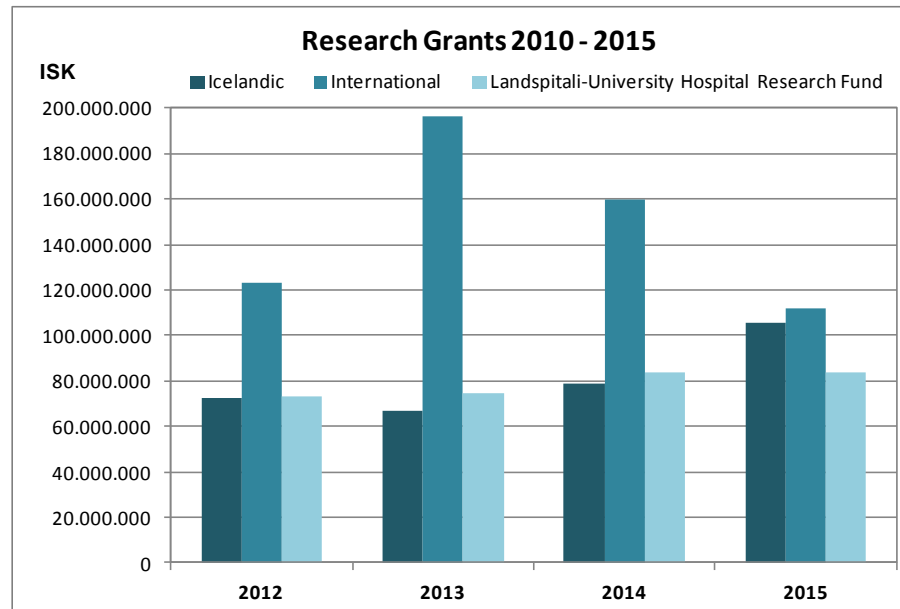
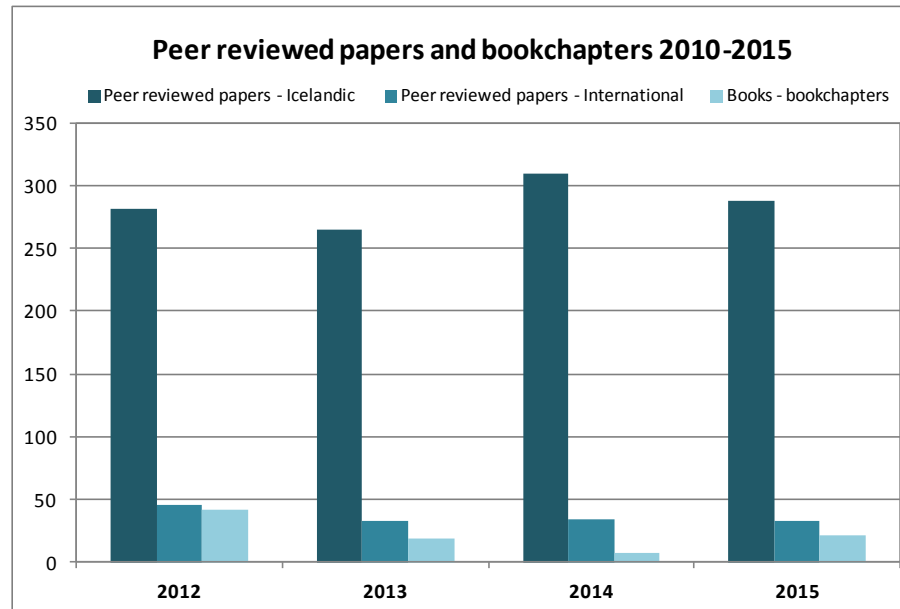
Number of inpatient stays 2012-2015



Quality indicators, examples



Academic research in university hospitals - foundation for quality care



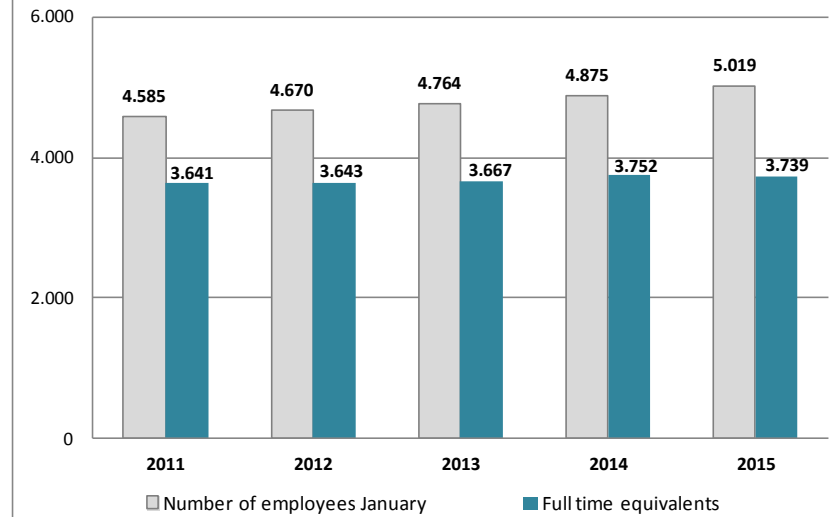
Human resources

Full-time equivalents (FTEs)

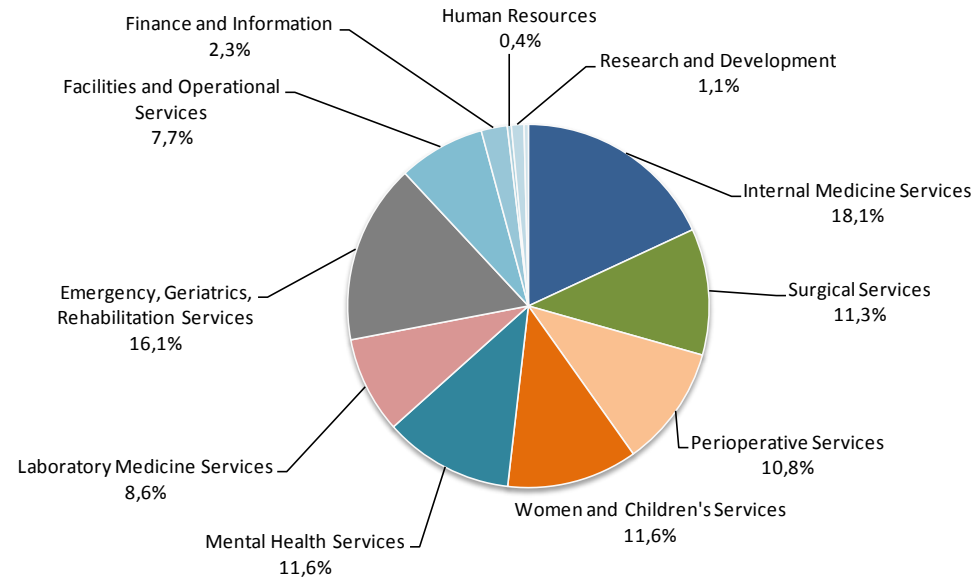
	Full-time equivalents (FTEs)	
	2015	2014
Internal Medicine Services,	676,1	667,9
Surgical Services	422,3	429,5
Perioperative Services	404,0	405,6
Women and Children's Services ¹⁾	435,3	438,8
Mental Health Services	432,0	436,7
Laboratory Medicine Services	322,2	342,9
Emergency, Geriatrics, Rehabilitation Services	601,0	589,2
Facilities and Operational Services	289,4	281,2
Finance and Information	86,7	89,6
Human Resources	13,6	12,8
Office of the Chief Medical Executive and the Office of the Chief Nursing Executive	41,7	43,0
Office of the Chief Executive	14,5	14,2
Total	3.738,6	3.751,6

1) Includes IT department

Number of FTEs and employees



Fulltime equivalents (FTEs) divisional partition 2015

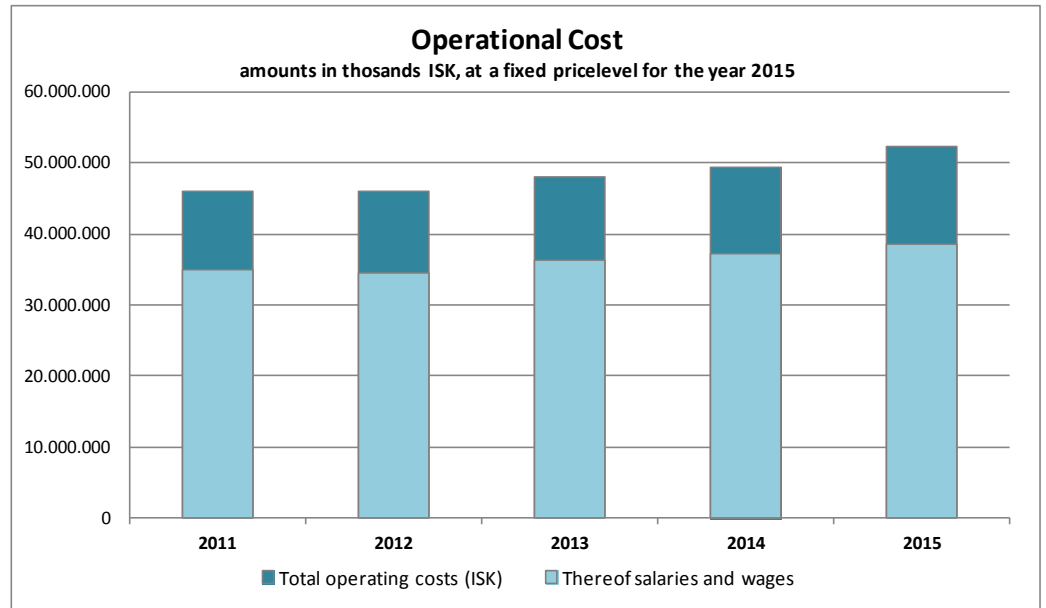


Financial accounts

Financial Accounts

	2015	2014	2013
Revenues			
Allotment in State Budget	48.071,2	43.553,9	39.193,9
Revenues from patient care and other operations	6.563,0	4.776,5	4.521,8
Income from Icelandic Health Insurance for S-labelled medications ¹⁾	3.359,6	4.857,4	4.840,2
Total Revenues	57.993,9	53.187,8	48.555,9
Expenses			
Wages and salaries	38.644,8	34.719,7	31.857,8
Other operating expenses	13.639,4	12.166,8	11.729,9
"S-labelled" medications ¹⁾	3.291,1	4.758,2	4.746,7
Capital investments, maintenance and equipment	2.413,6	2.317,8	1.736,6
Total Expenses	57.988,9	53.962,5	50.071,0
Revenues above Expenses			
Revenues above Expenses/(Expenses above Revenues)	4,9	(774,7)	(1.515,2)
Other Revenues			
Financial revenues and (expenses)	50,7	25,3	31,1
Total Revenues above Expenses/(Expenses above Revenues)	55,7	(749,4)	(1.484,0)

Amounts in ISK millions



¹⁾ "S-labelled" medications are those intended only for hospital use and are specially provided for in the State Budget.

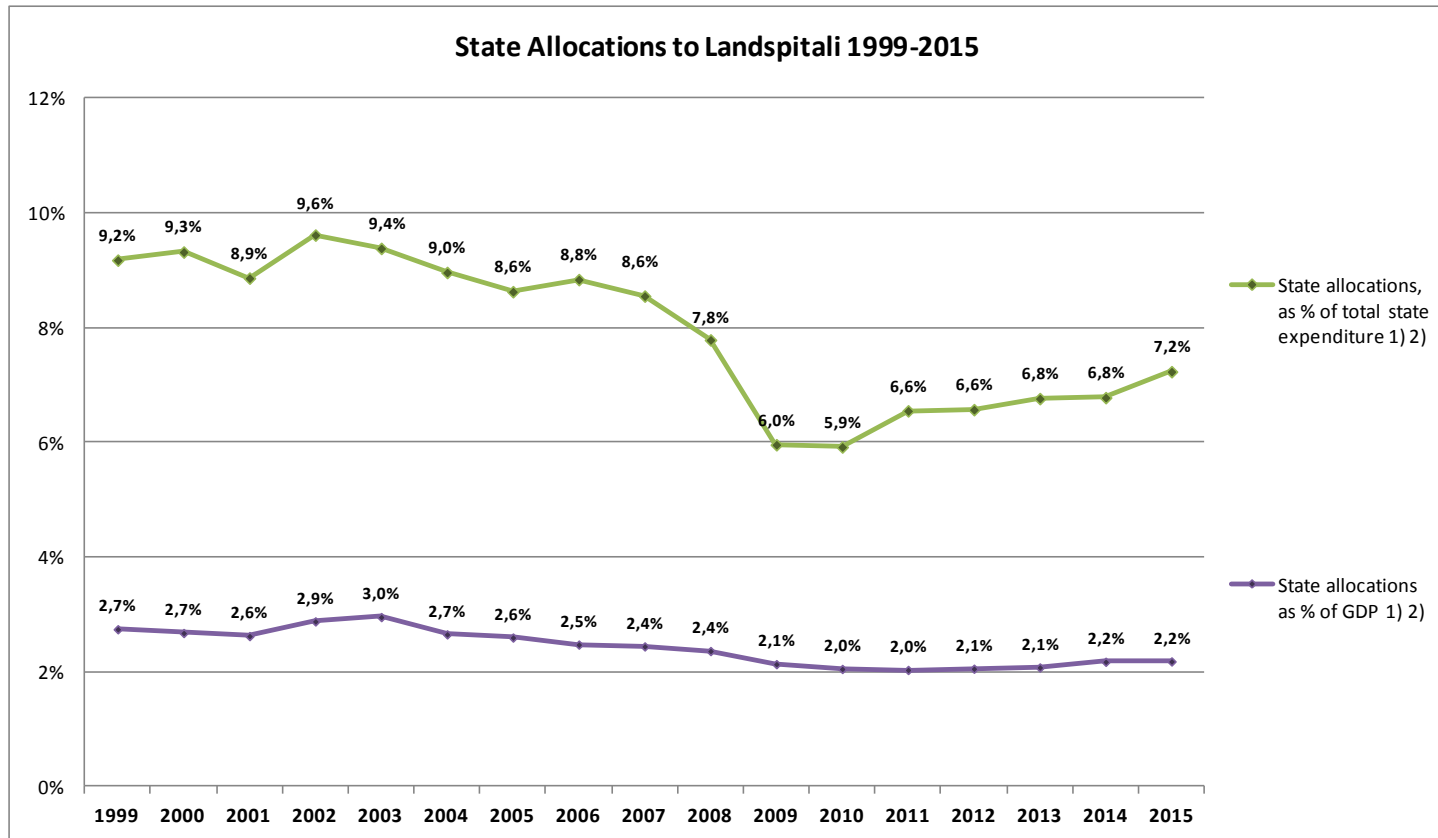
Accounts; Divisonal partition

	Total Revenues and Expenses				Revenues from patient services and other operations		Wages & Salaries		Other Operating Expenses	
	2015	Budget	Absolute Difference	Relative Difference	2015	Budget	2015	Budget	2015	Budget
	Office of the Chief Executive	326,5	333,9	7,3	2,2%	1,5	0,0	228,1	235,7	99,9
Finance and Information	198,4	199,1	0,7	0,4%	6,4	3,0	160,0	156,7	44,9	45,4
Facilities and Operational Services	909,7	936,3	26,5	2,8%	5,9	4,2	765,9	785,0	149,7	155,5
Research and Development	4.244,1	4.263,7	19,6	0,5%	781,9	741,1	1.989,4	1.978,6	3.036,6	3.026,2
Emergency, Geriatrics, Rehabilitation	572,6	581,7	9,0	1,6%	62,7	68,6	495,1	513,6	140,3	136,7
Internal Medicine Services	6.127,1	5.816,4	(310,7)	-5,3%	5.394,6	5.072,6	5.957,0	5.711,0	5.564,7	5.178,1
Surgical Services	8.863,3	8.783,5	(79,8)	-0,9%	706,9	592,5	7.431,7	7.249,9	2.138,5	2.126,0
Women and Children's Services	4.979,0	4.950,2	(28,8)	-0,6%	248,1	239,5	4.612,8	4.592,2	614,3	597,4
Mental Health Services	5.907,3	5.833,1	(74,2)	-1,3%	172,6	141,1	4.895,0	4.866,7	1.184,8	1.107,5
Perioperative Services	4.114,0	4.092,3	(21,7)	-0,5%	126,7	118,0	3.983,0	3.952,5	257,6	257,8
Laboratory Medicine Services	6.649,9	6.681,5	31,6	0,5%	388,6	364,7	4.510,8	4.422,9	2.527,8	2.623,3
Other	3.649,1	3.766,2	117,1	3,1%	1.287,6	1.326,8	3.686,4	3.738,6	1.250,3	1.354,4
Internal transactions	-819,9	-586,4	233,4	-	1.395,5	1.158,4	-70,5	-13,5	646,1	585,5
Total	45.721,2	45.651,3	-69,9	-0,2%	10.579,0	9.830,6	38.644,8	38.189,9	17.655,4	17.292,0

Amounts in ISK millions

State allocations to Landspítali as a percentage of total health care expenditure have decreased since 1999

Same goes for state allocations as a percentage of total state expenditure and percentage of GDP (Gross Domestic Product)



1) According to State Budget

2) In the State Budget 2009 allocations for S-labelled medications were transferred from Landspítali to the Icelandic Health Insurance Agency. (S-labelled medications are those intended solely for use in hospitals.)

Five year statistical overview

Five years statistical overview ¹⁾

Fem års statistisk oversigt ¹⁾

	2015	2014	2013	2012	2011	
Population development in the capital area ²⁾						Udvikling af befolkningen i hovedstadsområdet ²⁾
Number of inhabitants	211.282	208.752	205.675	203.594	202.341	Befolkning
Annual increase	1,21%	1,50%	1,02%	0,62%	0,71%	Årlig vækst
Number of inhabitants age 70 years and older	18.582	18.021	17.556	17.082	16.770	Antal beboere 70 år og ældre
Proportion of inhabitants age 70 years and older	8,79%	8,63%	8,54%	8,39%	8,29%	Procent beboere 70 år og ældre
Number of inhabitants age 80 years and older	7.584	7.425	7.320	7.148	6.936	Antal beboere 80 år og ældre
Proportion of inhabitants age 80 years and older	3,59%	3,56%	3,56%	3,51%	3,43%	Procent beboere 80 år og ældre
Key operational statistics ³⁾						Nøgletal for hospitalet ³⁾
Total operational costs (ISK) ⁴⁾	52.281.310	49.386.049	48.077.722	46.003.894	45.951.421	Samlede udgifter ⁴⁾
Salaries	74%	75%	75%	75%	76%	Udgifter til personale
Medication costs ⁴⁾	2.805.007	1.673.947	1.602.726	1.471.921	1.469.233	Udgifter til medicin ⁴⁾
Number of individuals receiving hospital care	106.861	107.766	107.056	106.528	106.814	Antal personer som fik tjeneste fra hospitalet
Emergency units, visits	101.094	98.343	97.633	98.922	96.403	Skadestue, antal besøg
Outpatient units visits, thereof	222.407	226.521	236.833	235.403	238.203	Ambulante besøg, deraf
<i>dayward units, visits ¹⁾</i>	78.867	83.639	77.811	77.922	79.505	<i>dagpatienter, antal besøg ¹⁾</i>
Patient days ¹⁾	224.551	219.981	215.357	213.515	208.563	Antal sengedage ¹⁾
Admissions ¹⁾	25.239	26.227	26.753	27.317	27.534	Antal indlæggelser ¹⁾
Average length of stay, thereof	8,9	8,3	8,6	8,4	7,6	Gennemsnitlig liggetid, deraf
<i>stays < 6 months</i>	7,9	7,5	7,3	7,2	7,0	<i>liggetid < 6 måneder</i>
DRG casemix index, inpatients ⁵⁾	1,15	1,12	1,14	1,12	1,13	Gennemsnitlig DRG-vægt af indlagte patienter ⁵⁾
Total DRG units ⁵⁾	42.933	43.118	44.728	44.406	44.911	Samlede DRG enheder ⁵⁾
Hospital beds	667	674	650	649	659	Antal senge
Surgical procedures ¹⁾ , thereof	13.006	12.951	13.688	14.070	14.383	Kirurgiske behandlinger ¹⁾ , deraf
<i>same day surgery</i>	6.378	6.239	6.628	6.602	6.378	<i>dagskirurgi</i>
Number of births	3.037	3.133	3.229	3.265	3.241	Antal fødsler
Diagnostic services, thereof	1.906.030	1.967.654	1.921.338	1.832.182	1.822.438	Diagnostiske undersøgelser, deraf
<i>Diagnostic imaging</i>	113.072	118.568	116.600	123.901	124.140	<i>antal radiologiske undersøgelser</i>
Staffing, full time equivalents	3.739	3.752	3.667	3.643	3.641	Antal ansatte/årsværk
Number of employees	5.019	4.875	4.764	4.670	4.585	Antal ansatte personer
Staff turnover	11,7%	10,4%	11,1%	11,1%	10,8%	Personale omsætning

1) Figures in 2015 are affected by strikes. Tallene i 2015 er påvirket af strejker.

2) Data from Statistics Iceland. Data fra Islands Statistik.

3) Data from hospital annual reports. Data fra hospitalets årsberetning.

4) Numbers in thousands (ISK), at fixed price level for the year 2015. Tal i tusind (ISK), ved fast pris for året 2015.

5) Total DRG units based on 2015 DRG weights. Without newborns, rehabilitation and patient hotel. Samlede DRG enheder baseres på 2015 DRG vægt. Uden nyfødte, rehabilitering og patienthotel.

	2015	2014	2013	2012	2011	
Average exchange rate USD to ISK	131,85	116,75	122,23	125,05	116,07	Gennemsnitlig valutakurs USD til ISK
Average exchange rate EUR to ISK	146,30	154,86	162,38	160,73	161,42	Gennemsnitlig valutakurs EUR til ISK

Updated/Opdateret May / maj 2016