



Landspítali

Hospital Statistics and Accounts 2014



Compassion – Professionalism – Safety – Progress

Landspítali is the university hospital and main hospital of Iceland and a referral hospital for the whole country.

The hospital is organized as divisions that offer diverse clinical services in outpatient clinics, day patient units, inpatient wards, clinical laboratories and other departments. The hospital's support divisions provide a range of services related to teaching and training of clinical staff, human resources, finance and economics, information technology and operations.

Executive Committee

Páll Matthíasson Chief Executive Officer
Benedikt Olgeirsson Deputy Chief Executive Officer
Alma Möller Chief Executive of Perioperative Services
Guðlaug Raket Guðjónsdóttir Chief Executive of Emergency, Geriatrics, Rehabilitation Services
Hlíf Steingrimsdóttir Chief Executive of Internal Medicine
Ingólfur Þórisson Chief Executive of Facilities and Operational Services
Jón Hilmar Friðriksson Chief Executive of Womens and Childrens Services
Lilja Stefánsdóttir Chief Executive of Surgical Services
María Einisdóttir Chief Executive of Mental Health Services
María Heimisdóttir Chief Executive of Finance and Information
Ólafur Baldursson Chief Medical Executive
Óskar Reykdalsson Chief Executive of Diagnostic Medicine Services
Sigríður Gunnarsdóttir Chief Nursing Executive

Hospital Statistics and Financial Accounts

Landspítali, Division of Finance and Information
Eiríksgötu 5, 101 Reykjavík, Iceland.
Tel: +354 543 1000,

www.landspitali.is

Managing Editor: Elísabet Guðmundsdóttir, e-mail: elisabeg@landspitali.is Editor in Chief: Helga H. Bjarnadóttir, e-mail: helgab@landspitali.is

Table of contents

A typical day at Landspítali.....	3
Key statistics for Landspítali	4
Key figures, clinical divisions.....	6
Clinical services.....	8
Quality indicators	14
Academic research.....	15
Human resources	16
Financial accounts	17
Five year statistical overview.....	19



A typical day at Landspítali (2014)

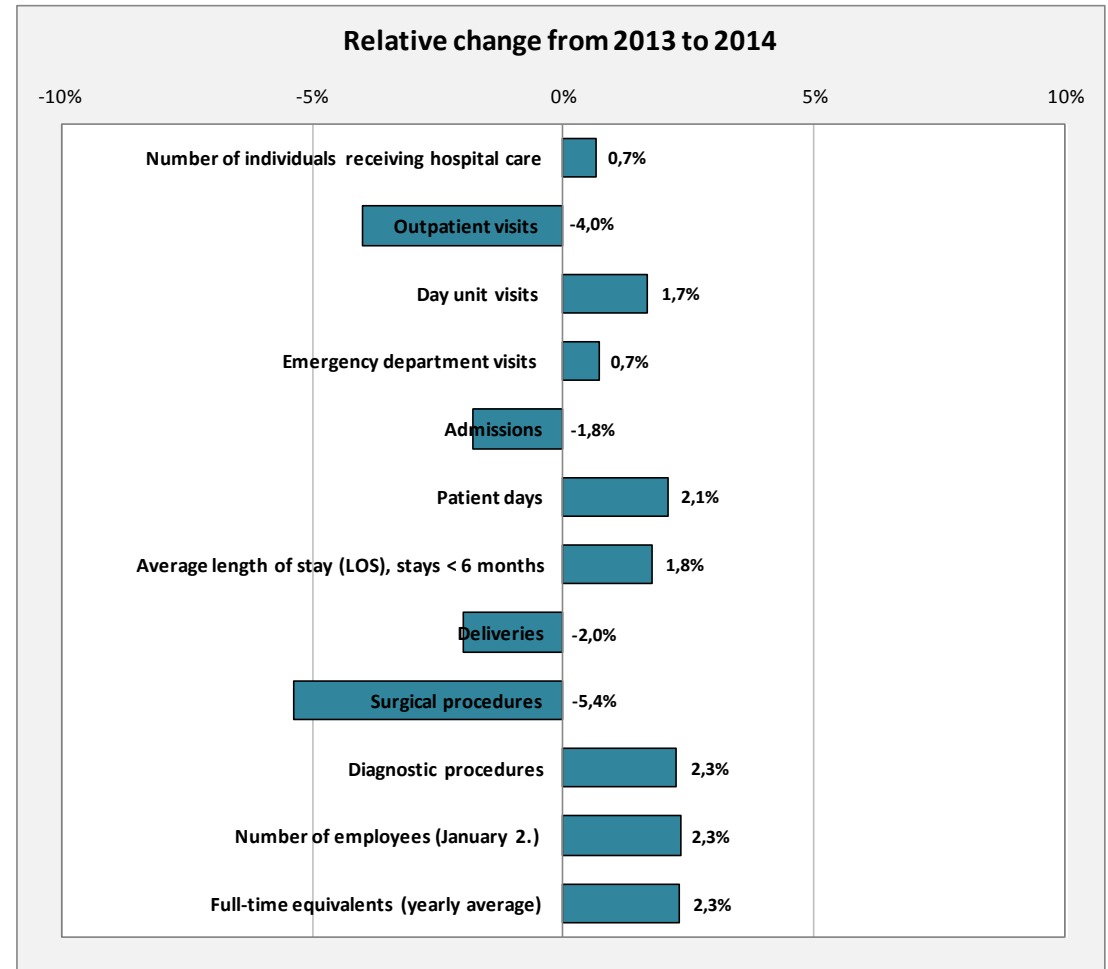
- **660** inpatients
- **1.300** day- and outpatient visits
- **80** new admissions
- **5.400** laboratory tests
- **540** visits to physio- and occupational therapists
- **300** emergency unit visits
- **55** surgical procedures
- **9** babies born
- **150** outpatient mental health visits
- **40** visits at pediatric emergency unit
- **7** cardiac catheterizations
- **30** patients in hemodialysis
- **12** patients in intensive-care units
- **3.700** employees at work
- **3,4** tons of waste
- Electricity usage equals use in **4.000** homes

Key statistics for Landspítali

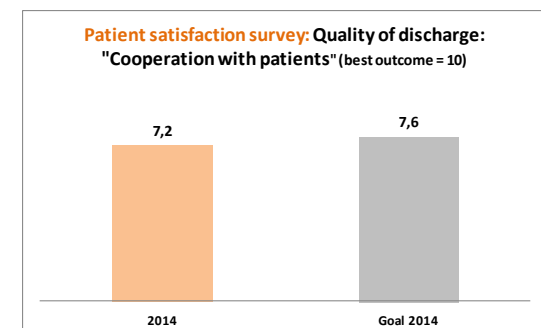
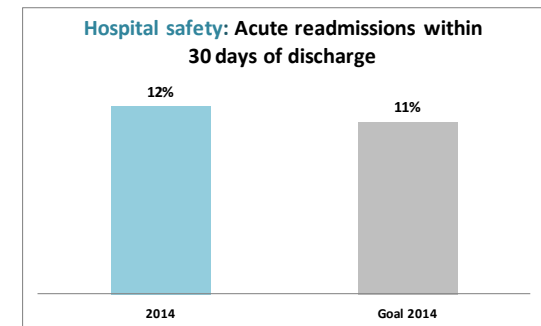
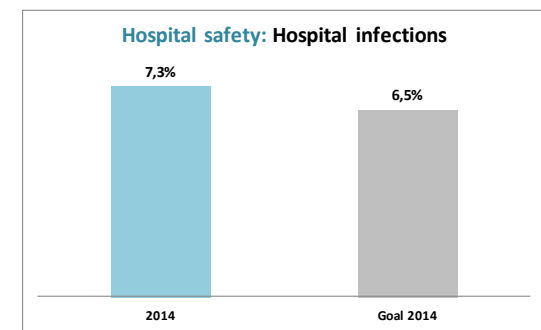
Key statistics for Landspítali

	2014	2013	2014-2013	Increase/ decrease
Number of individuals receiving hospital care ¹⁾	107.766	107.056	710	0,7%
Outpatient visits	227.333	236.833	-9.500	-4,0%
Day unit visits	79.114	77.811	1.303	1,7%
Emergency department visits	98.344	97.633	711	0,7%
Admissions	26.270	26.753	-483	-1,8%
Patient days	219.821	215.357	4.464	2,1%
Average length of stay (LOS), stays < 6 months	7,5	7,3	0,1	1,8%
Deliveries	3.165	3.229	-64	-2,0%
Surgical procedures	12.954	13.688	-734	-5,4%
Diagnostic procedures	1.964.669	1.921.338	43.331	2,3%
Number of employees (January 2.)	4.875	4.764	111	2,3%
Full-time equivalents (yearly average)	3.752	3.667	85	2,3%

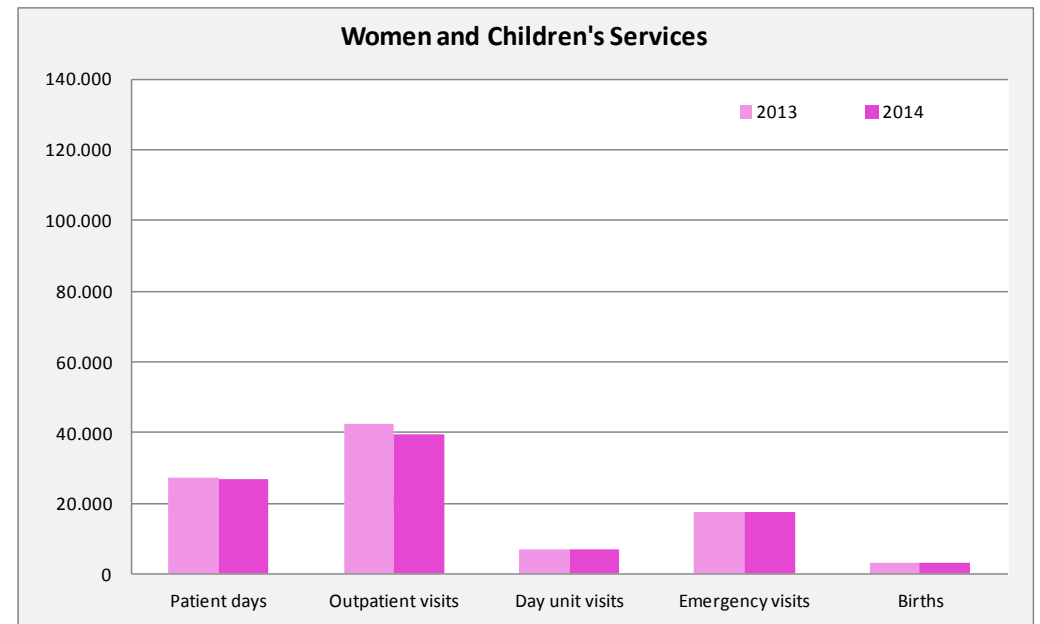
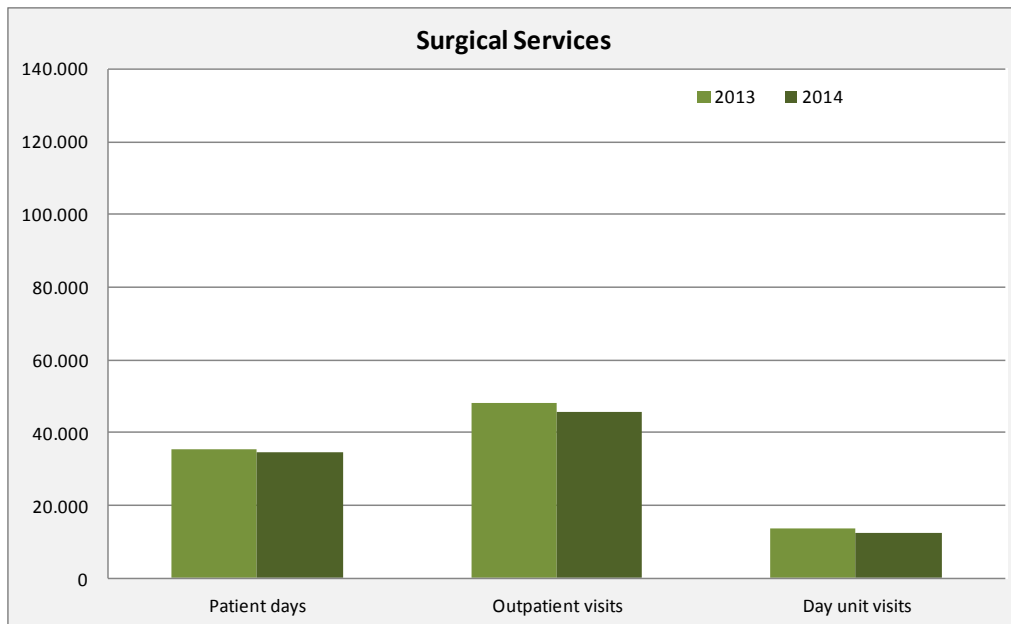
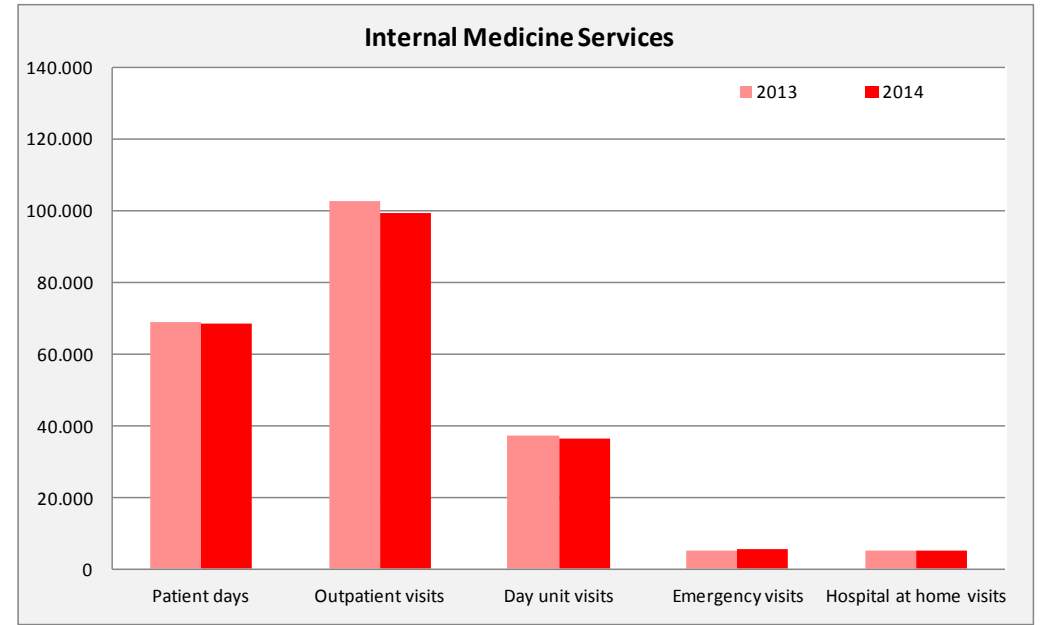
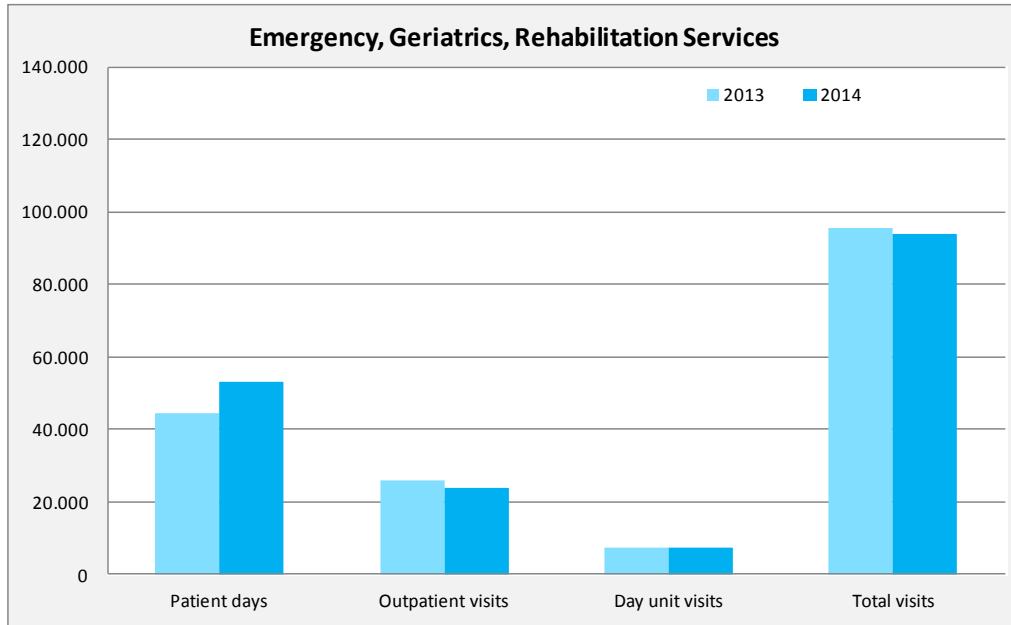
¹⁾ Each individual may have received care on more than one occasion, but is counted here only once.

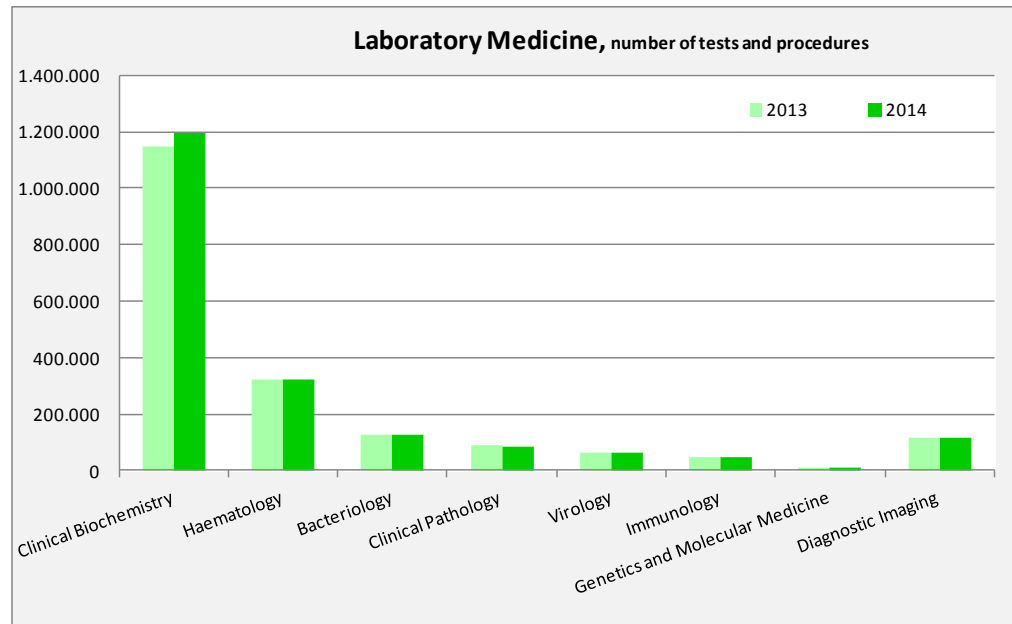
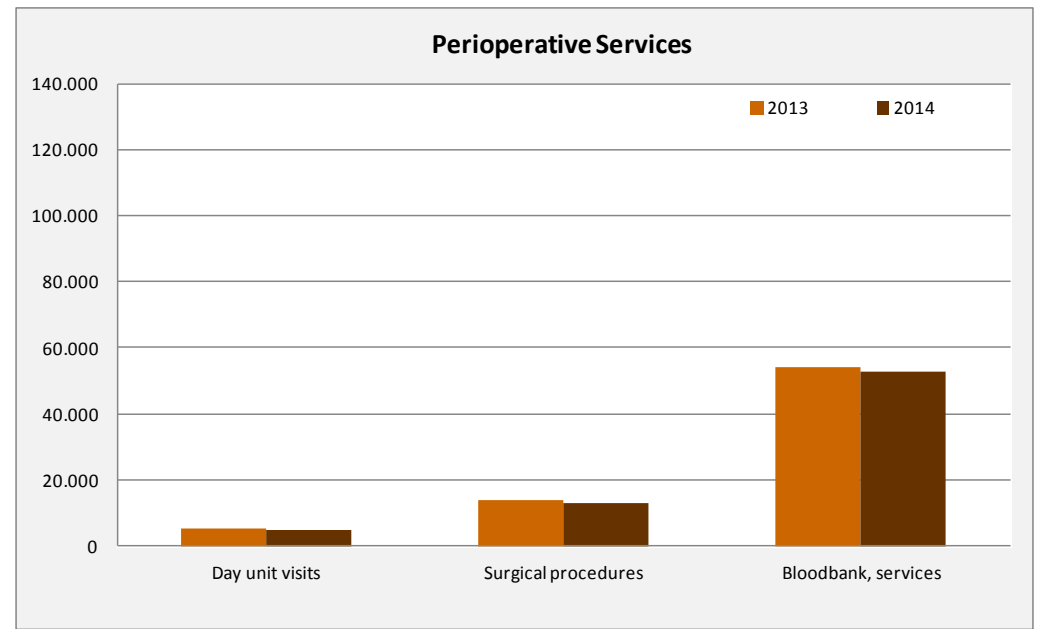
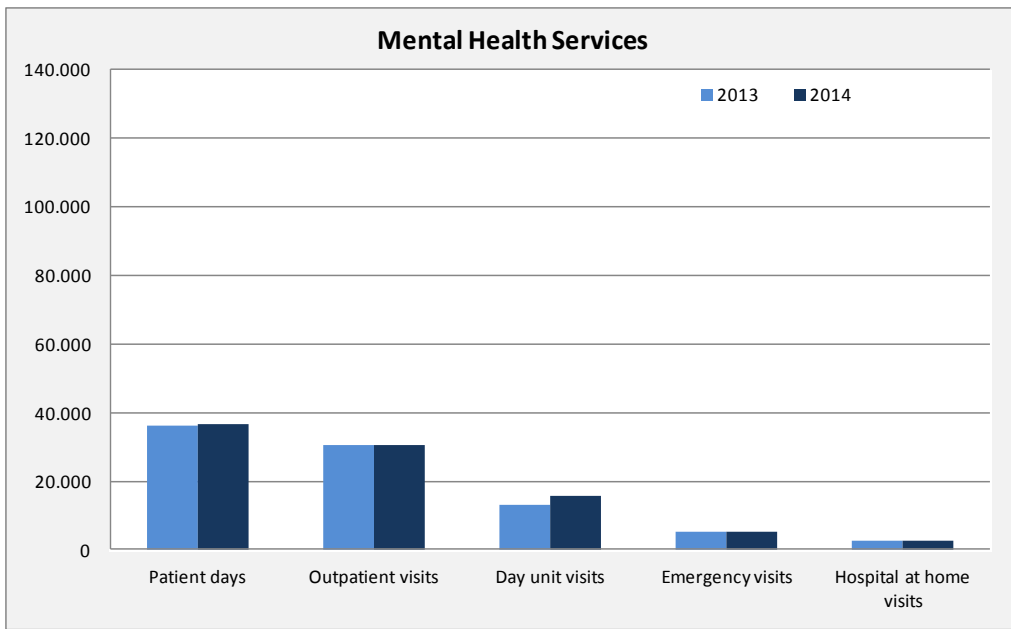


Hospital Scorecard 2014		
Hospital safety	2014	Goal 2014
Hospital infections	7,3%	6,5%
Number of medication incidents per 1.000 patient days	3	2
Percentage of patients, 70 years and older, with risk-assessment for pressure wounds < 24 hours from admission (Percentage is 22% without the time-limits)	6%	10%
Readmissions, acute readmissions within 30 days of discharge	12%	11%
Percentage of readmissions within 72 hours at Fossvogur ER	6%	5%
Good Working environment		
Employee satisfaction (best outcome =5)	3,9	4,2
Sickdays with and without pay	6,4%	<6,0%
Staff turnover	10%	10%
Percentage of employees receiving transport grants	24%	>30%
Number of publications (peer reviewed)	184	175
Efficient processes		
Average length of stay (stays longer than 6 months excluded)	7,5	<7,0
Percentage of ER patients admitted to inpatient units within 6 hours	49%	>60%
Percentage of inpatients discharged before 12:00 a.m.	25%	>33%
Patient satisfaction survey: Quality of discharge: "Cooperation with patients" (best outcome = 10)	7,2	7,6
Percentage of units that have developed min. 2 outcome indicators	45	>25
Operating costs within budget, amounts in millions ISK		
Net operating income	-749,3	0
Revenues from services sold, net	325,7	0
Research grants in millions ISK	241,1	190
Percentage of recycled waste	24%	30%



Key figures, clinical divisions





Clinical services

Inpatient Services

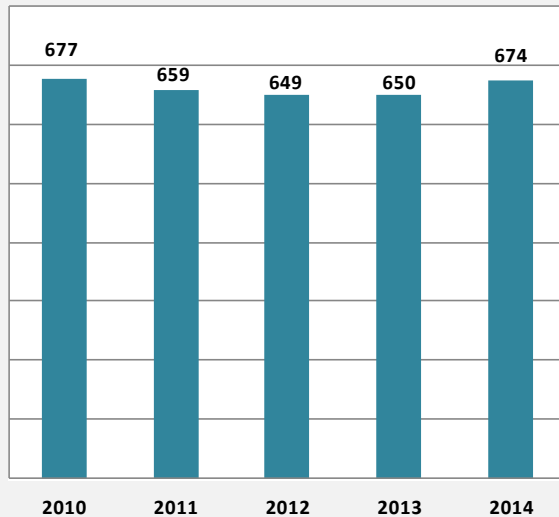
	Admissions		Increase/ decrease	Patient days		Increase/ decrease	Average length of stay		Increase/ decrease
	2014	2013		2014	2013		2014	2013	
Women and Children's Services	7.553	7.577	-0,3%	26.900	27.235	-1,2%	3,5	3,6	-0,8%
Mental Health Services	2.082	2.189	-4,9%	36.589	36.320	0,7%	13,2	16,7	-21,0%
Internal Medicine Services	8.574	8.760	-2,1%	68.428	68.816	-0,6%	8,1	7,9	2,5%
Surgical Services	6.486	6.915	-6,2%	34.722	35.491	-2,2%	5,3	5,0	5,8%
Emergency, geriatrics, rehabilitation services	1.575	1.301	21,1%	53.182	44.474	19,6%	30,1	32,4	-7,2%
Other	0	11	-100,0%	0	3.021	-100,0%	-	-	-
Total	26.270	26.753	-1,8%	219.821	215.357	2,1%	7,5	7,3	1,8%

Outpatient Services

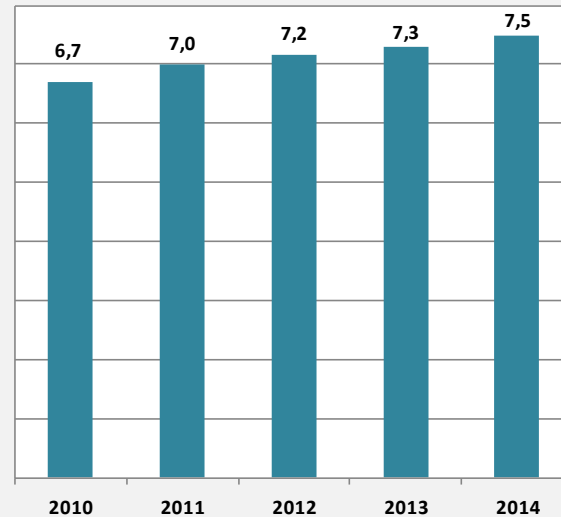
	Outpatient visits		Increase/ decrease	Day visits		Increase/ decrease
	2014	2013		2014	2013	
Women and Children's Services	39.579	42.512	-6,9%	7.076	7.113	-0,5%
Mental Health Services	30.431	30.454	-0,1%	15.737	13.107	20,1%
Internal Medicine Services ¹⁾	99.262	102.593	-3,2%	36.169	37.130	-2,6%
Surgical Services ¹⁾	45.855	48.363	-5,2%	12.586	13.493	-6,7%
Perioperative Services	-	-	-	4.943	5.220	-5,3%
Emergency, geriatrics, rehabilitation services	9.894	10.847	-8,8%	7.303	7.451	-2,0%
Laboratory Medicine Services (Genetics and Molecular Medicine)	655	780	-16,0%	0	0	-
Employee Health Care	1.657	1.284	29,0%	0	0	-
Total	227.333	236.833	-4,0%	79.114	77.811	1,7%

1) Gastroenterology belongs to Internal Medicine, however the gastroscopic day service belongs to Surgical Services. It is therefore counted in both, but only once in the total number.

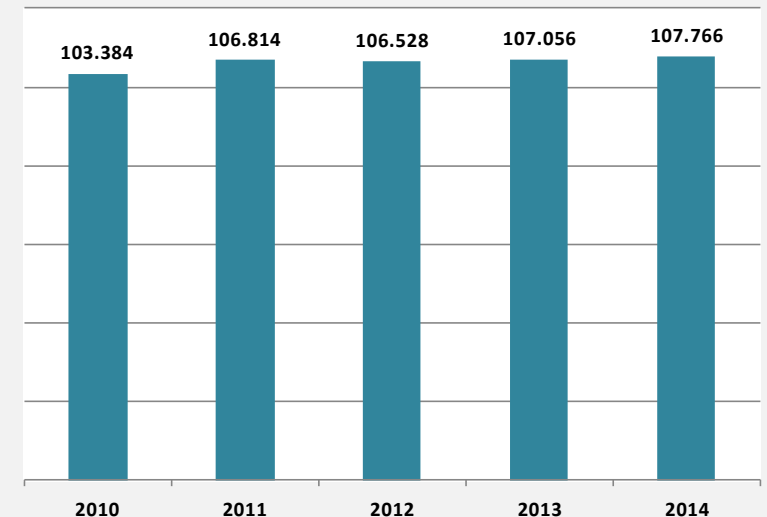
Number of hospital beds



Average length of stay (days)

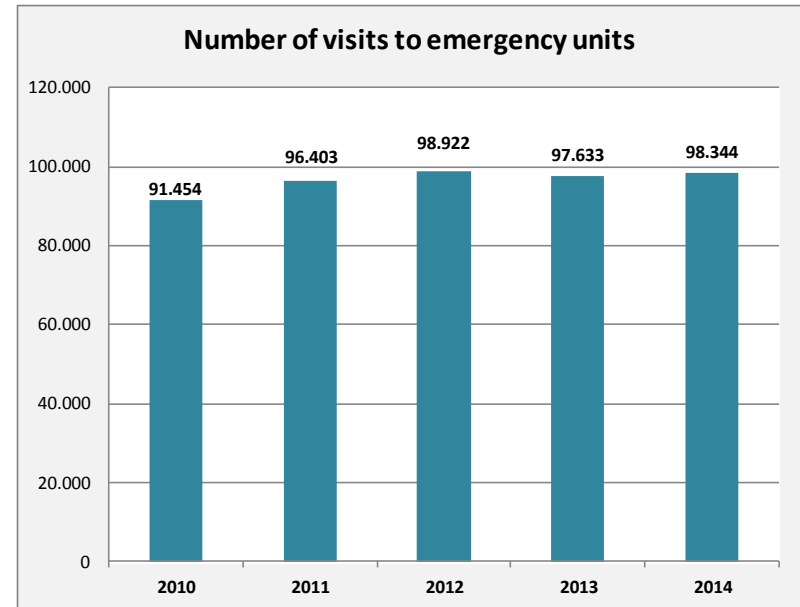
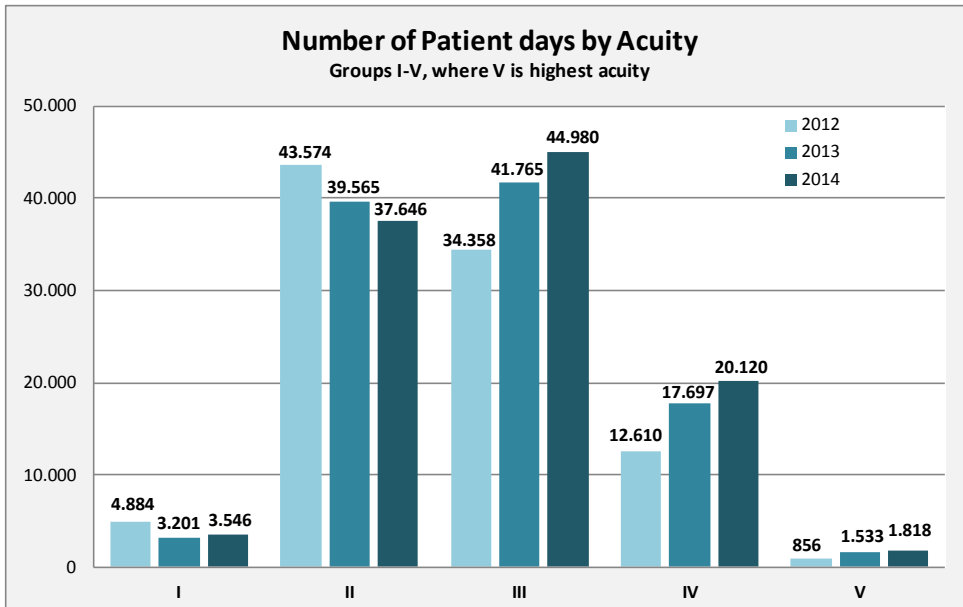


Number of individuals receiving hospital care



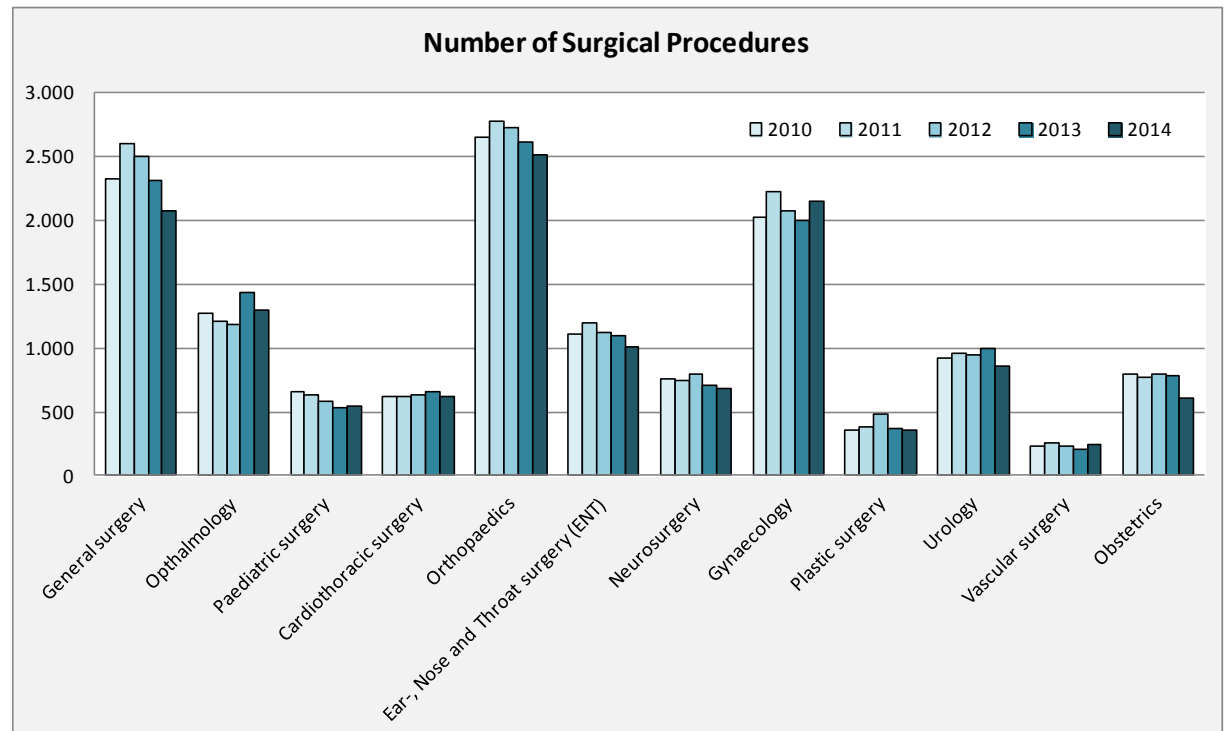
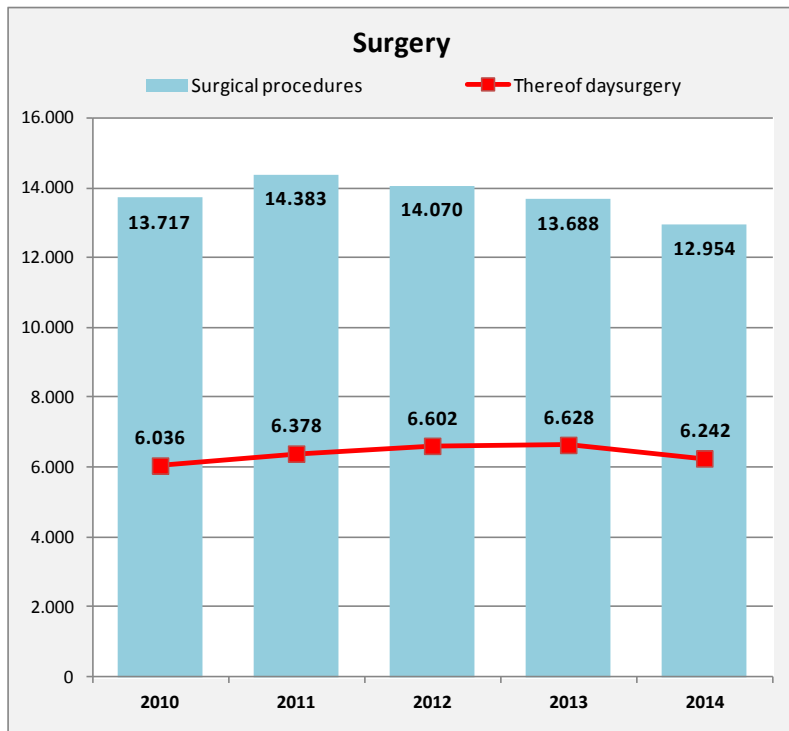
Emergency Visits

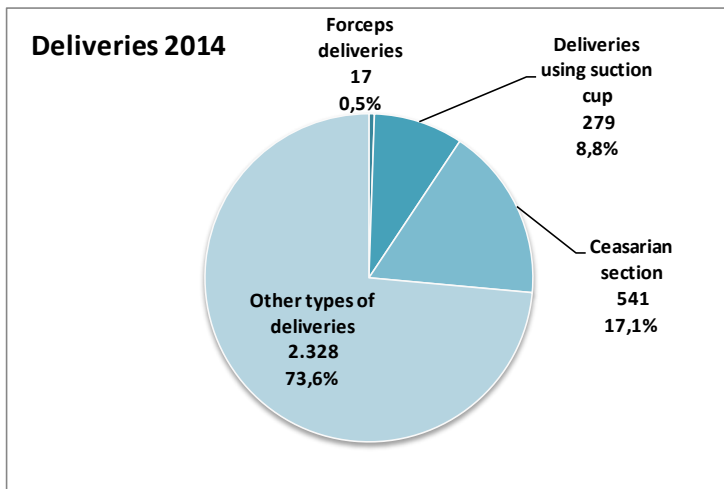
	Number of visits			Average number of visits per day		Admissions		Percentage admitted	
	2014	2013	Changes	2014	2013	2014	2013	2014	2013
	Women's Services	4.106	4.027	79	11	11	659	507	16,0%
Children's Services	13.260	13.520	-260	36	37	845	917	6,4%	6,8%
Mental Health Services	5.254	5.144	110	14	14	952	866	18,1%	16,8%
Cardiac Emergency Unit	5.494	5.130	364	25	23	1.260	1.246	22,9%	24,3%
Emergency Unit in Fossvogur, thereof;	70.230	69.812	418	192	191	8.441	8.144	12,0%	11,7%
<i>high priority (G2)</i>	29.209	30.458	-1.249	80	83	7.589	7.316	26,0%	24,0%
<i>low priority (G3)</i>	41.021	39.354	1.667	112	108	852	828	2,1%	2,1%
Total emergency visits	98.344	97.633	711	279	276	12.157	11.680	12,4%	12,0%



Surgical Procedures

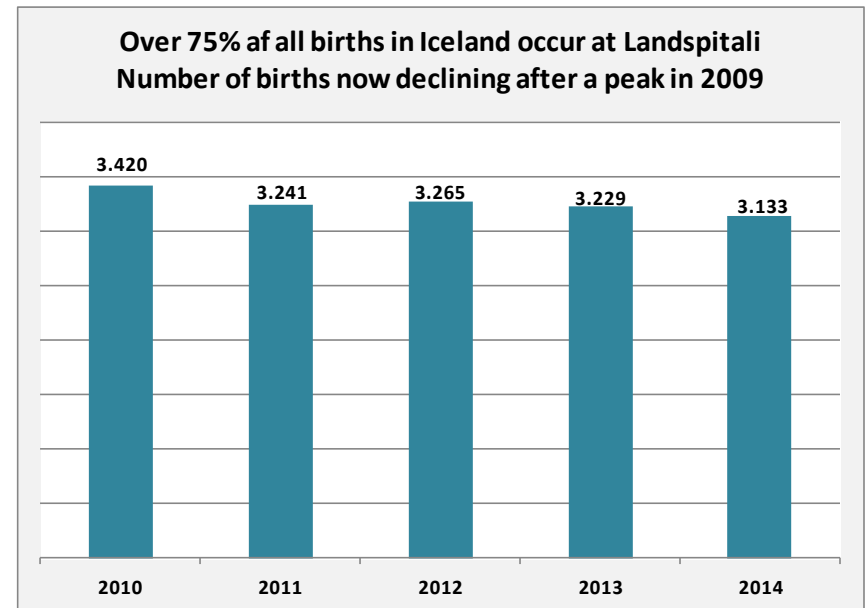
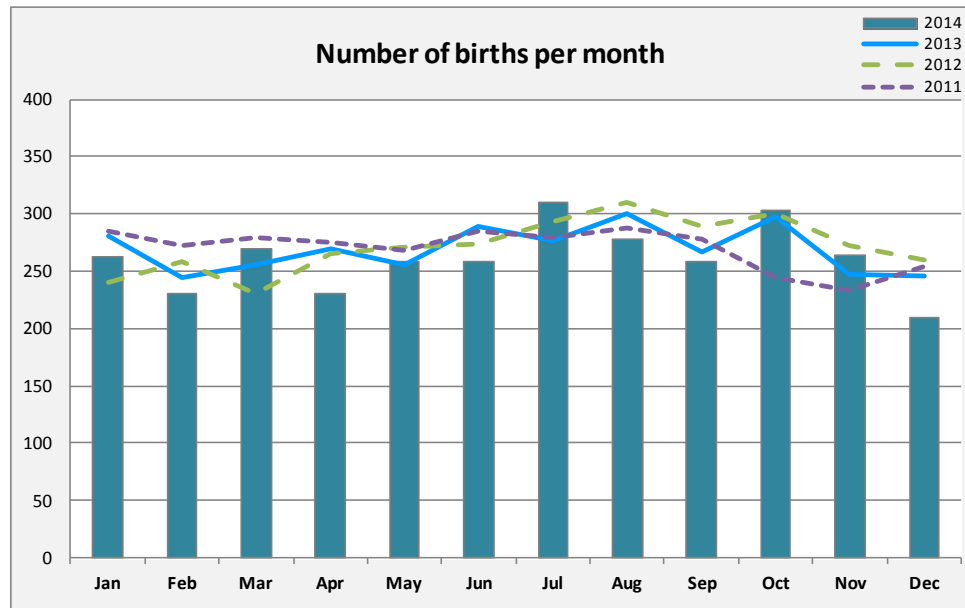
	Total		Increase/ decrease	Acute procedures		Day surgery	
	2014	2013		2014	Proportion	2014	Proportion
General surgery	2.078	2.498	-16,8%	678	32,6%	648	31,2%
Ophthalmology	1.300	1.187	9,5%	105	8,1%	1.176	90,5%
Paediatric surgery	548	583	-6,0%	236	43,1%	281	51,3%
Cardiothoracic surgery	619	638	-3,0%	275	44,4%	44	7,1%
Orthopaedics	2.507	2.721	-7,9%	1.185	47,3%	984	39,3%
Ear-, Nose and Throat surgery (ENT)	1.003	1.116	-10,1%	183	18,2%	691	68,9%
Neurosurgery	685	797	-14,1%	186	27,2%	294	42,9%
Gynaecology	2.152	2.067	4,1%	603	28,0%	1.435	66,7%
Plastic surgery	354	487	-27,3%	52	14,7%	132	37,3%
Urology	863	949	-9,1%	148	17,1%	488	56,5%
Vascular surgery	241	229	5,2%	85	35,3%	61	25,3%
Obstetrics	604	798	-24,3%	394	65,2%	8	1,3%
Total	12.954	14.070	-7,9%	4.130	31,9%	5.060	39,1%
Intraocular injections for treatment of age-related macular degeneration	3.874	3.511	10,3%	0	0,0%	3.874	100,0%





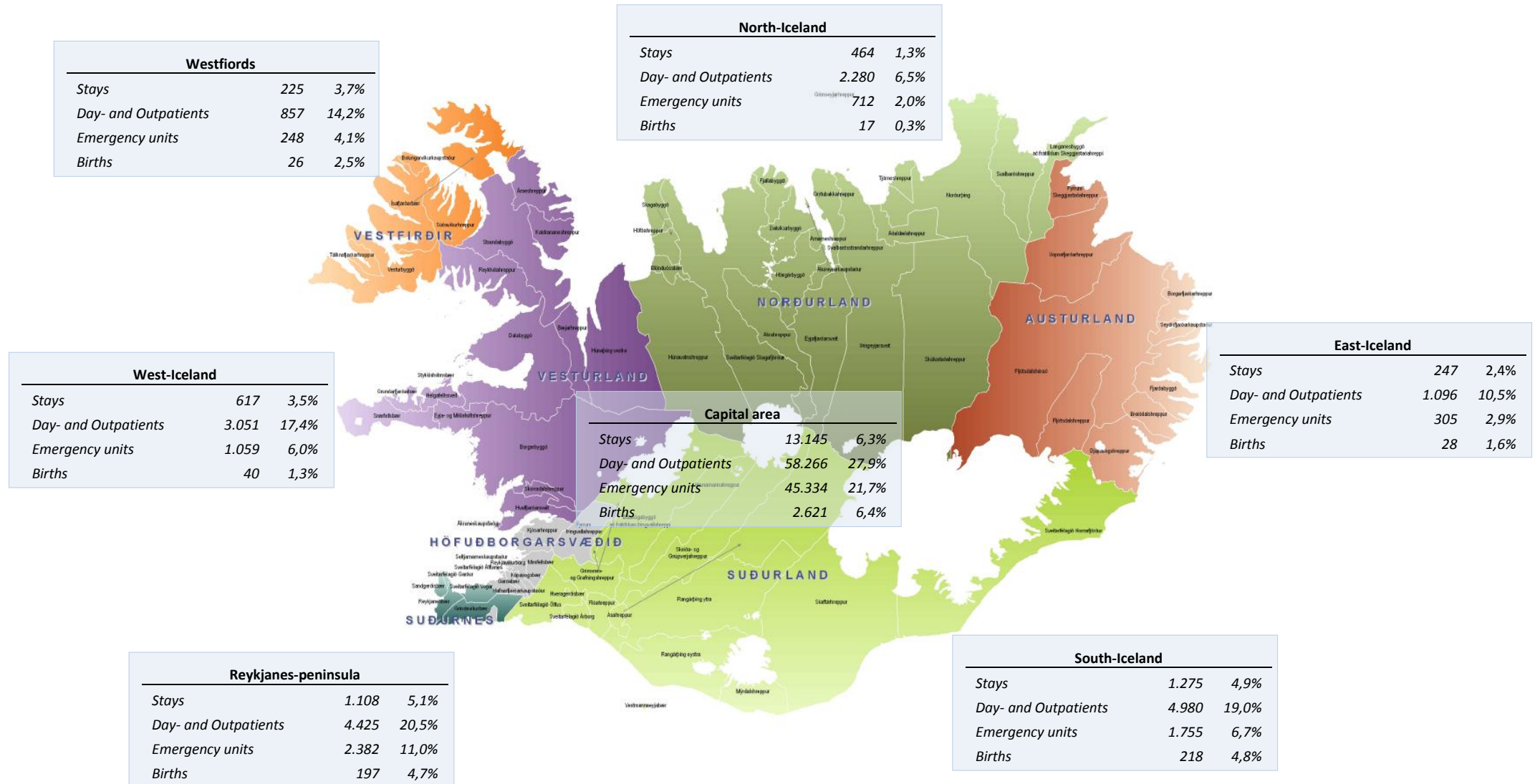
Deliveries

	2014	2013	Increase/ decrease
Number of births	3,165	3,229	-2,0%
proportion of all births in Iceland	73,8%	76,2%	-3,2%
Number of babies	3,231	3,295	-1,9%
Number of twins	66	60	10,0%
Number of triplets	0	3	-
Multiple births	2,1%	2,0%	-
Caesarean section rate	17,1%	17,5%	-



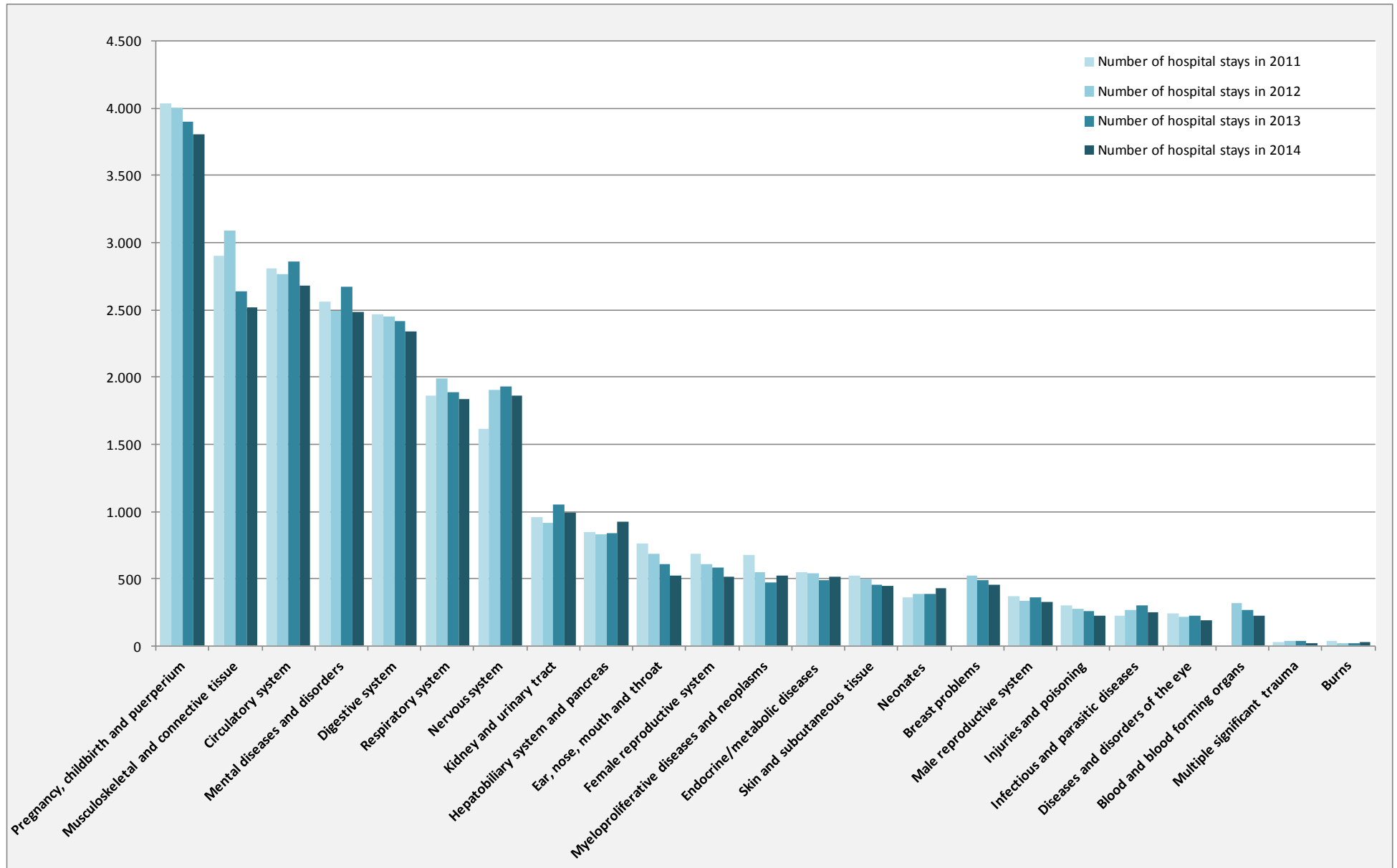
Our patients come from all parts of Iceland

Patients seeking health care services at Landspítali come from all health districts in the country. The first column shows the number of patients, the second column shows the percentage of inhabitants in each area that had at least one contact with Landspítali in 2014. Percentage of births is calculated from the number of women at the age 18 to 45 years living in the area.

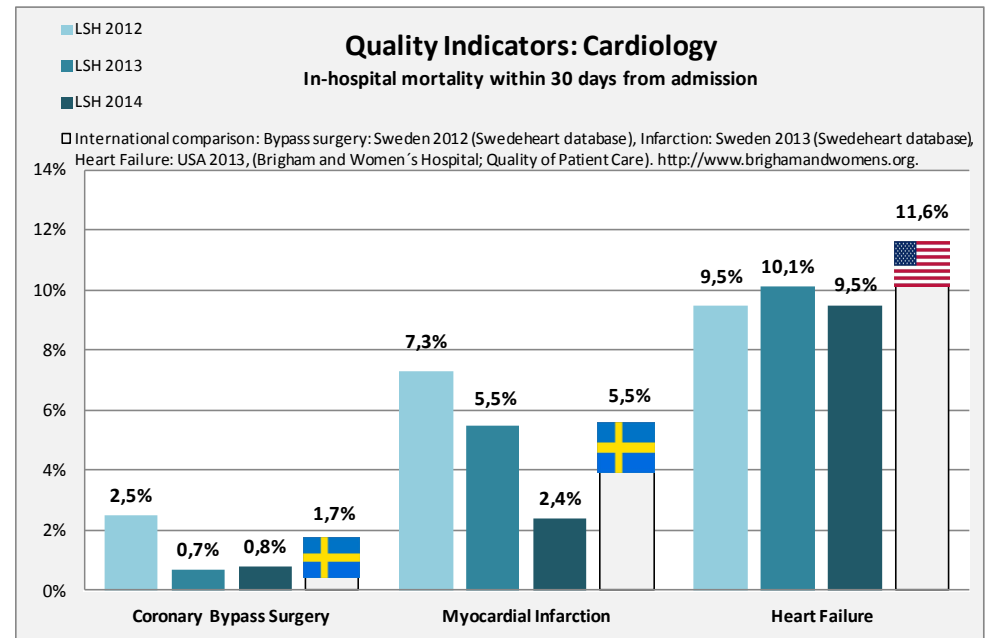
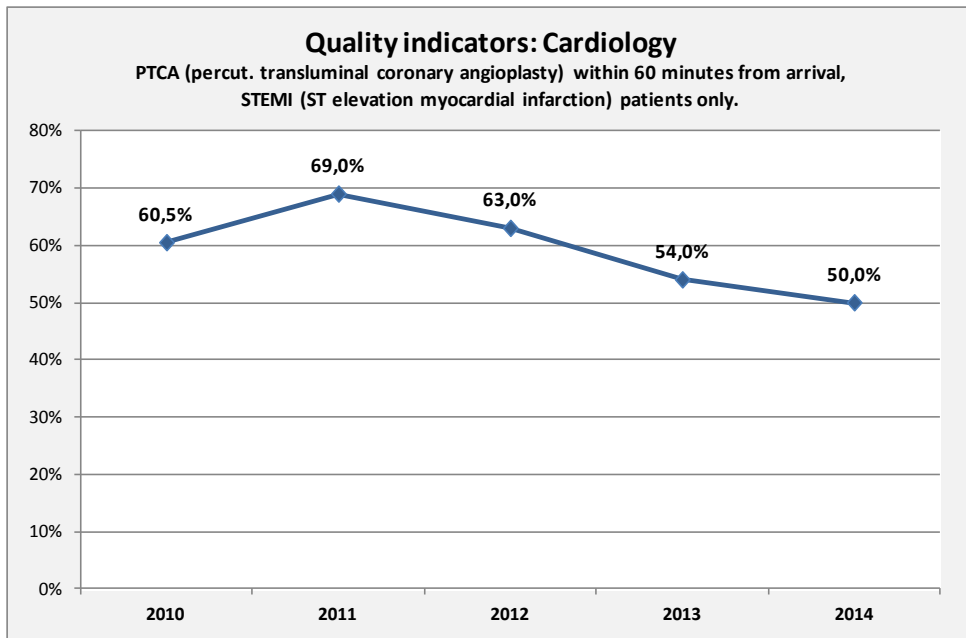
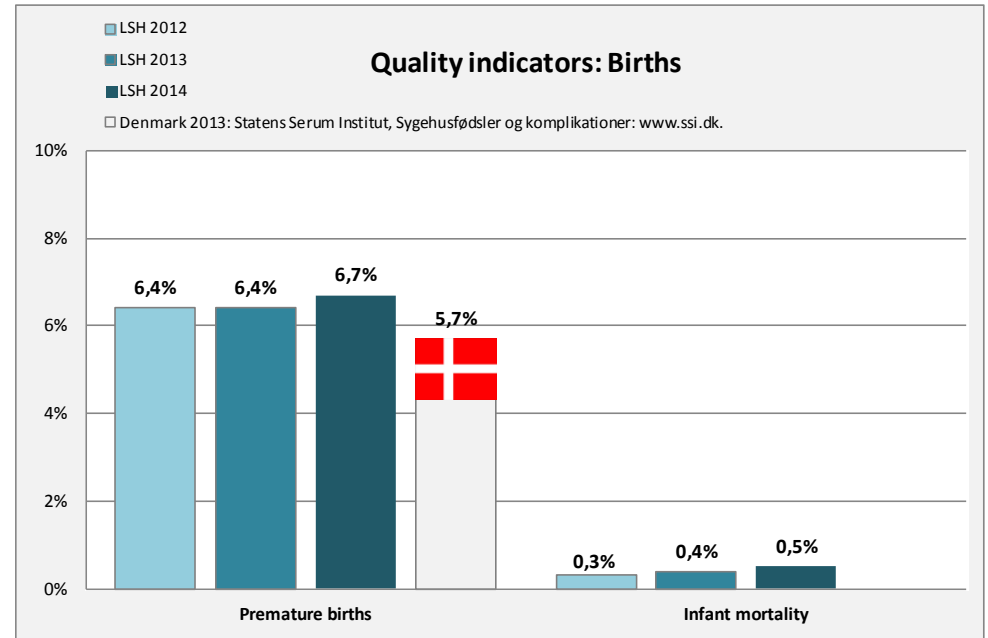
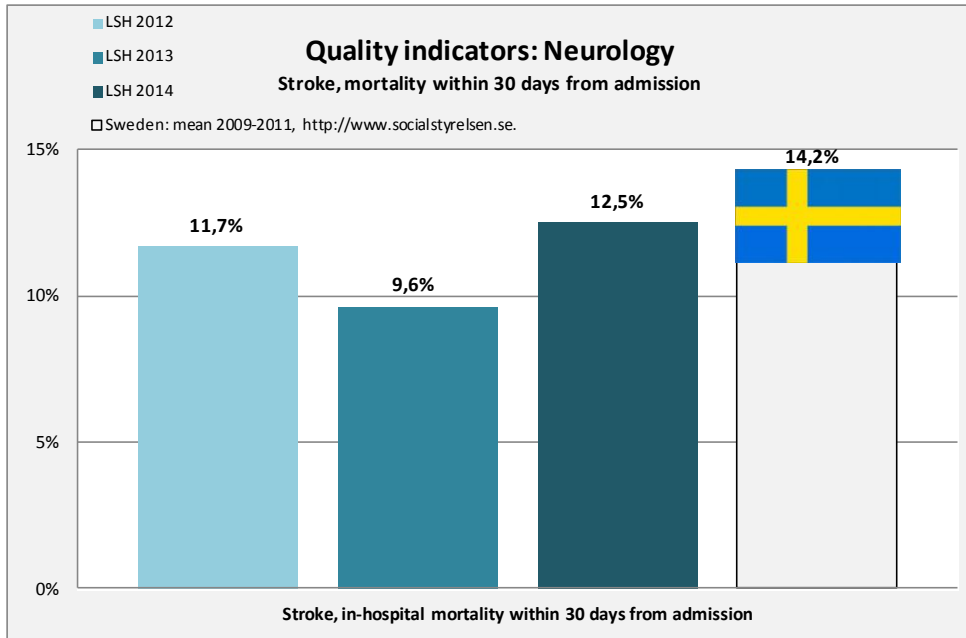


Inpatients; Main Diagnostic Categories (MDC) of the Diagnosis Related Groups (DRG) system

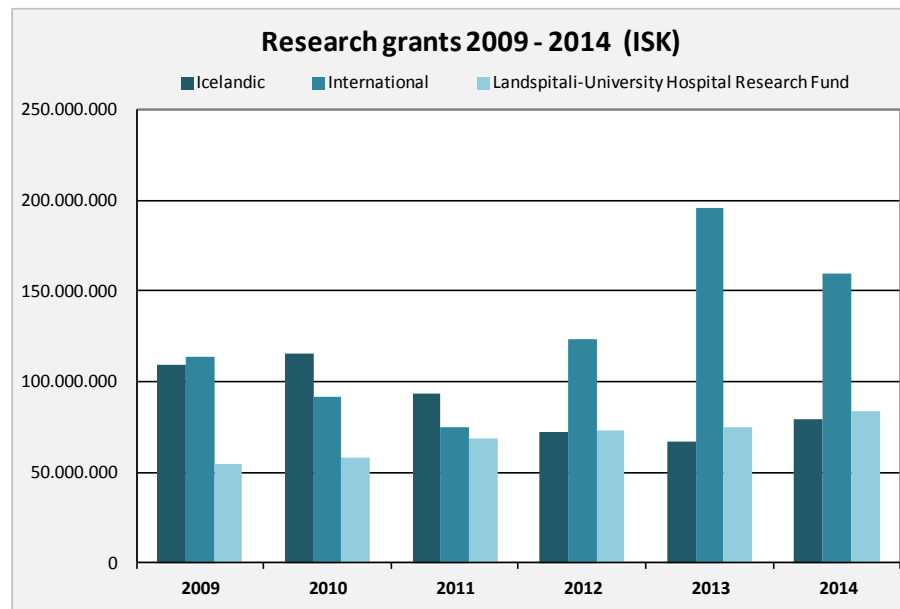
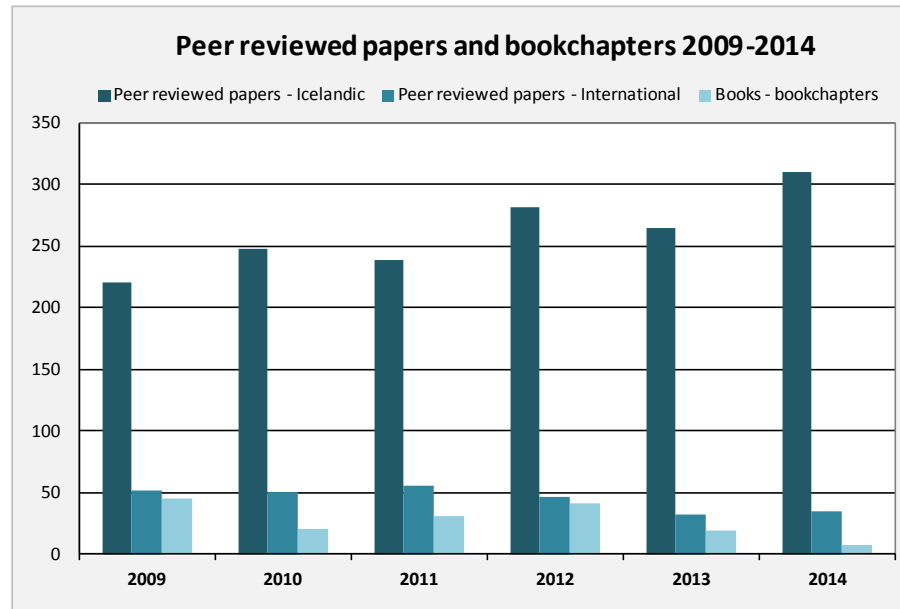
Number of inpatient stays 2011-2014



Quality indicators, examples



Academic research in university hospitals - foundation for quality care



Human resources

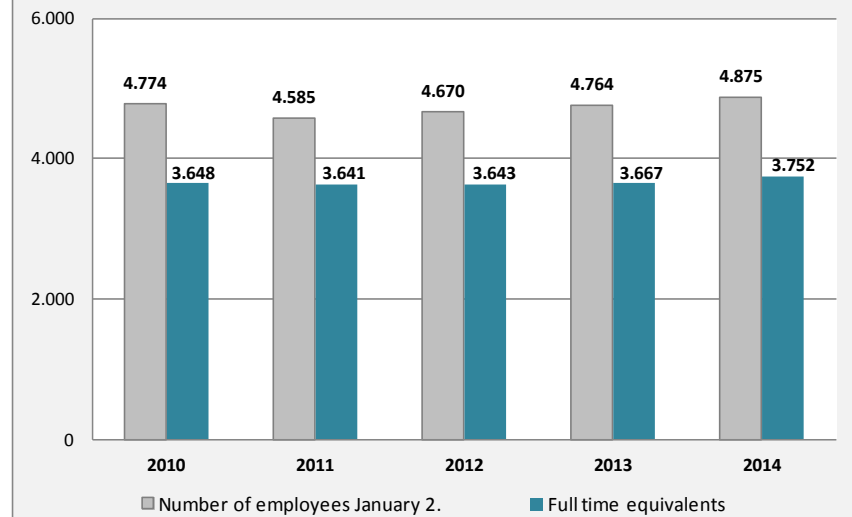
Full-time Equivalents (FTEs)

	Full-time equivalents (FTEs)	
	2014	2013
Internal Medicine Services,	667,9	622,0
Surgical Services	429,5	423,6
Perioperative Services	405,6	395,4
Women and Children's Services ¹⁾	438,8	436,3
Mental Health Services	436,7	436,2
Laboratory Medicine Services	342,9	346,6
Emergency, Geriatrics, Rehabilitation Services	589,2	546,1
Facilities and Operational Services	281,2	280,6
Finance and Information	89,6	89,9
Research and Development	43,0	44,9
Office of the Chief Executive ²⁾	27,1	25,4
Total	3.751,6	3.647,1

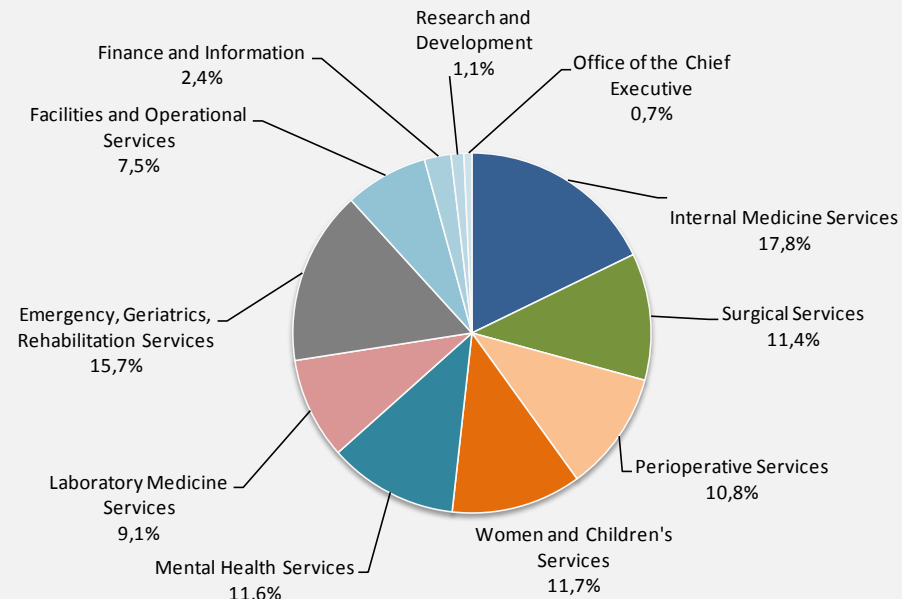
1) Includes IT department

2) Includes the Office of the Chief Medical Executive and the Office of the Chief Nursing Executive.

Number of FTEs and employees



Fulltime Equivalents (FTEs) Divisional Partition 2014



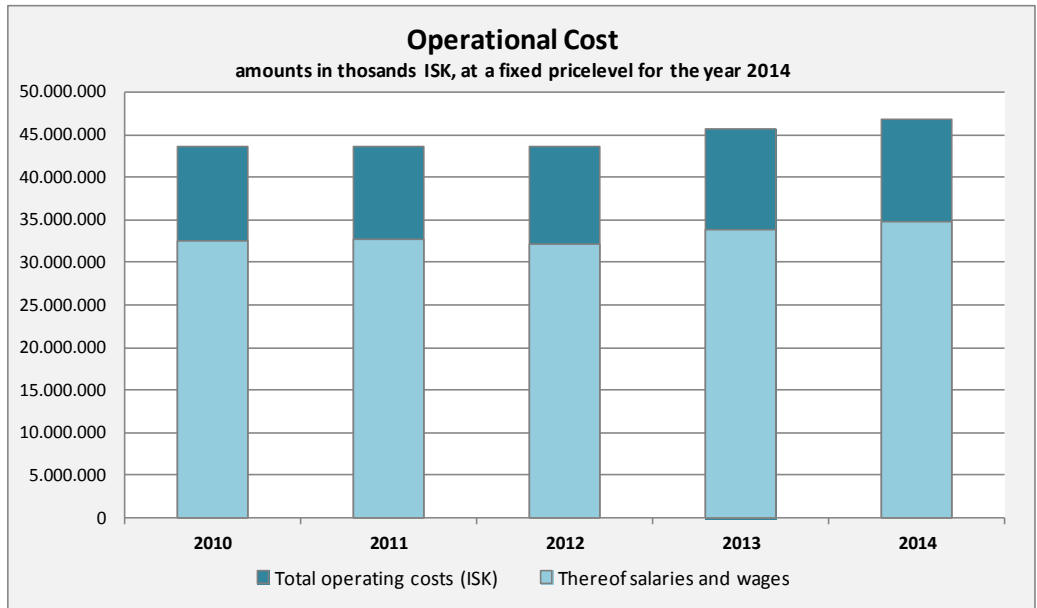
Financial accounts

Financial Accounts

	2014	2013	2012
Revenues			
Allotment in State Budget	43.553,9	39.193,9	36.478,2
Revenues from patient care and other operations	4.776,5	4.521,8	4.128,5
Income from Icelandic Health Insurance for S-labelled medications ¹⁾	4.857,4	4.840,2	4.446,5
Total Revenues	53.187,8	48.555,9	45.053,2
Expenses			
Wages and salaries	34.719,7	31.857,8	28.810,3
Other operating expenses	12.166,8	11.729,9	11.033,3
"S-labelled" medications ¹⁾	4.758,2	4.746,7	4.346,5
Capital investments, maintenance and equipment	2.317,8	1.736,6	874,9
Total Expenses	53.962,5	50.071,0	45.065,0
Revenues above Expenses			
Revenues above Expenses/(Expenses above Revenues)	(774,7)	(1.515,2)	(11,8)
Other Revenues			
Financial revenues and (expenses)	25,3	31,1	28,2
Total Revenues above Expenses/(Expenses above Revenues)	(749,4)	(1.484,0)	16,4

Amounts in ISK millions

¹⁾ "S-labelled" medications are those intended only for hospital use and are specially provided for in the State Budget.



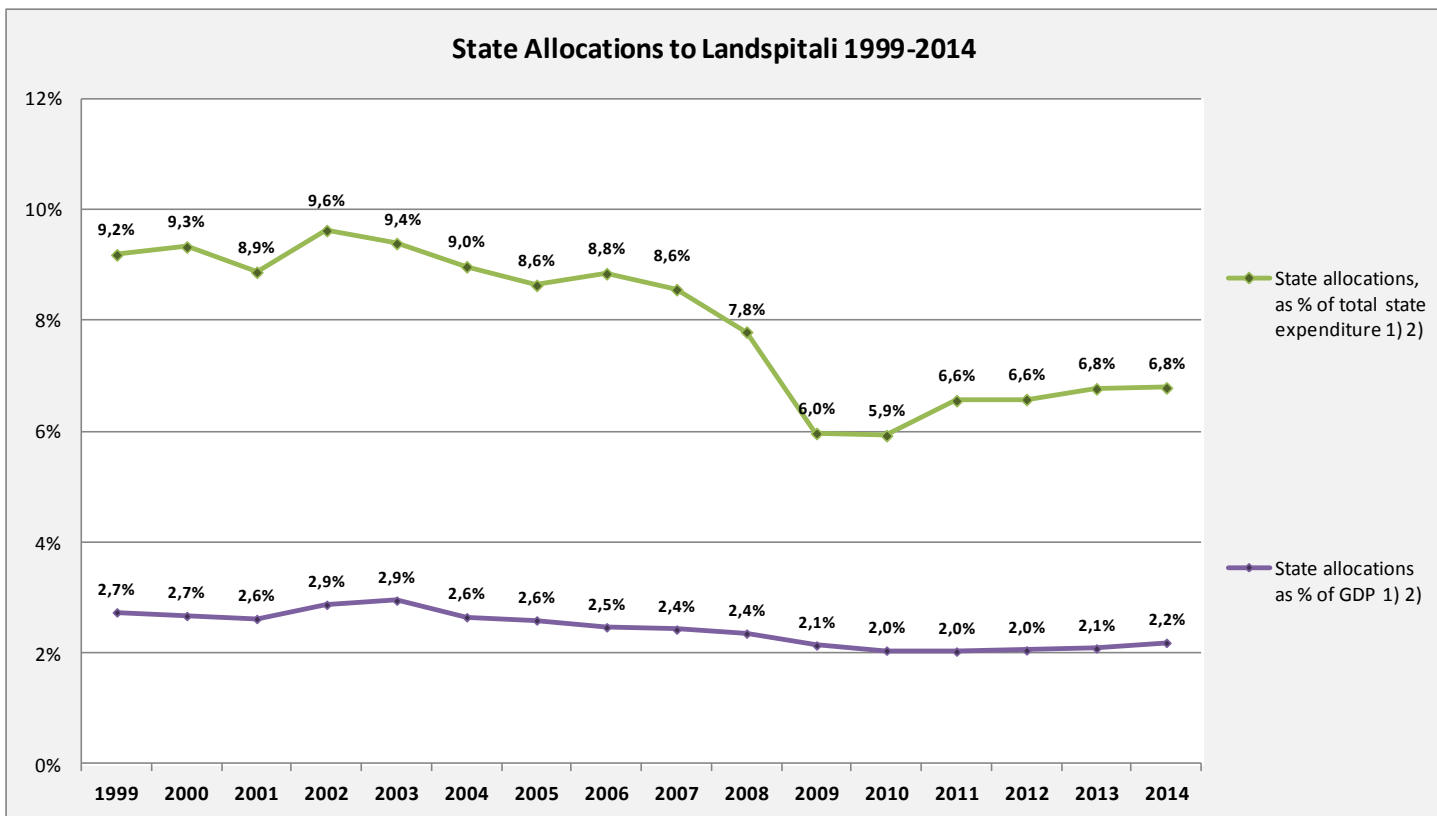
Accounts; Divisonal Partition

	Total Revenues and Expenses				Revenues from patient services and other operations		Wages & Salaries		Other Operating Expenses	
	2014	Budget	Absolute Difference	Relative Difference	2014	Budget	2014	Budget	2014	Budget
	Office of the Chief Executive	465,2	472,1	6,9	1,5%	4,9	4,0	343,4	350,6	126,6
Finance and Information	854,8	864,0	9,2	1,1%	14,3	3,2	723,9	733,9	145,2	133,3
Facilities and Operational Services	4.199,9	4.198,6	(1,3)	0,0%	699,8	625,1	1.824,4	1.774,1	3.075,3	3.049,5
Research and Development	535,4	555,2	19,8	3,6%	63,9	64,1	462,6	470,3	136,7	149,0
Emergency, Geriatrics, Rehabilitation	5.357,6	5.029,7	(327,9)	-6,5%	2.414,4	2.409,8	5.222,5	5.173,5	2.549,5	2.266,1
Internal Medicine Services	7.931,7	7.602,9	(328,8)	-4,3%	688,0	616,8	6.484,3	6.188,6	2.135,4	2.031,1
Surgical Services	4.445,8	4.423,0	(22,8)	-0,5%	246,9	230,4	4.102,5	4.110,1	590,2	543,4
Women and Children's Services	5.139,2	5.049,0	(90,1)	-1,8%	311,6	263,5	4.380,0	4.342,9	1.070,8	969,6
Mental Health Services	3.751,1	3.736,4	(14,7)	-0,4%	97,2	87,9	3.605,6	3.601,1	242,7	223,2
Perioperative Services	6.091,4	6.000,4	(91,0)	-1,5%	355,2	357,4	3.987,0	3.965,1	2.459,6	2.392,6
Laboratory Medicine Services	3.316,6	3.393,1	76,4	2,3%	1.350,2	1.295,4	3.278,2	3.329,7	1.388,6	1.358,7
Other	21,2	-79,0	(100,2)	126,9%	759,7	722,6	305,2	104,9	475,7	538,7
Internal transactions	0,0	0,0	0,0	-	-2.229,5	-2.229,5	-	-	-2.229,5	-2.229,5
Total	42.110,0	41.245,5	-864,5	-2,1%	4.776,5	4.450,8	34.719,7	34.145,1	12.166,8	11.551,2

Amounts in ISK millions

State allocations to Landspítali as a percentage of total health care expenditure have decreased since 1999

Same goes for state allocations as a percentage of total state expenditure and percentage of GDP (Gross Domestic Product)



1) According to State Budget

2) In the State Budget 2009 allocations for S-labelled medications were transferred from Landspítali to the Icelandic Health Insurance Agency. (S-labelled medications are those intended solely for use in hospitals.)

Five year statistical overview

Fem års statistisk oversigt

	2014	2013	2012	2011	2010	
Population development in the capital area ¹⁾						Udvikling af befolkningen i hovedstadsområdet ¹⁾
Number of inhabitants	208.752	205.675	203.594	202.341	200.907	Befolkning
Annual increase	1,50%	1,02%	0,62%	0,71%	-0,17%	Årlig vækst
Number of inhabitants age 70 years and older	18.021	17.556	17.082	16.770	16.638	Antal beboere 70 år og ældre
Proportion of inhabitants age 70 years and older	8,63%	8,54%	8,39%	8,29%	8,28%	Procent beboere 70 år og ældre
Number of inhabitants age 80 years and older	7.425	7.320	7.148	6.936	6.730	Antal beboere 80 år og ældre
Proportion of inhabitants age 80 years and older	3,56%	3,56%	3,51%	3,43%	3,35%	Procent beboere 80 år og ældre
Key operational statistics ²⁾						Nøgletal for hospitalet ²⁾
Total operational costs (ISK) ³⁾	46.886.493	45.642.952	43.689.536	43.602.789	43.659.441	Samlede udgifter ³⁾
Salaries	74%	74%	74%	75%	74%	Udgifter til personale
Medication costs ³⁾	1.671.833	1.600.702	1.470.062	1.467.377	1.545.346	Udgifter til medicin ³⁾
Number of individuals receiving hospital care	107.766	107.056	106.528	106.814	103.384	Antal personer som fik tjeneste fra hospitalet
Emergency units, visits	98.344	97.633	98.922	96.403	91.454	Skadestue, antal besøg
Outpatient units visits, thereof	227.333	236.833	235.403	238.203	236.339	Ambulante besøg, deraf
<i>dayward units, visits ⁴⁾</i>	79.114	77.811	77.922	79.505	81.205	<i>dagpatienter, antal besøg ⁴⁾</i>
Patient days ⁴⁾	219.821	215.357	213.515	208.563	204.110	Antal sengedage ⁴⁾
Admissions ⁴⁾	26.270	26.753	27.317	27.534	27.728	Antal indlæggelser ⁴⁾
Average length of stay, thereof	8,2	8,6	7,8	7,6	7,4	Gennemsnitlig liggetid, deraf
<i>stays < 6 months</i>	7,5	7,3	7,2	7,0	6,7	<i>liggetid < 6 måneder</i>
DRG casemix index, inpatients ⁵⁾	1,12	1,14	1,12	1,13	1,24	Gennemsnitlig DRG-vægt af indlagte patienter ⁵⁾
Total DRG units ⁵⁾	45.152	46.199	46.045	46.473	49.238	Samlede DRG enheder ⁵⁾
Hospital beds	674	650	649	659	677	Antal senge
Surgical procedures, thereof	12.954	13.688	14.070	14.383	13.717	Kirurgiske behandlinger, deraf
<i>same day surgery</i>	6.242	6.628	6.602	6.378	6.036	<i>dagskirurgi</i>
Number of births	3.165	3.229	3.265	3.241	3.420	Antal fødsler
Diagnostic services, thereof	1.964.669	1.921.338	1.832.182	1.822.438	1.737.843	Diagnostiske undersøgelser, deraf
<i>Diagnostic imaging</i>	116.099	116.600	123.901	124.140	119.126	<i>antal radiologiske undersøgelser</i>
Staffing, full time equivalents	3.752	3.667	3.643	3.641	3.648	Antal ansatte/årsværk
Number of employees ⁶⁾	4.875	4.764	4.670	4.585	4.774	Antal ansatte personer ⁶⁾
Staff turnover	10,4%	11,1%	11,1%	10,8%	11,3%	Personale omsætning

1) Data from Statistics Iceland. Data fra Islands Statistik.

2) Data from hospital annual reports. Data fra hospitalets årsberetning.

3) Numbers in thousands (ISK), at fixed price level for the year 2014. Tal i tusind (ISK), ved fast pris for året 2014.

4) Figures may be affected by considerable operational changes in the period. I nogle tilfælde kan tallene ikke sammenlignes pga. ændringer af hospitalets bedrift i perioden.

5) Total DRG units based on each years DRG weights. Samlede DRG enheder baseres på årlige DRG vægte.

6) The number for 2013 has been corrected from the number published in 2014. Tallet for 2013 er korrigeret fra tal udgivet i 2014

	2014	2013	2012	2011	2010	
Average exchange rate USD to ISK	116,75	122,23	125,05	116,07	122,04	Gennemsnitlig valutakurs USD til ISK
Average exchange rate EUR to ISK	154,86	162,38	160,73	161,42	161,89	Gennemsnitlig valutakurs EUR til ISK

Updated/Opdateret May / maj 2015