



HOSPITAL STATISTICS
AND ACCOUNTS
LANDSPÍTALI 2017

Compassion – Professionalism – Safety – Progress

Landspítali is the university hospital and main hospital of Iceland and a referral hospital for the whole country.

Landspítali is organized as divisions that offer diverse clinical services in outpatient clinics, day patient units, inpatient wards, clinical laboratories and other departments. The hospital's support divisions provide a range of services related to teaching and training of clinical staff, human resources, finance and economics, information technology and operations.

Executive Committee

Páll Matthíasson Chief Executive Officer

Alma Möller Chief Executive of Perioperative Services

Ásta Bjarnadóttir Chief Executive of Human Resources

Benedikt Olgeirsson Chief Executive of Development

Guðlaug Raket Guðjónsdóttir Chief Executive of Emergency, Geriatrics, Rehabilitation Services

Hlíf Steingrimsdóttir Chief Executive of Internal Medicine

Ingólfur Þórisson Chief Executive of Facilities and Operational Services

Jón Hilmar Friðriksson Chief Executive of Diagnostic Medicine Services

Lilja Stefánsdóttir Chief Executive of Surgical Services

Linda Kristmundsdóttir Chief Executive of Women and Children's Services

María Einisdóttir Chief Executive of Mental Health Services

María Heimisdóttir Chief Executive of Finance and Information

Ólafur Baldursson Chief Medical Executive

Sigríður Gunnarsdóttir Chief Nursing Executive

Hospital Statistics and Financial Accounts

Landspítali, Division of Finance and Information

Eiríksgata 5, 101 Reykjavík, Iceland

Tel: +354 543 1000

www.landspitali.is

Table of Contents

A typical day at Landspítali	2
Key statistics for Landspítali	3
Key figures, clinical divisions	4
Clinical services.....	6
Quality indicators	12
Academic research.....	13
Human resources	14
Financial accounts	15
Five year statistical overview	17



A typical day at Landspítali (2017)

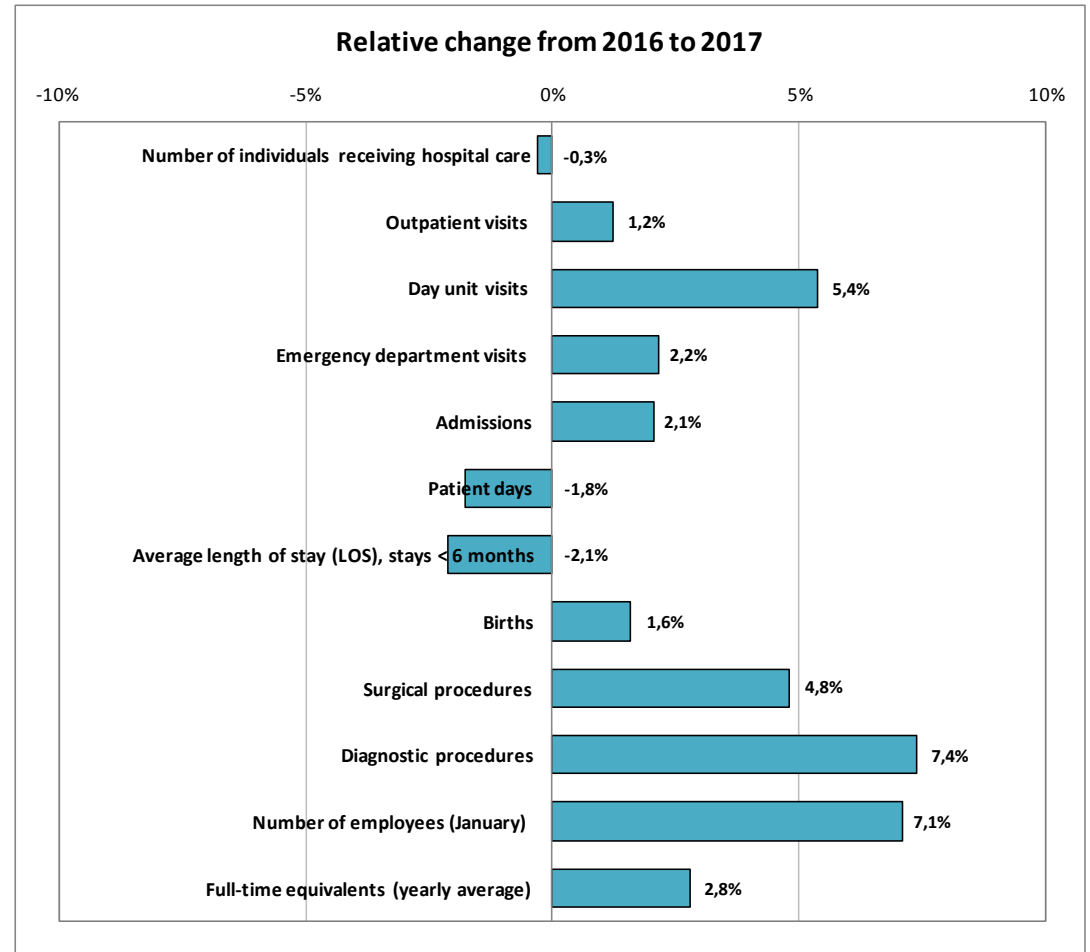
- **616** inpatients
- **1.330** day- and outpatient visits
- **73** new admissions
- **6.700** laboratory tests
- **590** visits to physio- and occupational therapists
- **290** emergency unit visits
- **66** surgical procedures
- **8** babies born
- **140** outpatient mental health visits
- **37** visits at pediatric emergency unit
- **8** cardiac catheterizations
- **25** patients in hemodialysis
- **12** patients in intensive-care units
- **3.700** employees at work
- **3,5** tons of waste, **32%** recycled
- Electricity usage equals use in **4.250** homes

Key statistics for Landspítali

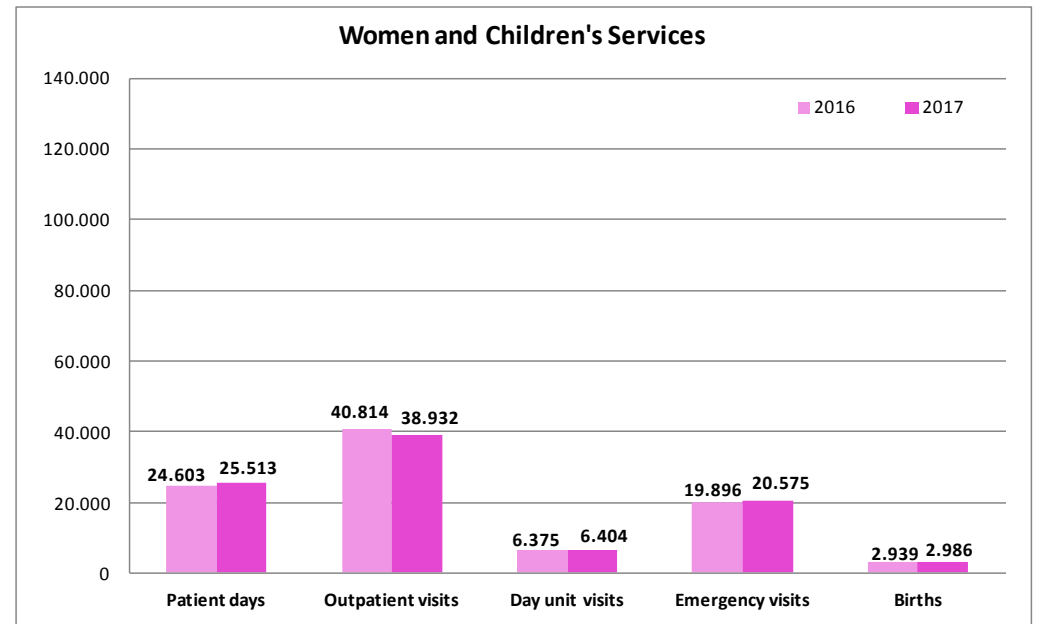
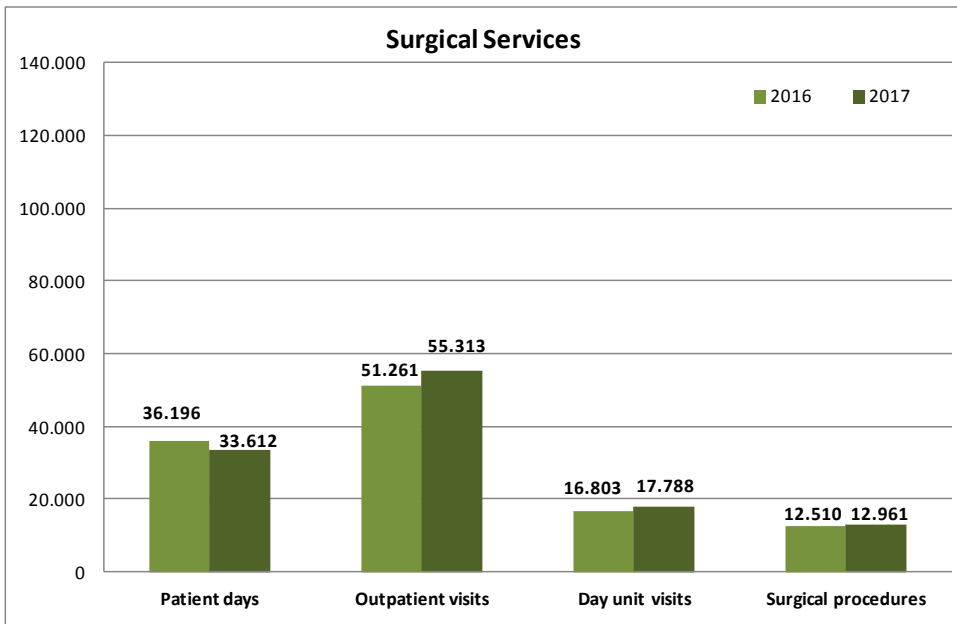
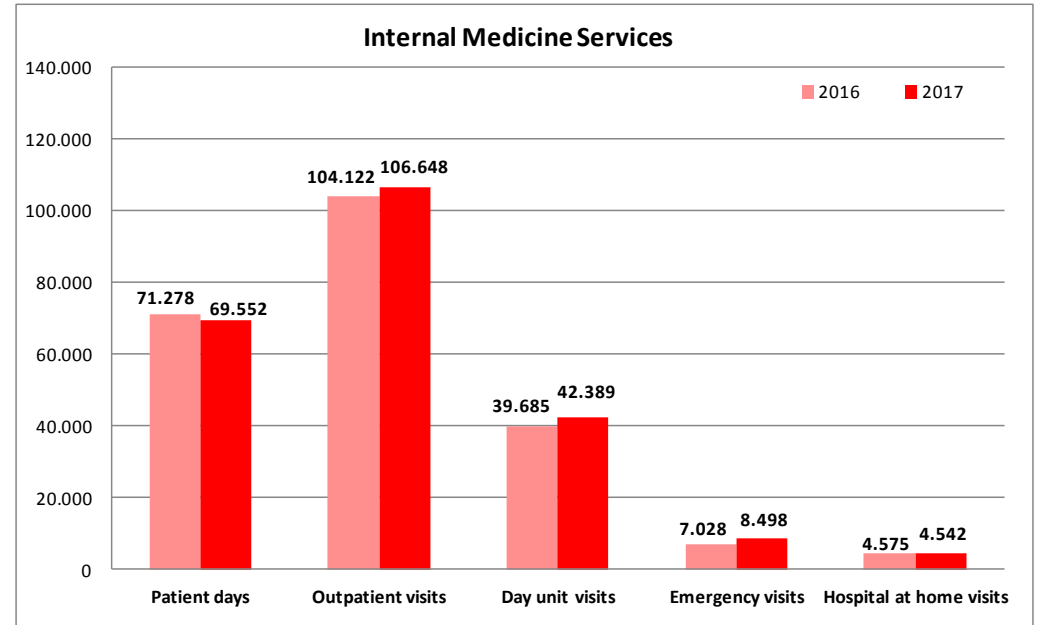
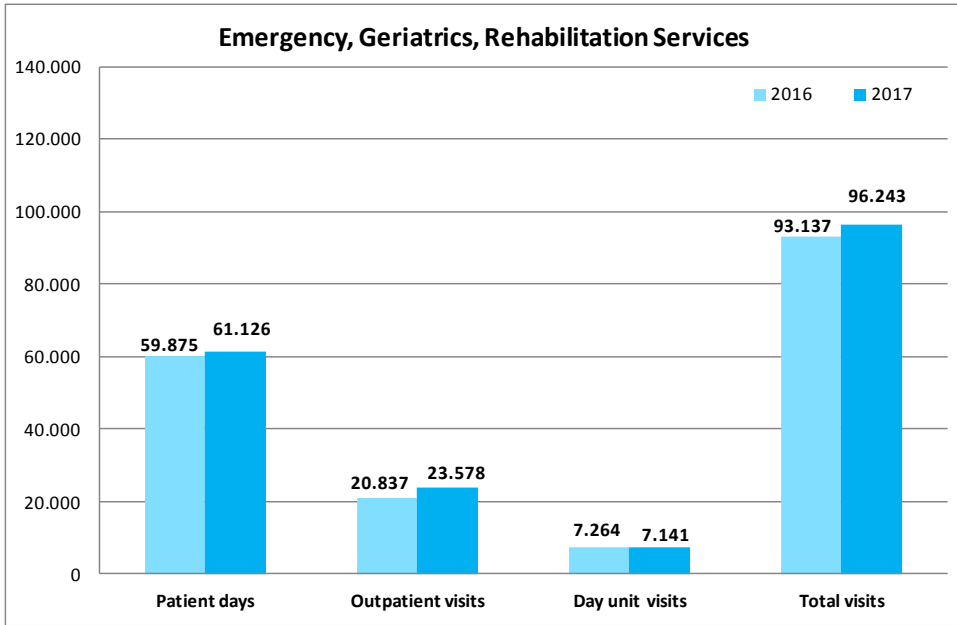
Key statistics for Landspítali

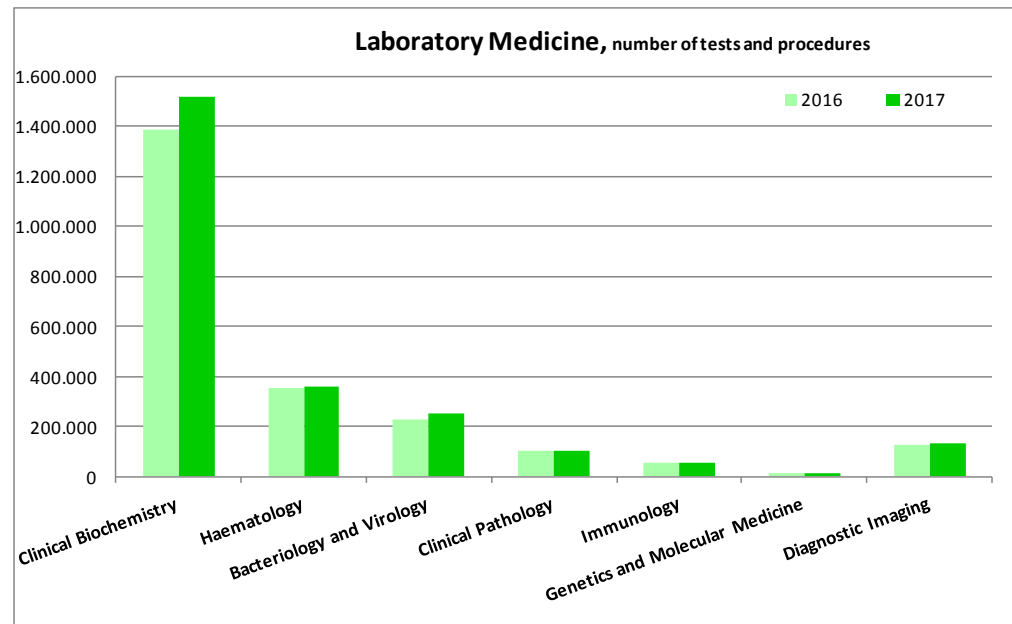
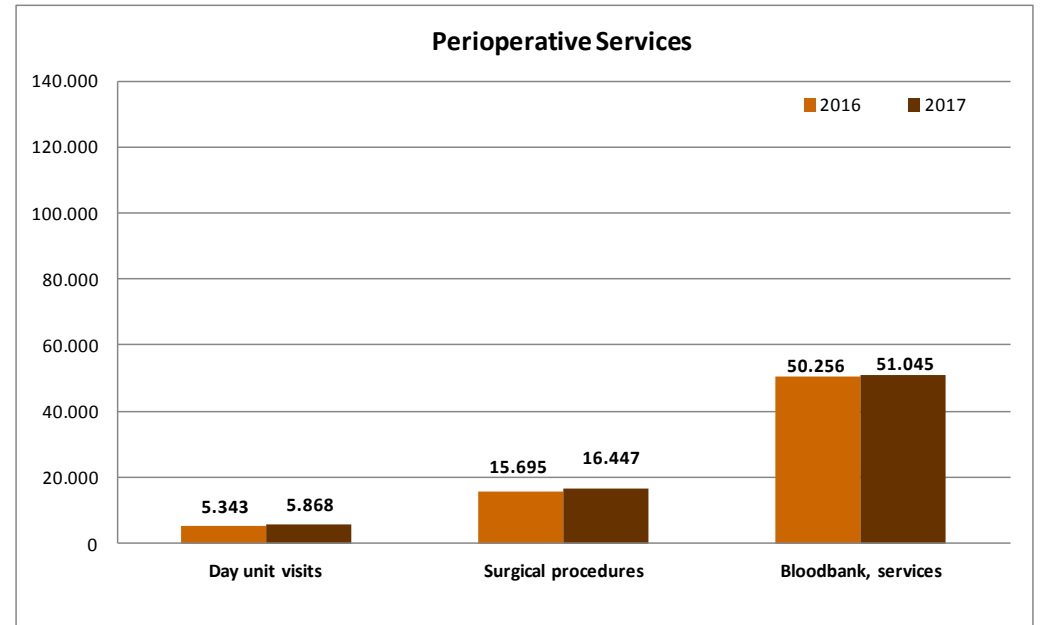
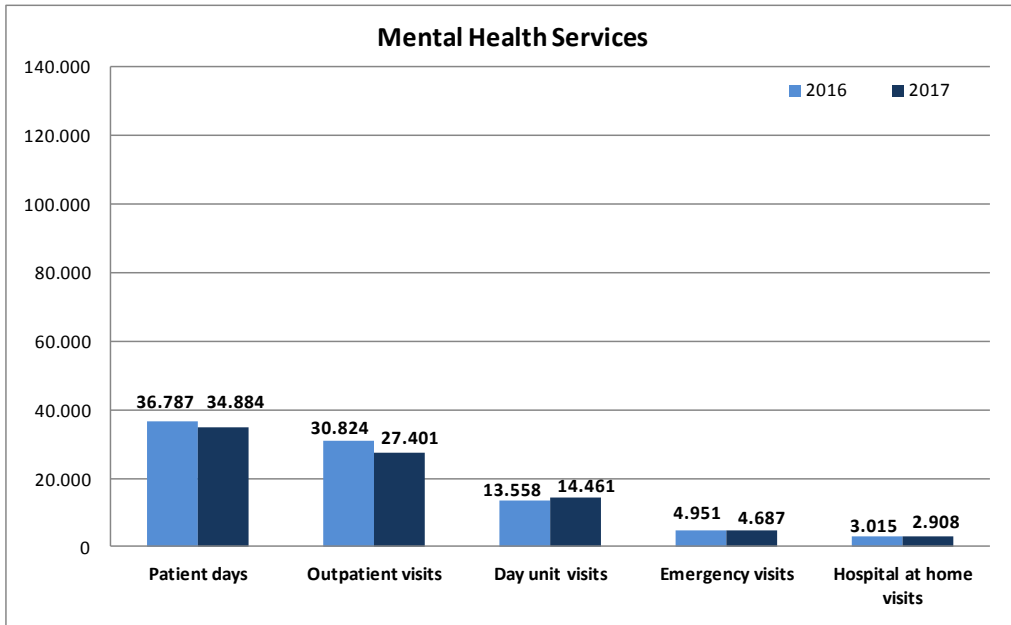
	2017	2016	2016-2015	Increase/ decrease
Number of individuals receiving hospital care ¹⁾	109.905	110.246	-341	-0,3%
Outpatient visits	244.222	241.283	2.939	1,2%
Day unit visits	88.586	84.072	4.514	5,4%
Emergency department visits	106.425	104.175	2.250	2,2%
Admissions	26.792	26.252	540	2,1%
Patient days	224.687	228.739	-4.052	-1,8%
Average length of stay (LOS), stays < 6 months	7,6	7,8	-0,2	-2,1%
Births	2.986	2.940	46	1,6%
Surgical procedures	16.447	15.695	752	4,8%
Diagnostic procedures	2.433.997	2.266.755	167.242	7,4%
Number of employees (January)	5.494	5.131	363	7,1%
Full-time equivalents (yearly average)	4.073	3.962	111	2,8%

¹⁾Each individual may have received care on more than one occasion, but is counted here only once.



Key figures, clinical divisions





Clinical services

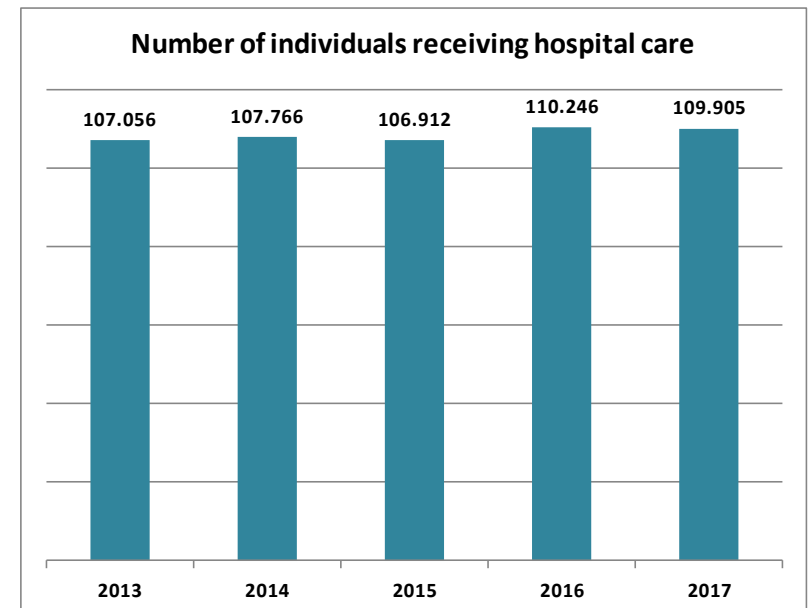
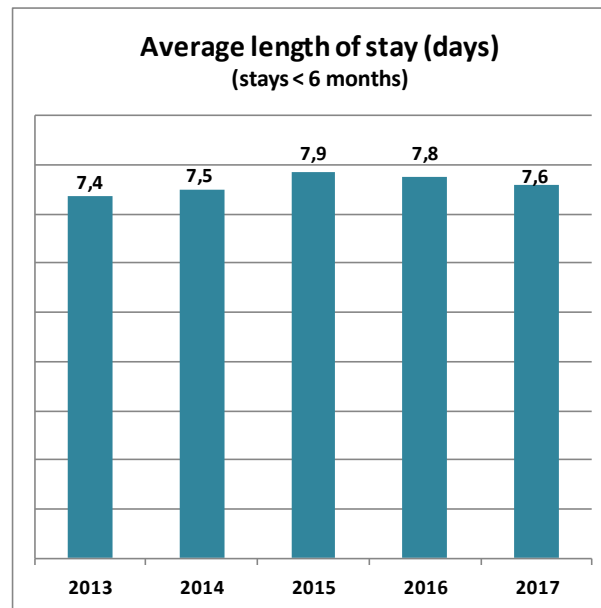
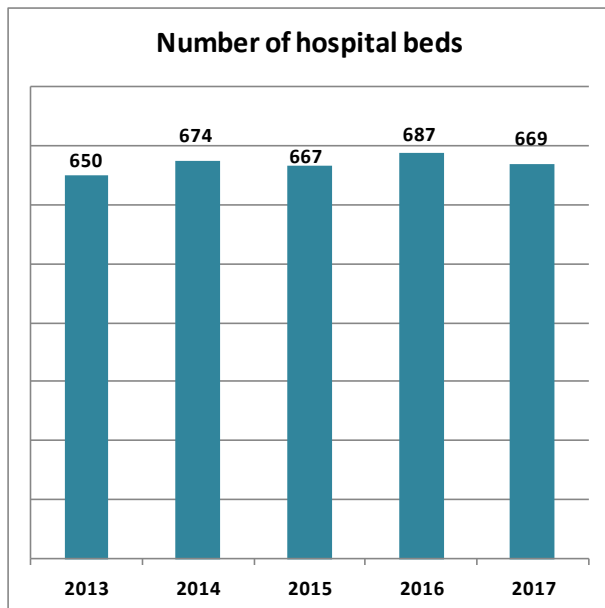
Inpatient Services

	Admissions		Increase/ decrease	Patient days		Increase/ decrease	Average length of stay		Increase/ decrease
	2017	2016		2017	2016		2017	2016	
Women and Children's Services	7.418	7.173	3,4%	25.513	24.603	3,7%	3,4	3,4	0,4%
Mental Health Services	2.296	2.169	5,9%	34.884	36.787	-5,2%	12,8	13,9	-7,5%
Internal Medicine Services	8.391	8.057	4,1%	69.552	71.278	-2,4%	8,4	8,9	-4,9%
Surgical Services	7.033	7.141	-1,5%	33.612	36.196	-7,1%	4,8	5,0	-4,8%
Emergency, geriatrics, rehabilitation services	1.654	1.712	-3,4%	61.126	59.875	2,1%	33,7	30,3	11,4%
Total	26.792	26.252	2,1%	224.687	228.739	-1,8%	7,6	7,8	-1,6%

Outpatient Services

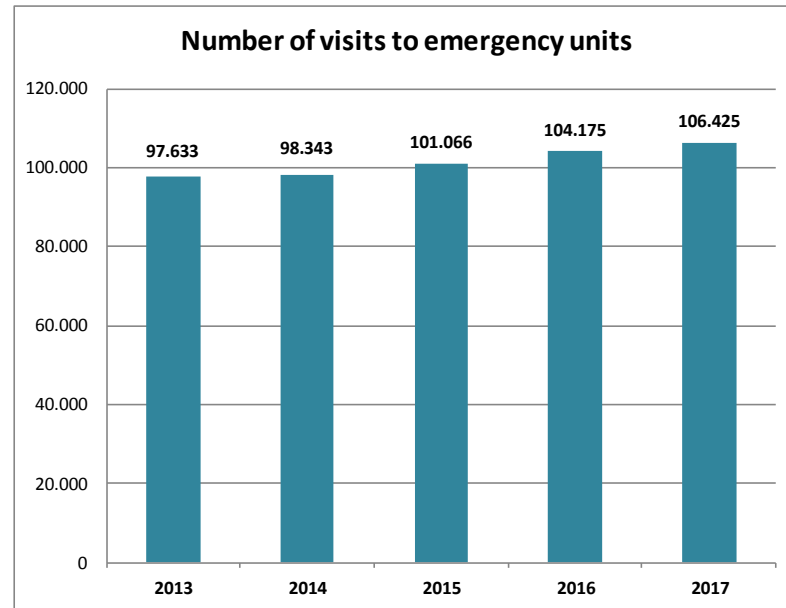
	Outpatient visits		Increase/ decrease	Day visits		Increase/ decrease
	2017	2016		2017	2016	
Women and Children's Services	38.932	40.814	-4,6%	6.404	6.375	0,5%
Mental Health Services	27.401	30.824	-11,1%	14.461	13.558	6,7%
Internal Medicine Services ¹⁾	106.648	104.122	2,4%	42.389	39.685	6,8%
Surgical Services	55.313	51.261	7,9%	17.788	16.803	5,9%
Perioperative Services ¹⁾	-	-	-	5.868	5.343	9,8%
Emergency, geriatrics, rehabilitation services	12.763	11.045	15,6%	7.141	7.264	-1,7%
Laboratory Medicine Services (Genetics and Molecular Medicine)	914	827	10,5%	0	0	-
Employee Health Care	2.251	2.390	-5,8%	0	0	-
Total	244.222	241.283	1,2%	88.183	83.685	5,4%

1) Gastroenterology is part of Internal Medicine, however the gastroscopic day service is part of Perioperative Services. It is therefore counted in both, but only once in the total number.



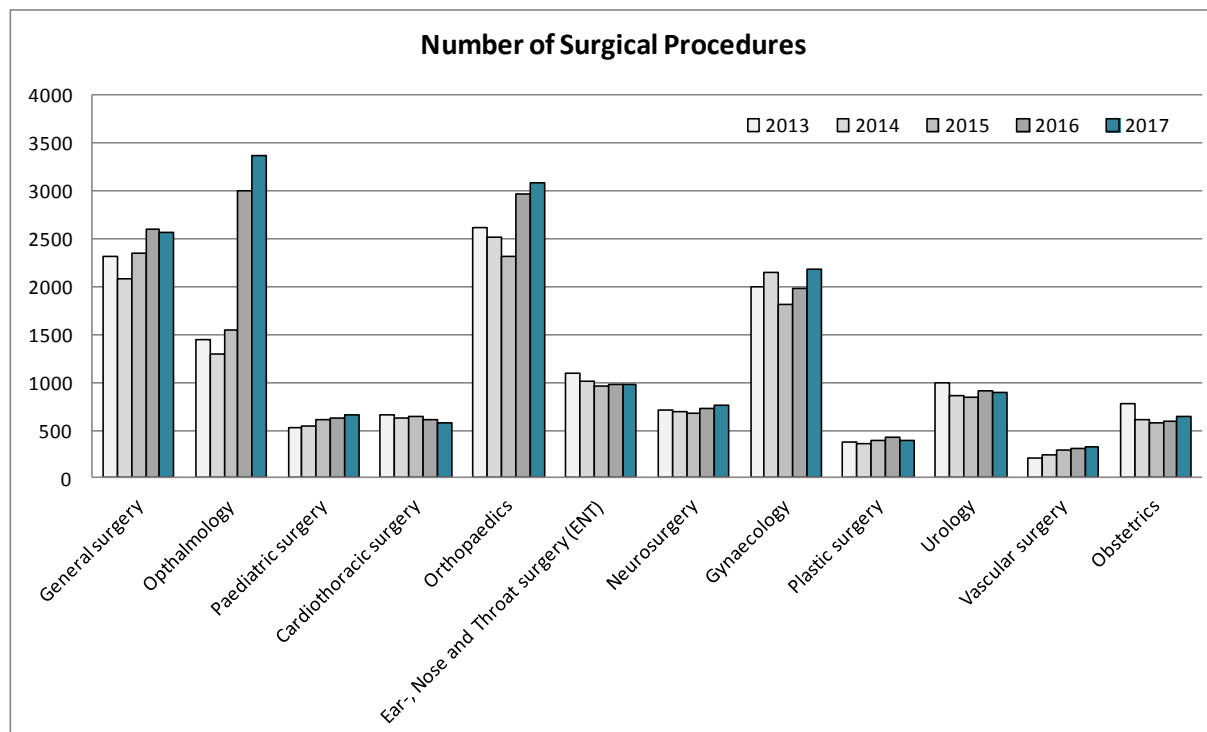
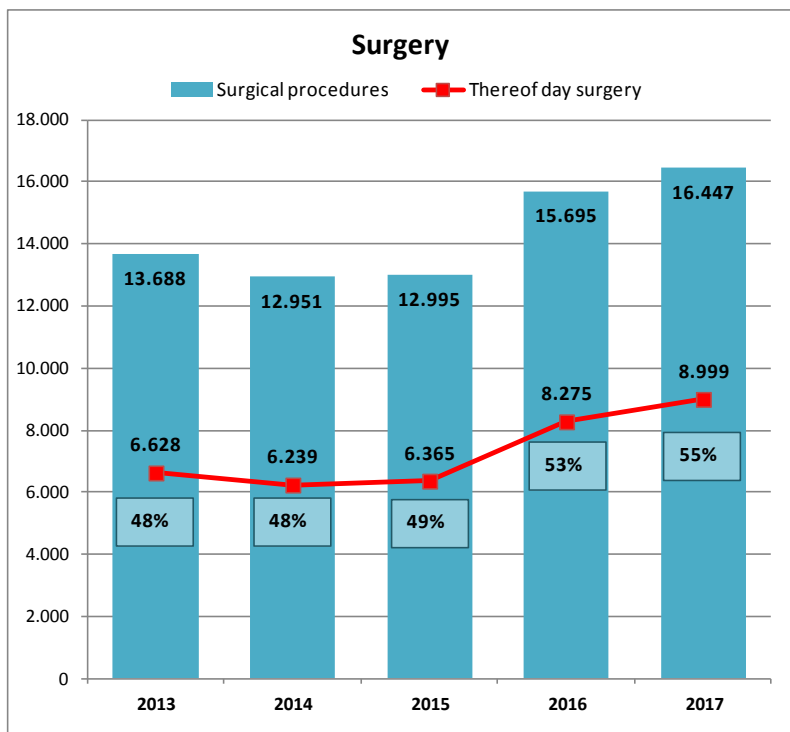
Emergency Visits

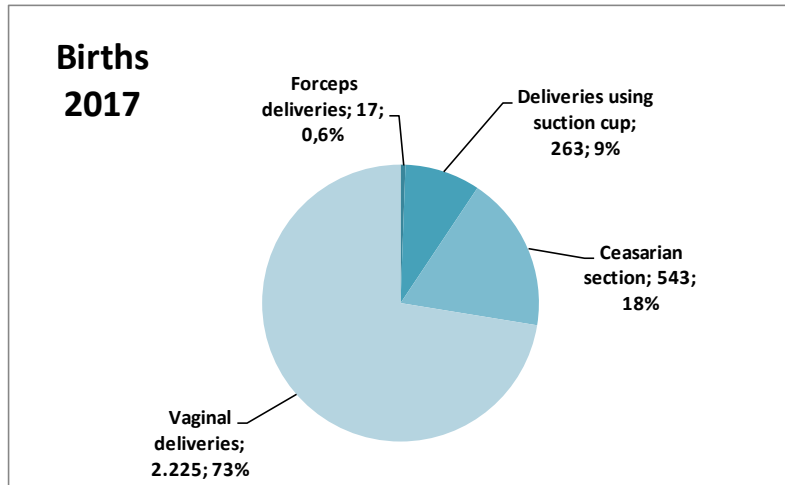
	Number of visits			Average number of visits per day		Admissions		Percentage admitted	
	2017	2016	Changes	2017	2016	2017	2016	2017	2016
	Women's Services	7.133	5.878	1.255	20	16	1.325	803	18,6%
Children's Services	13.442	14.018	-576	37	38	863	810	6,4%	5,8%
Mental Health Services	4.687	4.951	-264	13	14	1.067	896	22,8%	18,1%
Cardiac Emergency Unit	8.498	7.028	1.470	23	26	1.665	1.471	19,6%	20,9%
Emergency Unit in Fossvogur, thereof;	72.665	72.300	365	199	198	8.522	8.043	11,7%	11,1%
<i>high priority (G2)</i>	30.345	31.001	-656	83	85	7.647	7.255	25,2%	23,4%
<i>low priority (G3)</i>	42.320	41.299	1.021	116	113	875	788	2,1%	1,9%
Total emergency visits	106.425	104.175	2.250	292	291	13.442	12.023	12,6%	11,5%



Surgical Procedures

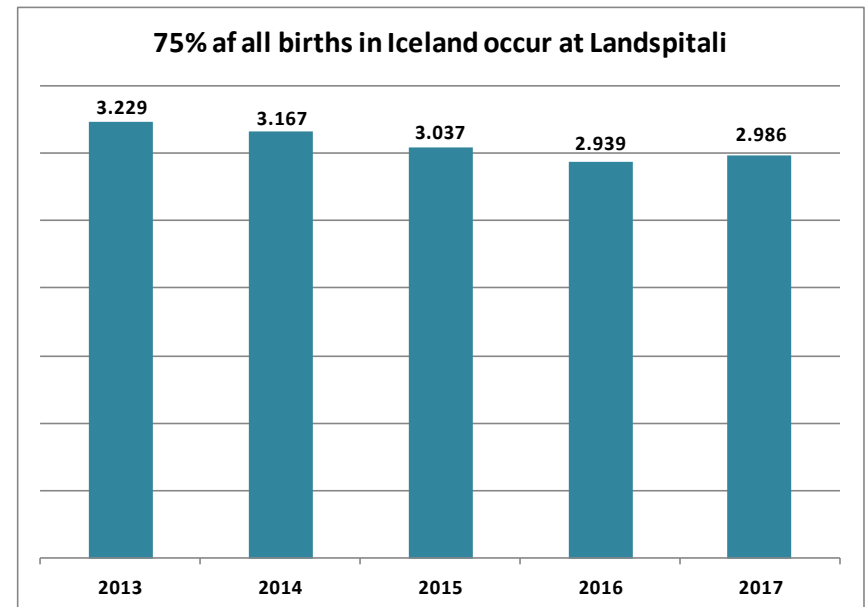
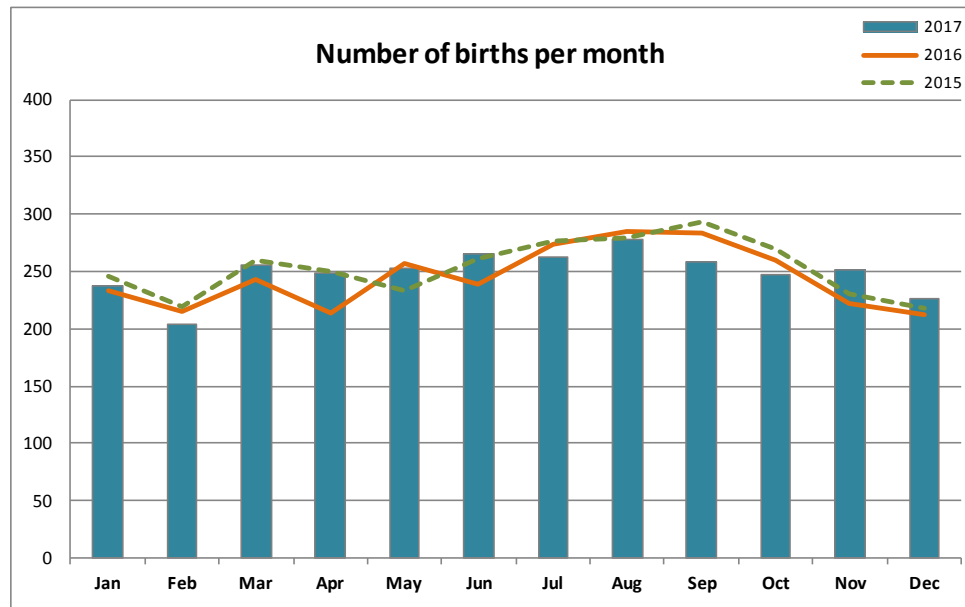
	Total		Increase/ decrease	Acute procedures		Day surgery	
	2017	2016		2017	Proportion	2017	Proportion
General surgery	2.564	2.598	-1,3%	987	38,5%	1.013	39,5%
Ophthalmology	3.364	2.999	12,2%	140	4,2%	3.254	96,7%
Paediatric surgery	662	608	8,9%	268	40,5%	304	45,9%
Cardiothoracic surgery	581	603	-3,6%	266	45,8%	65	11,2%
Orthopaedics	3.089	2.965	4,2%	1.486	48,1%	1.205	39,0%
Ear-, Nose and Throat surgery (ENT)	977	976	0,1%	156	16,0%	635	65,0%
Neurosurgery	765	725	5,5%	188	24,6%	373	48,8%
Gynaecology	2.181	1.981	10,1%	515	23,6%	1.273	58,4%
Plastic surgery	398	430	-7,4%	66	16,6%	153	38,4%
Urology	893	912	-2,1%	146	16,3%	617	69,1%
Vascular surgery	330	302	9,3%	135	40,9%	98	29,7%
Obstetrics	643	596	7,9%	410	63,8%	9	1,4%
Total	16.447	15.695	4,8%	4.763	29,0%	8.999	54,7%
Intraocular injections for treatment of age-related macular degeneration	581	603	-3,6%	0	0,0%	5.283	100,0%





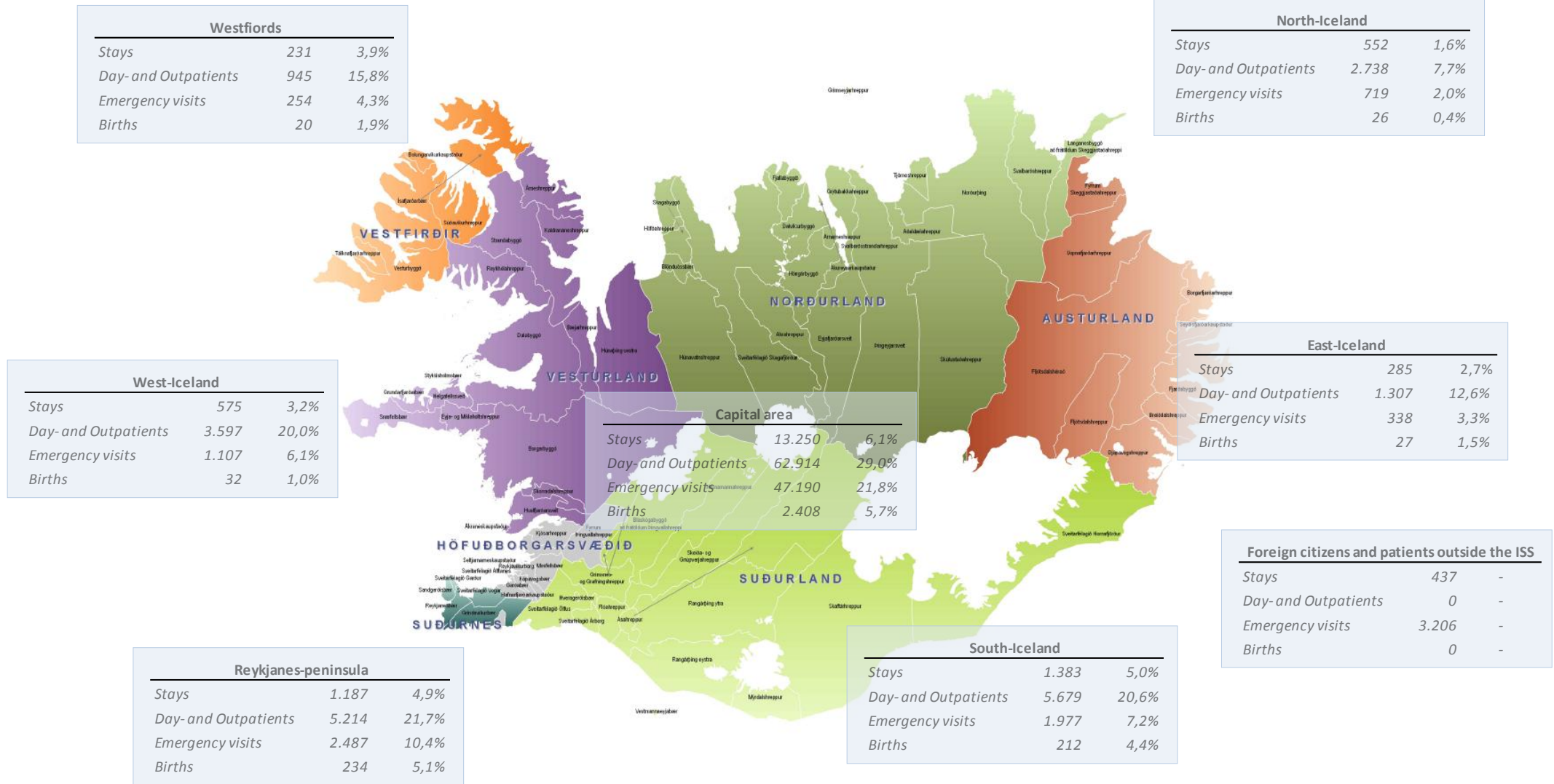
Births

	2017	2016	Increase/decrease
Number of births, thereof	2.986	2.939	1,6%
number of twins	47	63	-25,4%
number of triplets	1	2	-
proportion of all births in Iceland	74,4%	74,1%	0,5%
Number of babies	3.035	3.006	1,0%
Multiple births	1,6%	2,2%	-
Caesarean section rate	18,2%	18,3%	-



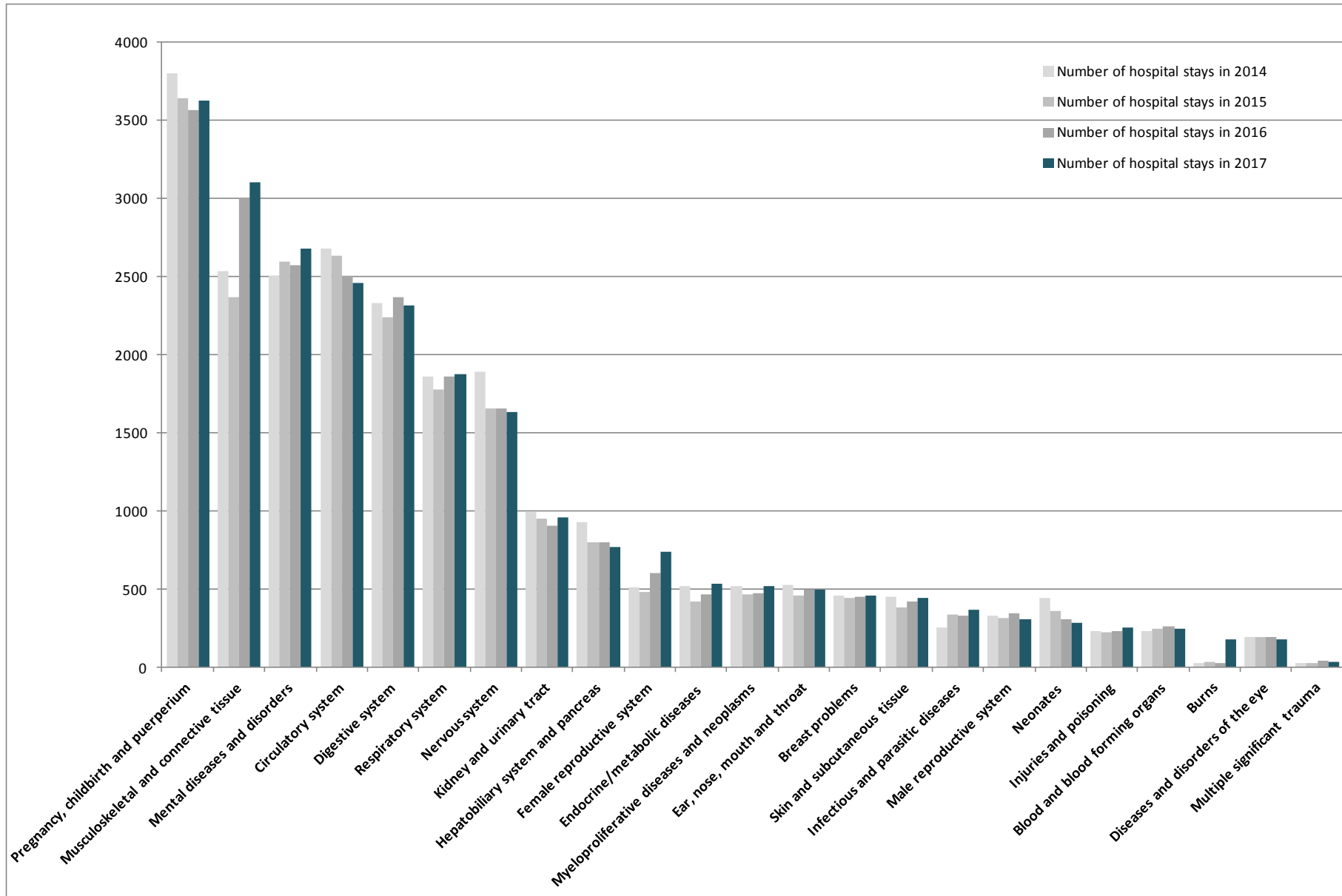
Our patients come from all parts of Iceland

Patients seeking health care services at Landspítali come from all health districts in the country. The first column shows the number of patients, the second column shows the percentage of inhabitants in each area that had at least one contact with Landspítali in 2017. Percentage of births is calculated from the number of women at the age of 18 to 45 living in the area.

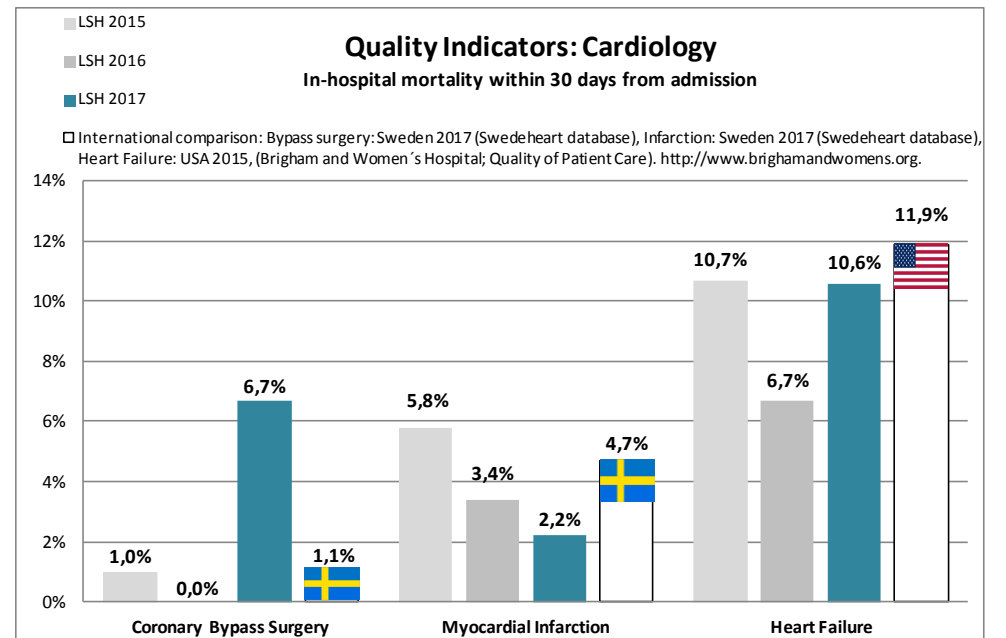
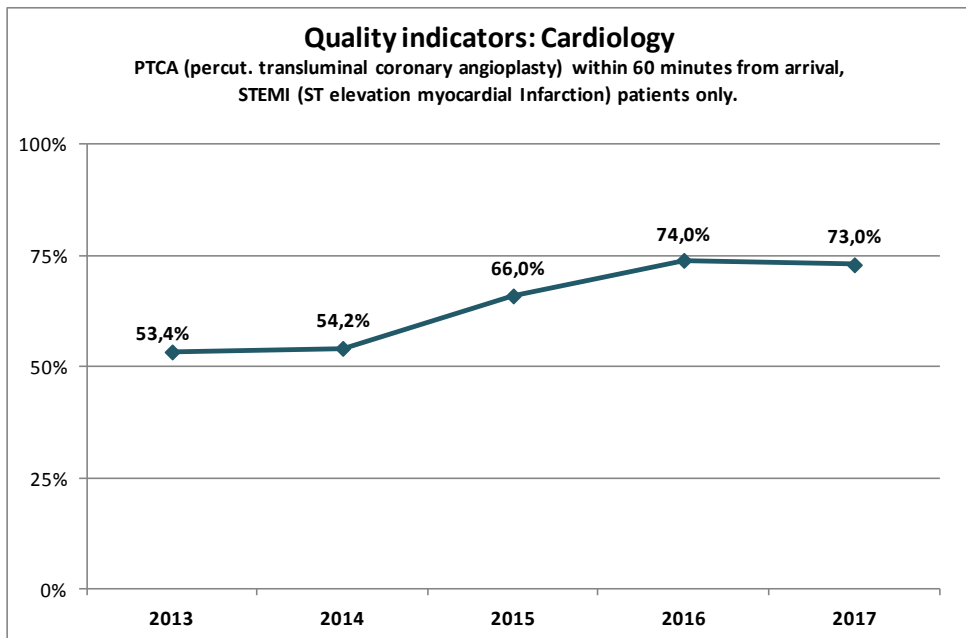
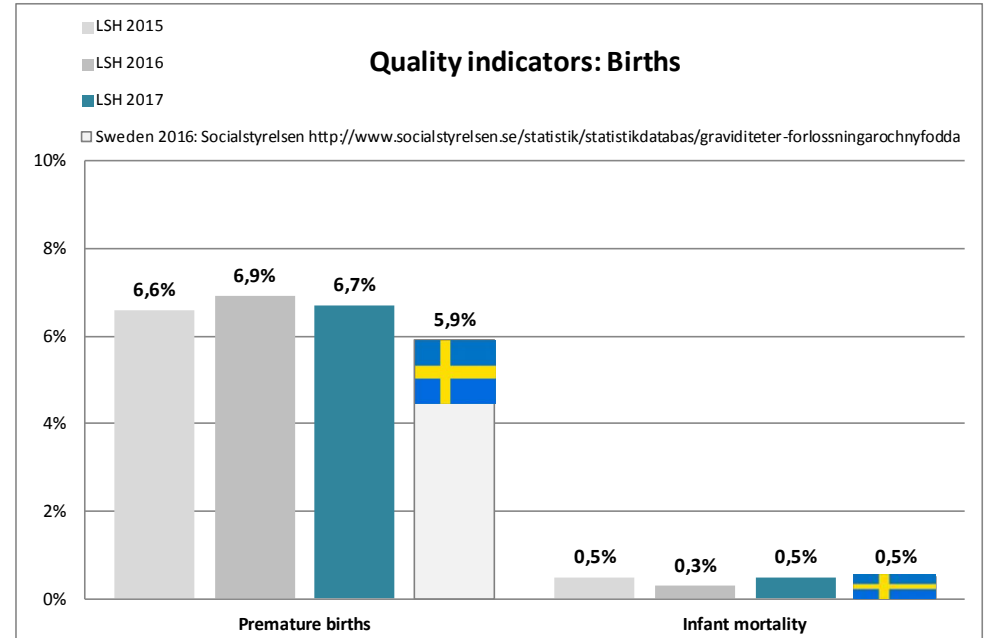
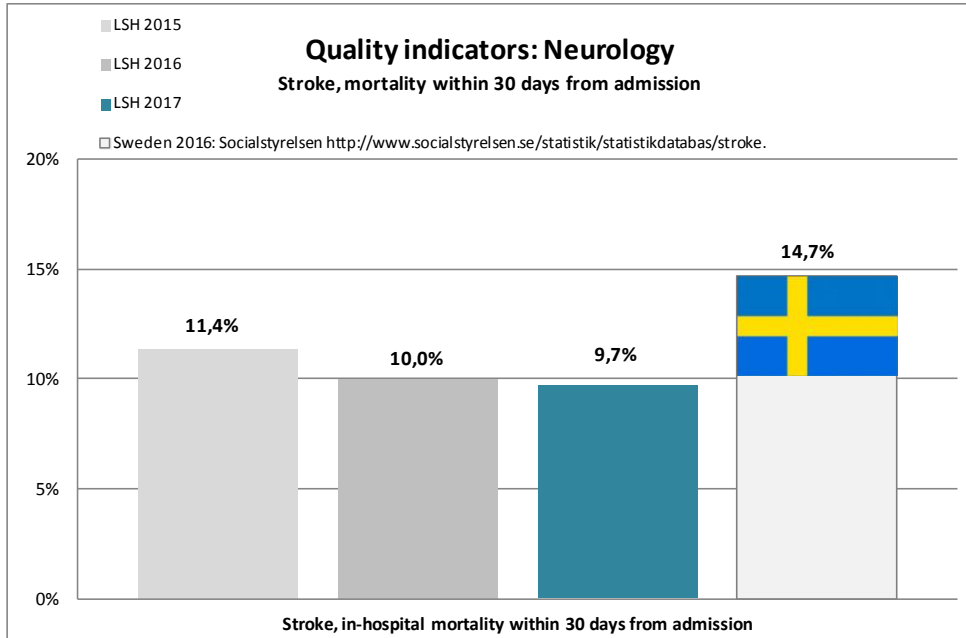


Inpatients; Main Diagnostic Categories (MDC) of the Diagnosis Related Groups (DRG) system

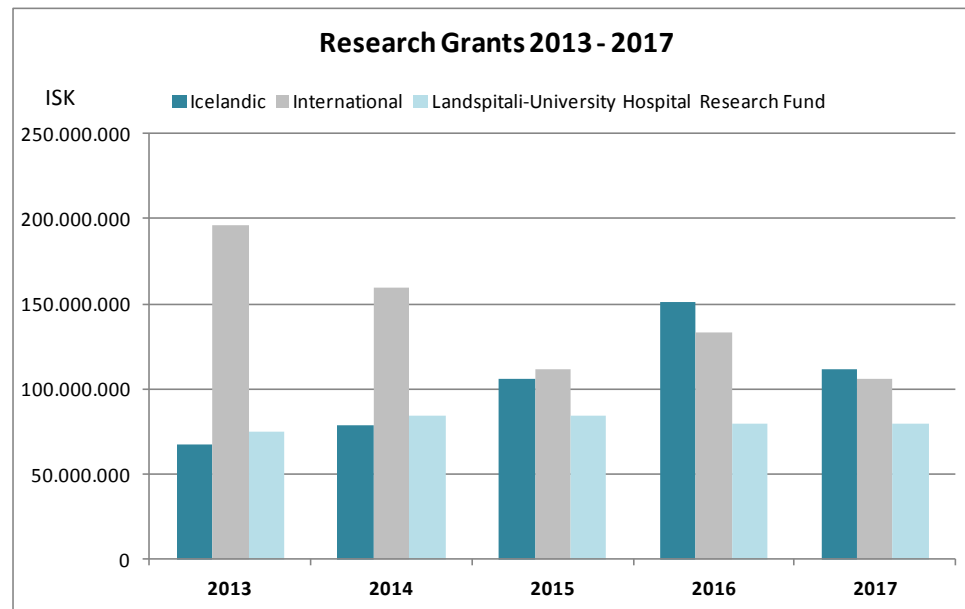
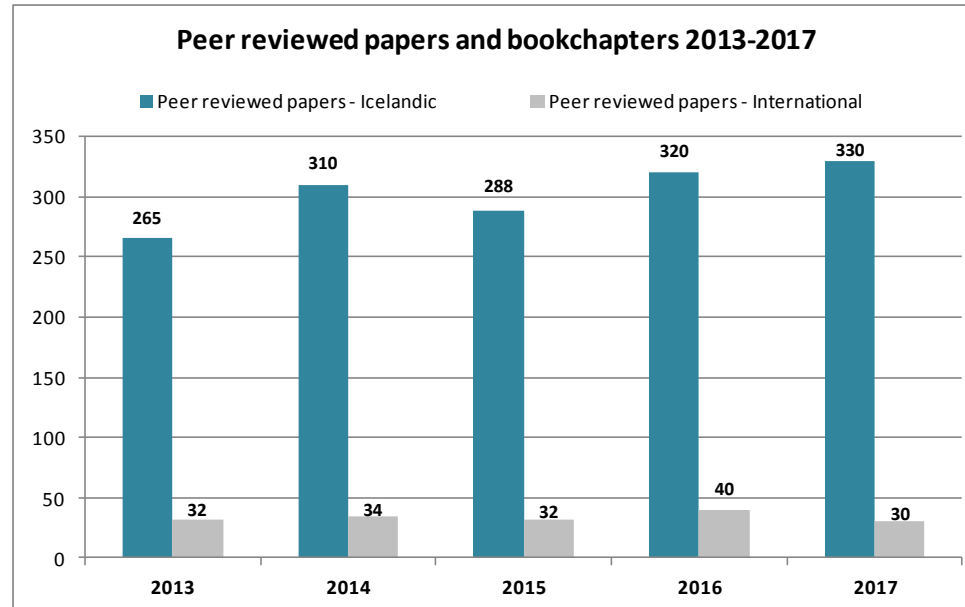
Number of inpatient stays 2014-2017



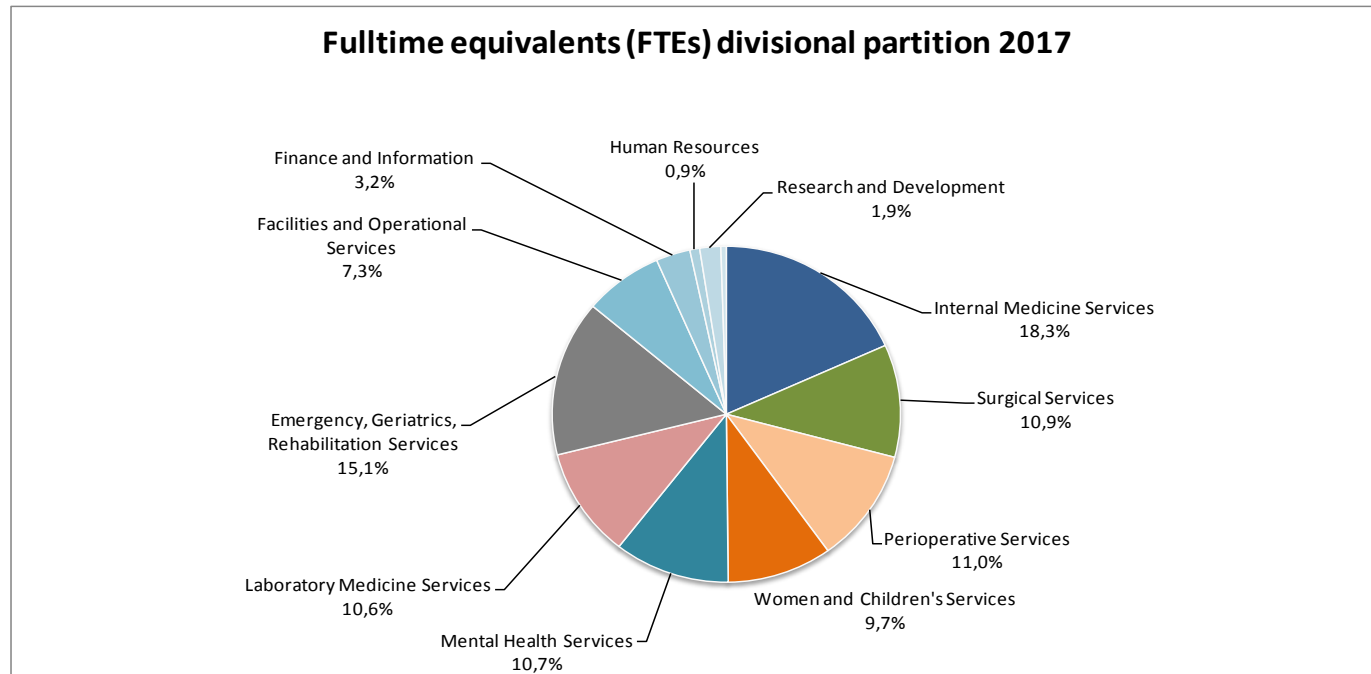
Quality indicators, examples



Academic research in university hospitals - foundation for quality care



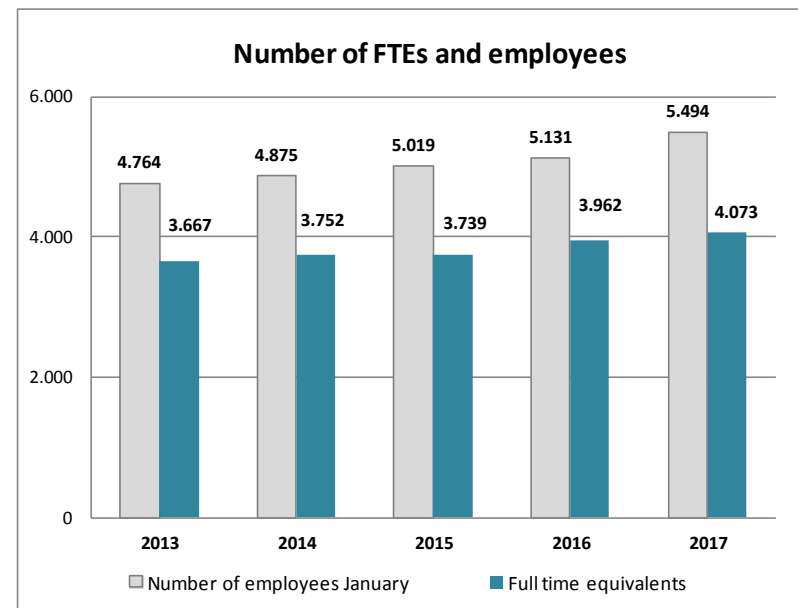
Human resources



Full-time equivalents (FTEs)

	Full-time equivalents (FTEs)	
	2017	2016
Internal Medicine Services,	744,0	720,4
Surgical Services	443,4	442,5
Perioperative Services	447,0	438,1
Women and Children's Services ¹⁾	395,2	384,2
Mental Health Services	436,0	440,9
Laboratory Medicine Services	430,0	415,9
Emergency, Geriatrics, Rehabilitation Services	613,0	588,4
Facilities and Operational Services	299,0	294,0
Finance and Information	129,0	121,6
Human Resources	37,0	32,6
Office of the Chief Medical Executive and the Office of the Chief Nursing Executive	79,0	63,4
Office of the Chief Executive	20,5	19,6
Total	4.073,1	3.961,5

1) Includes IT department



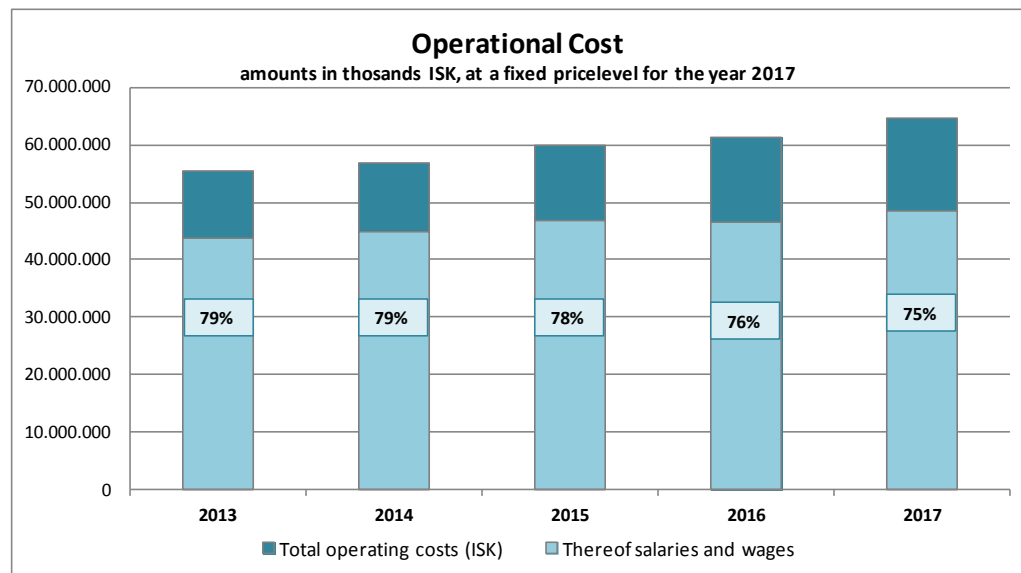
Financial accounts

Financial Accounts

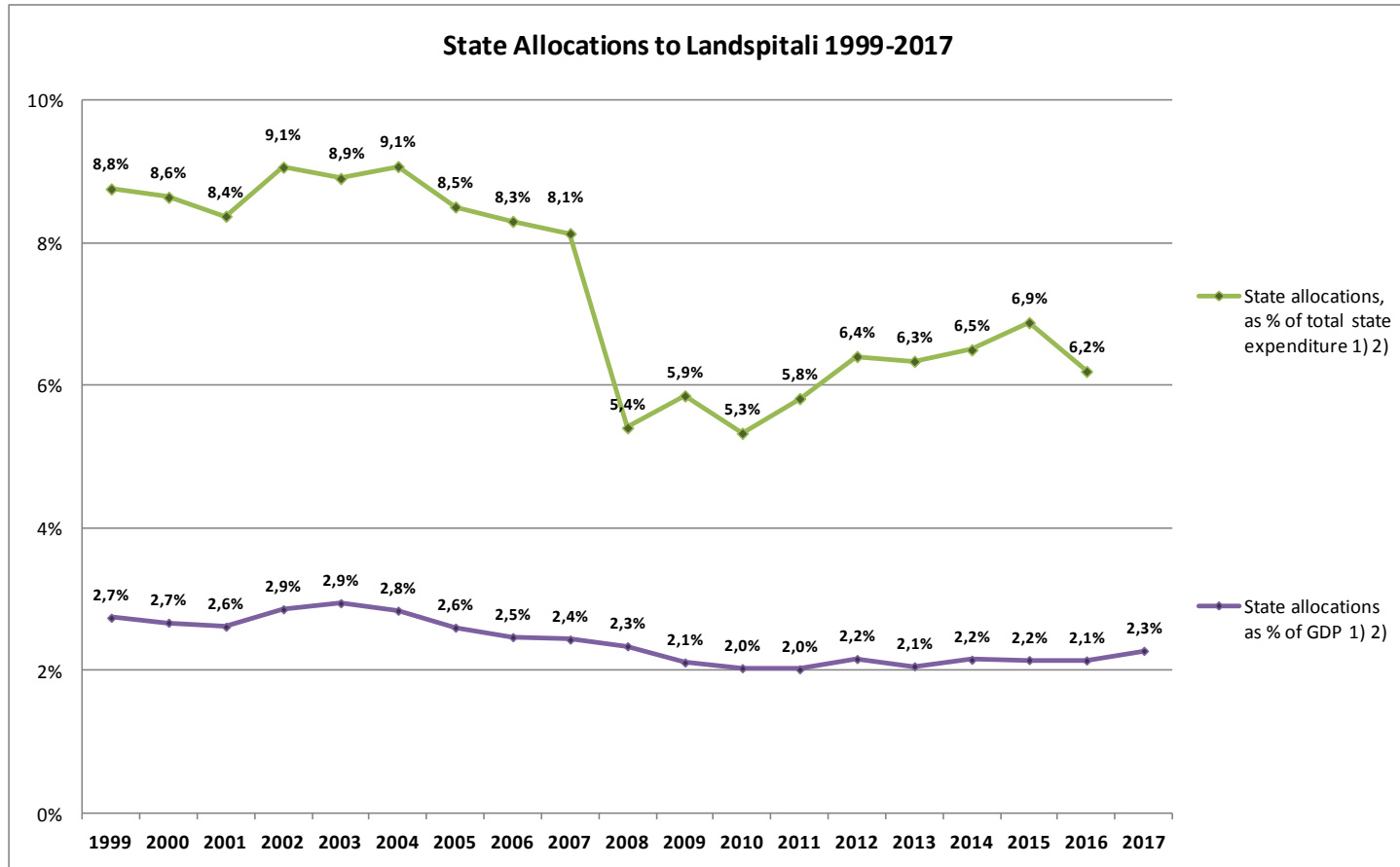
	2017	2016	2015
Revenues			
Allotment in State Budget	56.127,1	52.625,8	48.071,2
Revenues from patient care and other operations	8.332,3	8.119,3	6.563,0
Income from Icelandic Health Insurance for S-labelled medications ¹⁾	2.894,8	2.941,2	3.359,6
Provision for depreciation	759,0		
Total Revenues	68.113,2	63.686,3	57.993,9
Expenses			
Wages and salaries	48.415,0	43.552,4	38.644,8
Other operating expenses	16.169,5	15.003,1	13.639,4
"S-labelled" medications ¹⁾	2.728,8	2.788,9	3.291,1
Depreciation	784,9	2.505,8	2.413,6
Total Expenses	68.098,2	63.850,1	57.988,9
Revenues above Expenses			
Revenues above Expenses/(Expenses above Revenues)	14,9	(163,8)	4,9
Other Revenues			
Financial revenues and (expenses)	47,2	78,8	50,7
Total Revenues above Expenses/(Expenses above Revenues)	62,2	(85,0)	55,7

Amounts in ISK millions

¹⁾ "S-labelled" medications are those intended only for hospital use and are specially provided for in the State Budget.



State Allocations to Landspítali



1) According to State Budget

2) In the State Budget 2009 allocations for S-labelled medications were transferred from Landspítali to the Icelandic Health Insurance Agency. (S-labelled medications are those intended solely for use in hospitals.)

Five year statistical overview

Five years statistical overview ¹⁾

Fem års statistisk oversigt ¹⁾

	2017	2016	2015	2014	2013	
Population development in the capital area ²⁾						Udvikling af befolkningen i hovedstadsområdet ²⁾
Number of inhabitants	216.878	213.619	211.282	208.752	205.675	Befolkning
Annual increase	1,53%	1,11%	1,21%	1,50%	1,02%	Årlig vækst
Number of inhabitants age 70 years and older	19.748	19.183	18.582	18.021	17.556	Antal beboere 70 år og ældre
Proportion of inhabitants age 70 years and older	9,11%	8,98%	8,79%	8,63%	8,54%	Procent beboere 70 år og ældre
Number of inhabitants age 80 years and older	7.768	7.684	7.584	7.425	7.320	Antal beboere 80 år og ældre
Proportion of inhabitants age 80 years and older	3,58%	3,60%	3,59%	3,56%	3,56%	Procent beboere 80 år og ældre
Key operational statistics ³⁾						Nøgletal for hospitalet ³⁾
Total operational costs (ISK) ⁴⁾	64.582.193	61.218.144	59.986.585	56.826.238	55.325.861	Samlede udgifter ⁴⁾
Salaries	75%	76%	78%	79%	79%	Udgifter til personale
Number of individuals receiving hospital care	109.905	110.246	106.912	107.766	107.056	Antal personer som fik tjeneste fra hospitalet
Emergency units, visits	106.425	104.175	101.066	98.343	97.633	Skadestue, antal besøg
Outpatient units visits, thereof <i>dayward units, visits ¹⁾</i>	332.808 88.586	325.355 84.072	301.576 75.088	310.160 83.639	314.644 77.811	Ambulante besøg, deraf <i>dagpatienter, antal besøg ¹⁾</i>
Patient days ¹⁾	224.687	228.739	224.117	219.981	215.357	Antal sengedage ¹⁾
Admissions ¹⁾	26.792	26.252	25.227	26.227	26.753	Antal indlæggelser ¹⁾
Average length of stay, thereof <i>stays < 6 months</i>	8,7 7,6	8,8 7,8	8,9 7,9	8,3 7,5	8,6 7,3	Gennemsnitlig liggetid, deraf <i>liggetid < 6 måneder</i>
DRG casemix index, inpatients ⁵⁾	1,14	1,13	1,12	1,12	1,14	Gennemsnitlig DRG-vægt af indlagte patienter ⁵⁾
Total DRG units ⁵⁾	45.558	44.306	42.158	43.118	44.728	Samlede DRG enheder ⁵⁾
Hospital beds	669	687	667	674	650	Antal senge
Surgical procedures ¹⁾ , thereof <i>same day surgery</i>	16.447 8.999	15.695 8.275	12.995 6.365	12.951 6.239	13.688 6.628	Kirurgiske behandlinger ¹⁾ , deraf <i>dagskirurgi</i>
Number of births	2.986	2.939	3.037	3.133	3.229	Antal fødsler
Diagnostic services, thereof <i>Diagnostic imaging</i>	2.433.997 132.632	2.266.755 127.913	1.906.030 113.072	1.967.654 118.568	1.921.338 116.600	Diagnostiske undersøgelser, deraf <i>antal radiologiske undersøgelser</i>
Staffing, full time equivalents	4.073	3.962	3.739	3.752	3.667	Antal ansatte/årsværk
Number of employees	5.494	5.131	5.019	4.875	4.764	Antal ansatte personer
Staff turnover	15,1%	13,6%	13,4%	11,0%	11,1%	Personale omsætning

1) Figures in 2015 are affected by strikes. Tallene i 2015 er påvirket af strejker.

2) Data from Statistics Iceland. Data fra Islands Statistik.

3) Data from hospital annual reports. Data fra hospitalets årsberetning.

4) Numbers in thousands (ISK), at fixed price level for the year 2017. Tal i tusind (ISK), ved fast pris for året 2017.

5) Total DRG units based on 2017 DRG weights. Without newborns, rehabilitation and patient hotel. Samlede DRG enheder baseres på 2017 DRG vægt. Uden nyfødte, rehabilitering og patienthotel.

	2017	2016	2015	2014	2013	
Average exchange rate USD to ISK	106,78	120,67	131,85	116,75	122,23	Gennemsnitlig valutakurs USD til ISK
Average exchange rate EUR to ISK	120,54	133,59	146,30	154,86	162,38	Gennemsnitlig valutakurs EUR til ISK

Updated/Opdateret May / maj 2018